

FOR SALE

OIEO £700,000

Birkbeck Road, Beckenham, BR3



Grafton Estate Agents are delighted to offer this lovely Victorian three bedroom mid terraced house situated on a popular residential road and surrounded by excellent transport links, schools and many other local amenities.



A well presented and positioned family home offering two double bedrooms with built in wardrobes, one single bedroom and spacious family bathroom with separate bath and walk-in shower on the first floor, while downstairs comprises of a large double reception room with two fireplaces and built in storage, side extension creating an additional room which can be used as an office or fourth bedroom and extra storage, recently installed contemporary fitted kitchen with dining area and doors leading to a Southerly facing garden with patio area and steps leading to a raised garden with a large shed.

This Victorian home with its period features also benefits from gas central heating, double glazing, off street parking and is situated within easy reach of both Clock House and Kent House railway stations and Tram link offering a frequent service into Central London. Viewings are recommended at your earliest convenience to fully appreciate the size, charm and condition of this wonderful family home.

- Mid Terrace Victorian House
- Three Bedrooms
- Double Reception
- Eat in Kitchen
- Off Street Parking
- South East Facing Garden
- Side Extension
- EPC Rating D



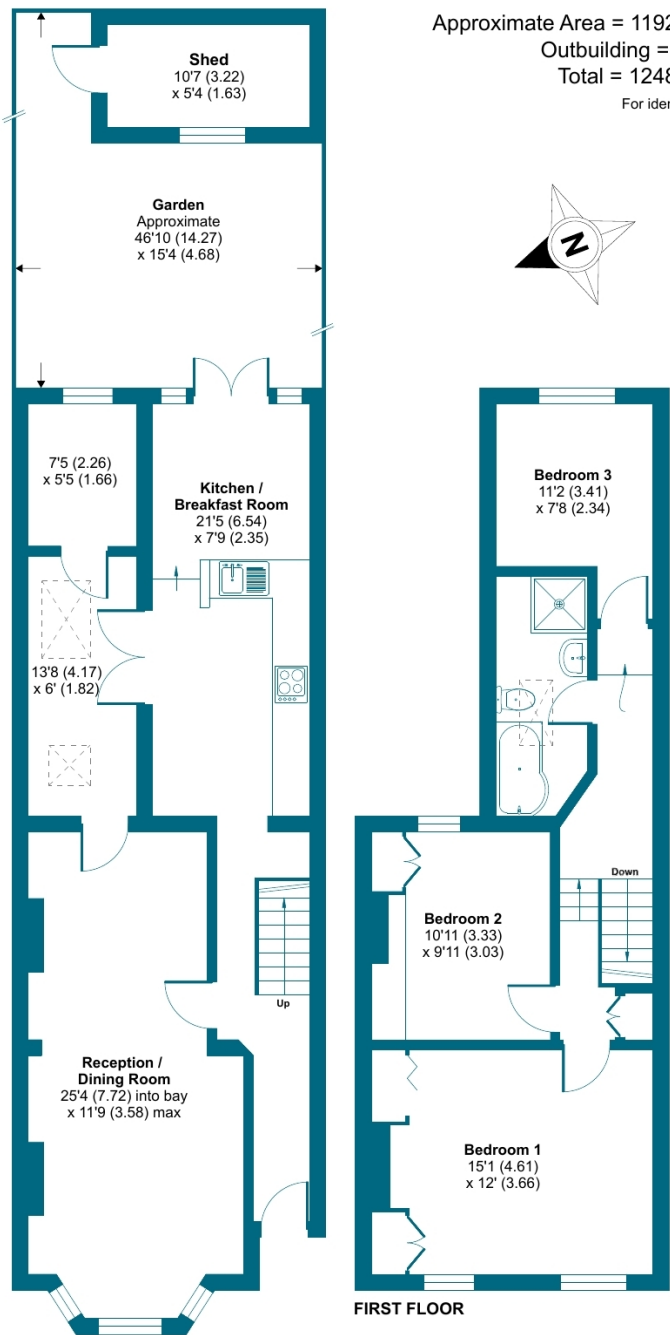






Birkbeck Road, Beckenham, BR3

Approximate Area = 1192 sq ft / 110.7 sq m  
Outbuilding = 56 sq ft / 5.2 sq m  
Total = 1248 sq ft / 115.9 sq m  
For identification only - Not to scale



GROUND FLOOR

Floor plan produced in accordance with RICS Property Measurement 2nd Edition, Incorporating International Property Measurement Standards (IPMS2 Residential). © nitchecom 2025. Produced for Grafton Estate Agents. REF: 1300886

