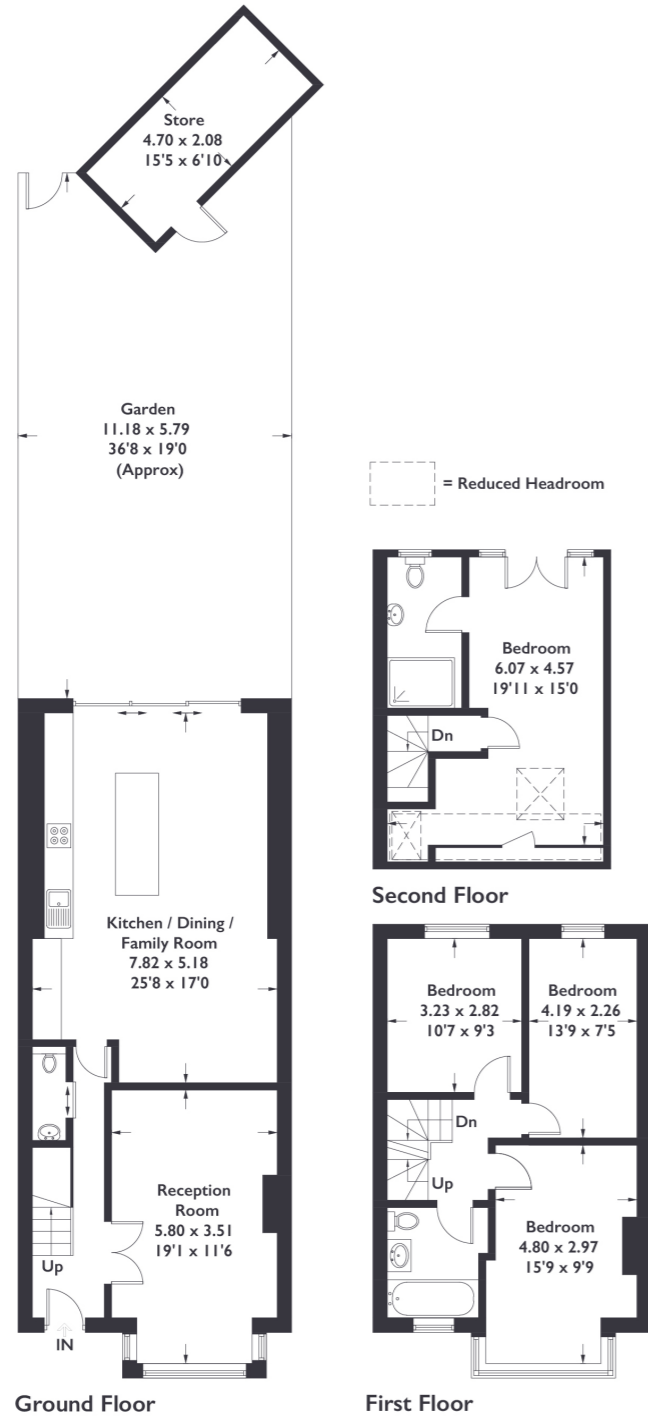


Dudley Gardens, W13

Approximate Gross Internal Area = 141.3 sq m / 1522 sq ft

Store = 9.8 sq m / 106 sq ft

Total = 151.1 sq m / 1628 sq ft



4 BEDROOM HOUSE

Dudley Gardens, W13

£1,200,000

Conveniently located within the heart of Northfields, this Edwardian style property offers expansive living spaces, stunning designs and spans over 1600 sq ft.

FEATURES

- Four Double Bedrooms
- Terraced Edwardian house
- Extended Into The Loft And Rear
- Well Maintained Rear Garden
- Integrated Kitchen Appliances
- Built In Storage Throughout
- Fielding Primary School Nearby
- Northfields Station Moments Away
- West Ealing Station Nearby

Measured in accordance with RICS Code of Measuring Practice. To be used for identification and guidance purposes only. Whilst every care is taken in the preparation of this plan, please check all dimensions, shapes and compass bearings before making any decisions reliant upon them.



4 BEDROOM HOUSE

Dudley Gardens, W13

£1,200,000

A generously sized hallway welcomes you into the property.

The front reception room is filled with natural light with the addition of a period fireplace and large bay window. Leading through, the kitchen has been tastefully extended and boasts a large dining area, integrated appliances and ample amount of storage space that has been cleverly compartmentalised. With the addition of a skylight and stylish sliding doors, the garden is well-maintained with rear access and shed space. Under stair storage and a modern WC complete the ground floor. The first floor offers a bright principle bedroom to the front, with a further two double bedrooms and a family bathroom. The loft has been extended to accommodate a large double bedroom with en-suite. Additional storage space, access to eaves storage and a beautiful juliet balcony complete this floor.

You are a short walk away from all of the amenities Northfield Avenue has to offer. The Ofsted Outstanding Fielding Primary School makes this location ideal for families with Northfields station (Piccadilly Line) and West Ealing Station (new Elizabeth Line) allowing you to be only a short trip away from central London.

