



62 Stainash Crescent, Staines-upon-Thames, Surrey. TW18 1AY.
3 Bedroom Terraced House - £460,000 Freehold

62 Stainash Crescent, Staines-upon-Thames, Surrey. TW18 1AY.

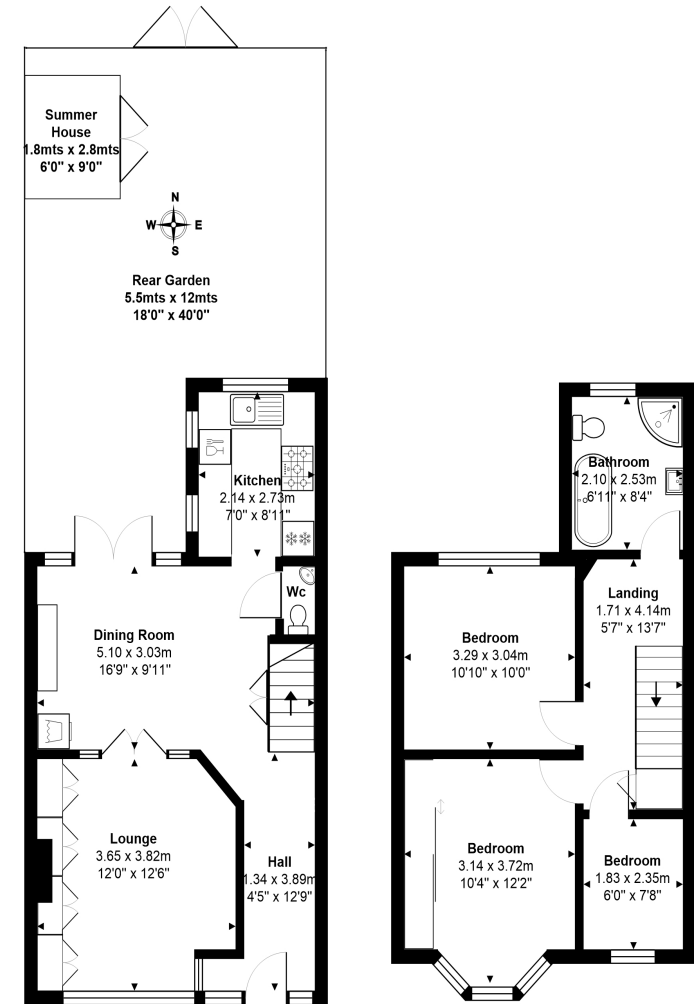
01784 451458

3 Bedroom Terraced House - £460,000 Freehold

STUNNING THREE BEDROOM PROPERTY SITUATED ALONG THIS HUGELY POPULAR CRESCENT IDEALLY LOCATED FOR STAINES TOWN CENTRE, LOCAL SHOPS & MAINLINE TRAIN STATION. The property benefits from a spacious lounge, modern kitchen/diner, downstairs W.C., three well-proportioned bedrooms, modern white four-piece bathroom suite and a large secluded rear garden with timber summerhouse. Viewings Highly Recommended!

Key Features

STUNNING CONDITION
IDEALLY LOCATED FOR HIGH STREET & MAINLINE TRAIN STATION
CLOSE TO LOCAL SHOPS & SCHOOLS
MODERN KITCHEN & BATHROOM
DOWNSTAIRS W.C.



Ground Floor

First Floor

Total Area: 81.1 m² ... 873 ft²
All measurements are approximate and for display purposes only.



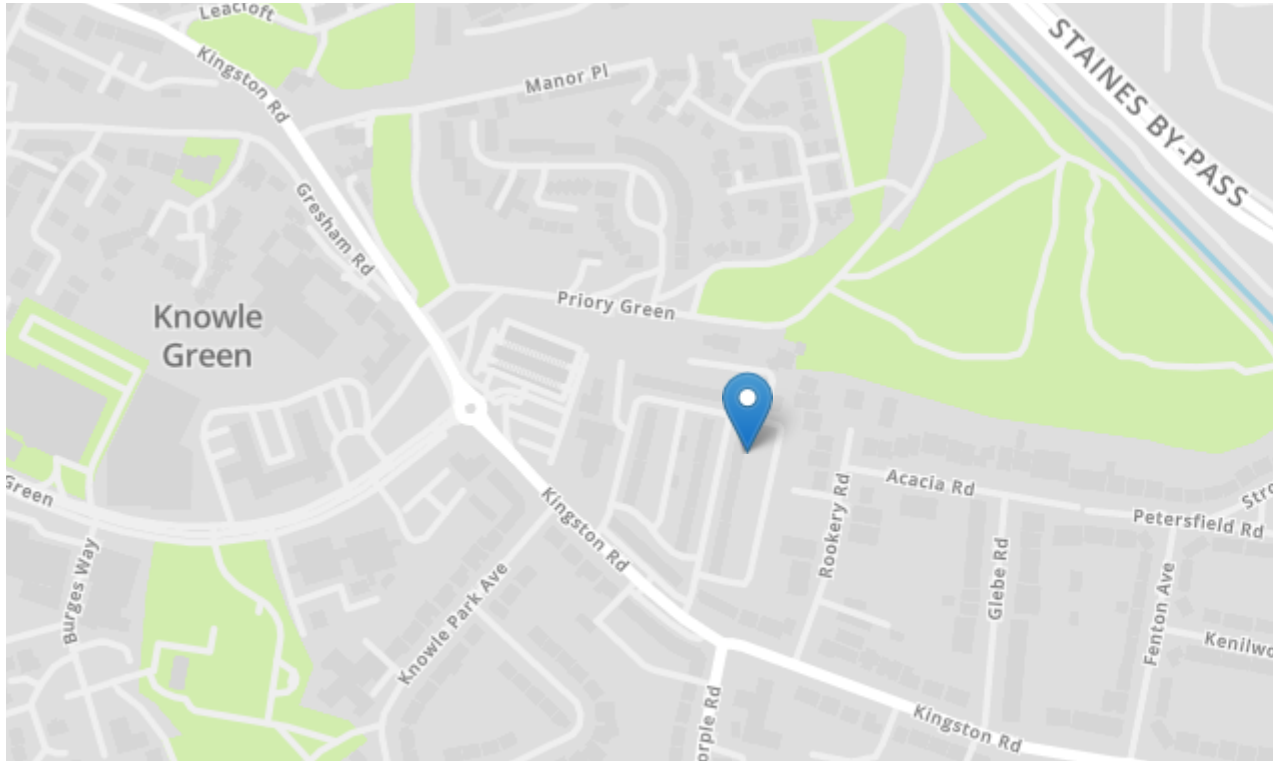
GREGORY BROWN
RESIDENTIAL SALES & LETTINGS





62 Stainash Crescent, Staines-upon-Thames, Surrey. TW18 1AY.

gregory-brown.co.uk



Tenure **Freehold**

Lease Term

Ground Rent

Service Charge

Local Authority

Council Tax

We have prepared these property particulars as a general guide to a broad description of the property. They are not intended to constitute part of an offer or contract. We have not carried out a structural survey and the services, appliances and specific fittings have not been tested. All photographs, measurements, floorplans and distances referred to are given as a guide only and should not be relied upon for the purchase of carpets or any other fixtures or fittings. Lease details, service charges and ground rents (where applicable) and council tax are given as a guide only and should be checked and confirmed by your solicitor prior to exchange of contracts. The copyright of all details, photographs and floorplans remain exclusive to Gregory Brown.

