



BarrettMove



**10 Cherry Corner, Flackwell Heath, Bucks HP10 9PA
Offers in Excess Of £300,000 - Leasehold**



PROPERTY SUMMARY

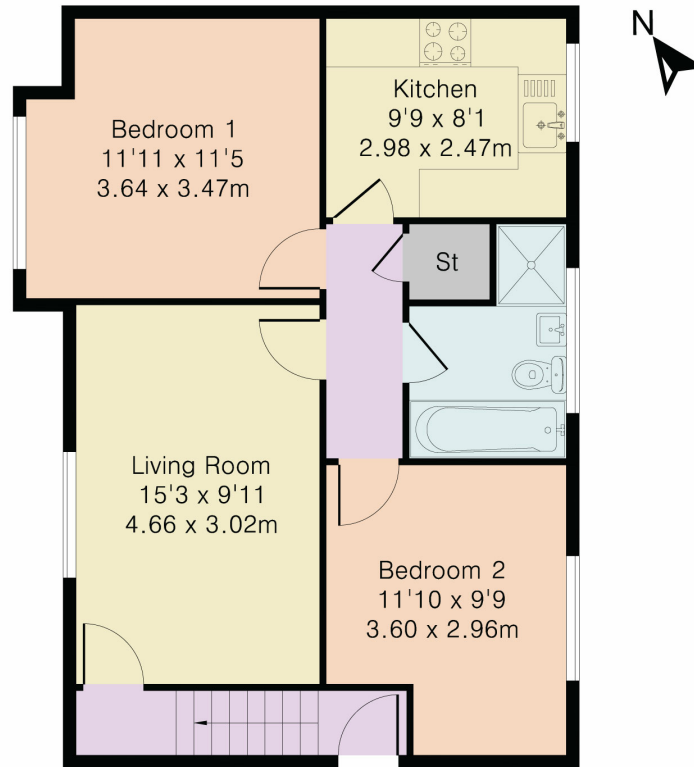
Barrett move presents a well proportioned two bedroom flat with parking and communal gardens in the heart of Flackwell Heath village.

POINTS OF INTEREST

- *****CHAIN FREE*****
- Two double bedrooms
- Loft, partially boarded with ladder and light
- First floor flat
- Parking space
- Good decorative order
- Communal gardens
- Close to shops, cafes and supermarket
- Convenient location
- Recommended for viewing



Approximate Gross Internal Area 615 sq ft – 57 sq m



First Floor



Although Pink Plan Ltd ensures the highest level of accuracy, measurements of doors, windows and rooms are approximate and no responsibility is taken for error, omission or misstatement. These plans are for representation purposes only as defined by RICS code of measuring practise. No guarantee is given on total square footage of the property within this plan. The figure icon is for initial guidance only and should not be relied on as a basis of valuation.

Energy Efficiency Rating		Current	Potential
<i>Very energy efficient - lower running costs</i>			
(92+)	A		
(81-91)	B		
(69-80)	C	75	78
(55-68)	D		
(39-54)	E		
(21-38)	F		
(1-20)	G		
<i>Not energy efficient - higher running costs</i>			
England, Scotland & Wales			
EU Directive 2002/91/EC			