

FOR SALE

Biscay Road,
Hammersmith, W6

Terraced House
Hammersmith

£850,000 fh

3  1  2 

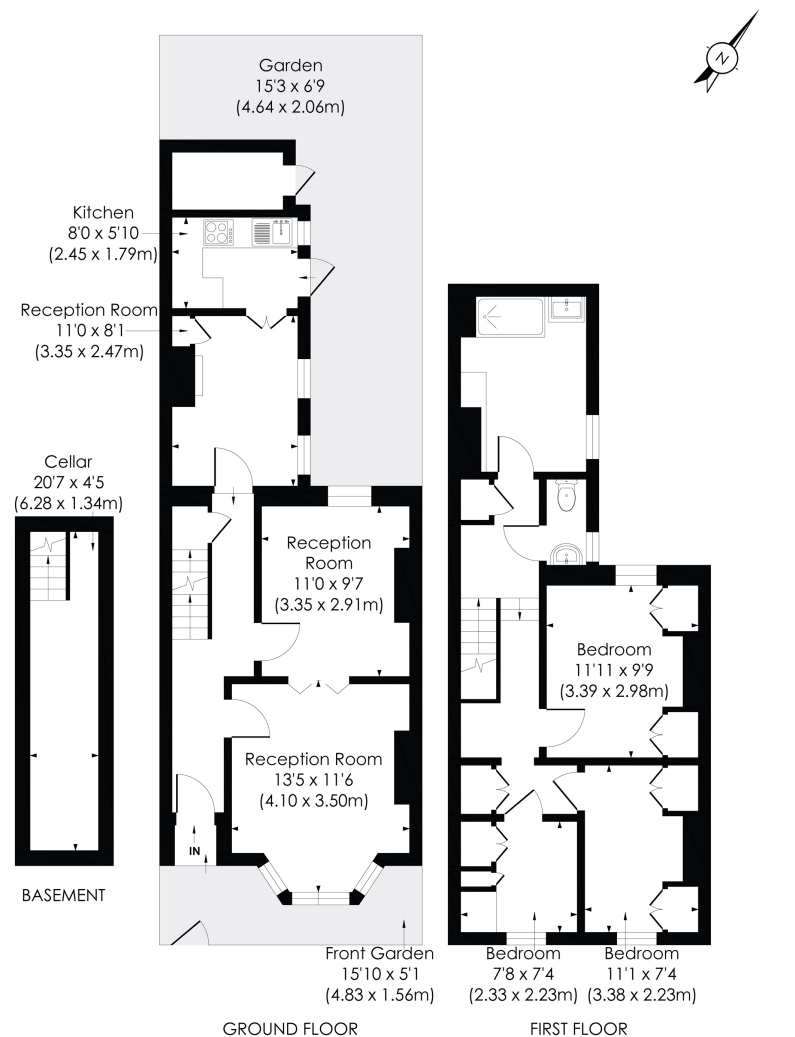


**horton
andgarton**

SALES / LETTINGS / PROPERTY MANAGEMENT

hortonandgarton.co.uk | Sales 020 8819 0510 | Lettings 020 8819 0511
172 King Street, Hammersmith, W6 0QU





BISCAY ROAD, W6

Approx. Gross Internal Floor Area
1121 Sq' / 104/12 SqM (Including Cellar)
1030 Sq' / 95.70 SqM (Excluding Cellar)

© Pixangle Property Marketing Ltd. info@pixangle.com Tel: 0208 870 2118

This floor plan has been prepared for the purpose of illustration only in accordance with the latest RICS code of measuring practice and is not to scale. All measurements and areas are approximate and whilst every effort has been made to ensure the accuracy of the plan contained here, no responsibility is taken for any error, omission or misstatement.

**horton
andgarton**



Terrace Victorian house | Three bedrooms - One bathroom | 1030 Sq' - 95.70 SqM | Fashionably unmodernised | EPC rating D | Hammersmith



hortonandgarton.co.uk
 Sales 020 8819 0510
 Lettings 020 8819 0511

172 King Street, Hammersmith, W6 0QU