



This charming Victorian style mid-terraced house is situated within walking distance of numerous popular schools including Langley Grammar School and Langley Academy, and combines modern convenience with multiple periodic features.

Internally the property offers a pleasant living room to the front and 17ft dining room open-plan to the kitchen, which offers access to the garden.

The first floor features three bedrooms and a spacious Victorian-style family bathroom. The loft has been converted with the addition of a dormer to create a commodious 19ft master bedroom with an en-suite shower room.

Externally, the private rear garden is mostly laid to lawn.

The property is ideally located a short distance from multiple local schools, and one mile from Langley station with direct lines into London.

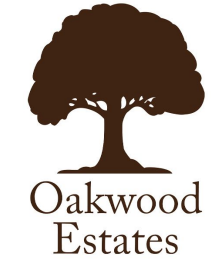




# Property Information

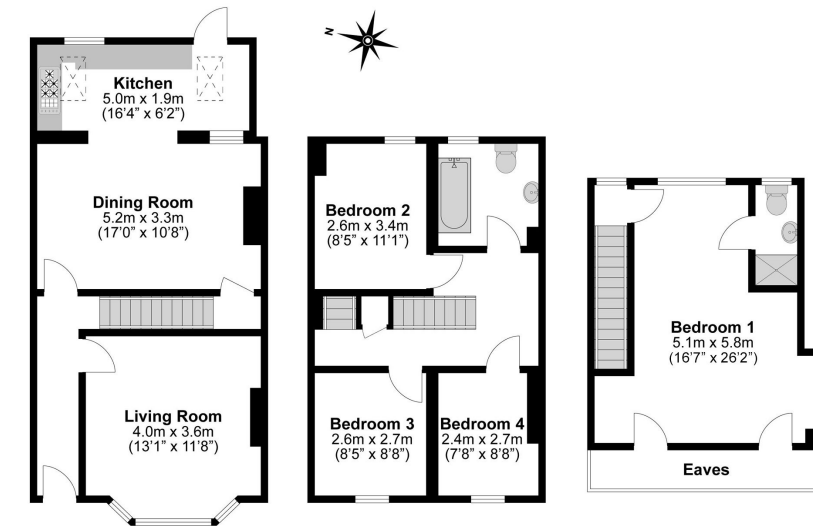
# Floor Plan

-  FOUR BEDROOM TERRACED HOUSE
-  WALKING DISTANCE TO UPTON COURT GRAMMAR SCHOOL
-  PRIVATE REAR GARDEN
-  EN-SUITE TO MASTER BEDROOM
-  IDEAL INVESTMENT OPPORTUNITY
-  SET ACROSS THREE FLOORS
-  TWO RECEPTION ROOMS
-  PERIOD FEATURES INCLUDING VICTORIAN STYLE FAMILY BATHROOM



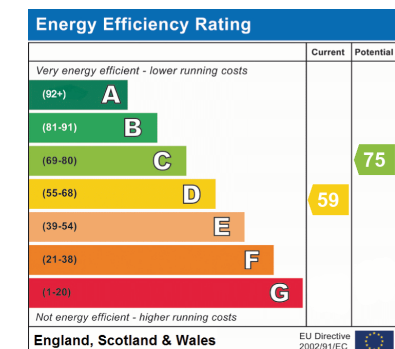
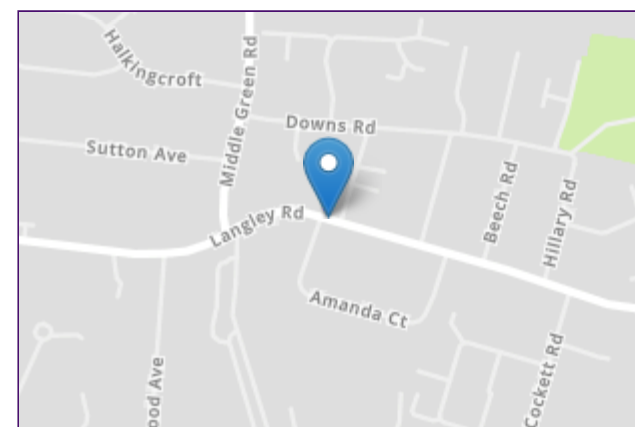
**Total Approximate Floor Area**  
1442 Square feet  
134 Square metres

					
x4	x2	x2	0	Y	N
Bedrooms	Reception Rooms	Bathrooms	Parking Spaces	Garden	Garage



**Illustrations are for identification purposes only, measurements are approximate, not to scale.**

Prospective purchasers should be aware that these sales particulars are intended as a general guide only and room sizes should not be relied upon for carpets or furnishing. We have not carried out any form of survey nor have we tested any appliance or services, mechanical or electrical. All maps are supplied by Goview.co.uk from Ordnance Survey mapping. Care has been taken in the preparation of these sales particulars, which are thought to be materially correct, although their accuracy is not guaranteed and they do not form part of any contract.



## Transport Links

Nearest stations

- Langley (1.2 miles)
- Slough (1.9 miles)
- Datchet (3.1 miles)

## Local Schools

### PRIMARY SCHOOLS

- Ryvers School  
0.1 miles away
- The Langley Academy Primary  
0.4 miles away
- Castleview Primary School  
0.5 miles away
- St Bernard's Preparatory School  
0.6 miles away
- Marish Primary School  
0.7 miles away

Langley Hall Primary Academy  
0.8 miles away

### SECONDARY SCHOOLS

- The Langley Academy  
0.4 miles away
- St Bernard's Catholic Grammar School  
0.5 miles away
- Langley Grammar School  
0.6 miles away
- Ditton Park Academy  
0.7 miles away
- Upton Court Grammar School  
0.7 miles away
- Council Tax**  
Band D