

20d Park Road, Bromley, Kent, BR1 3HP

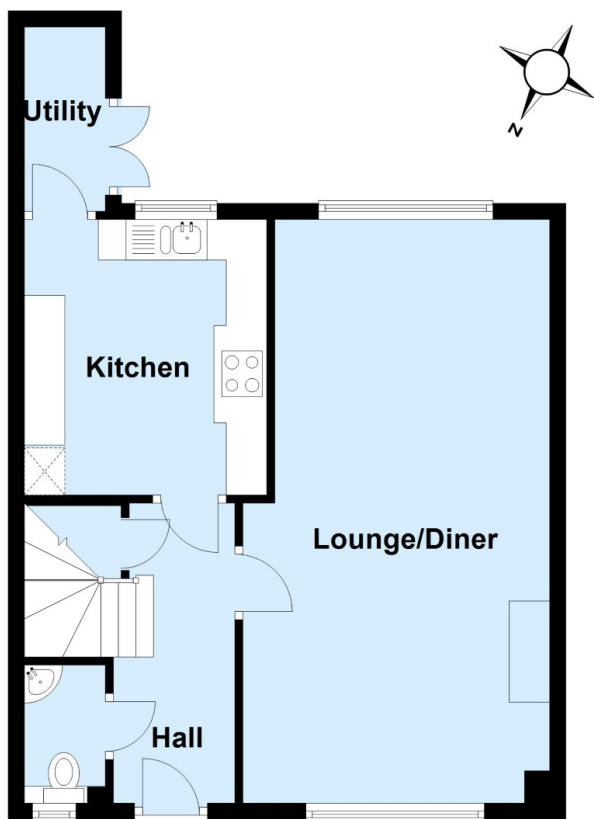
Property Images





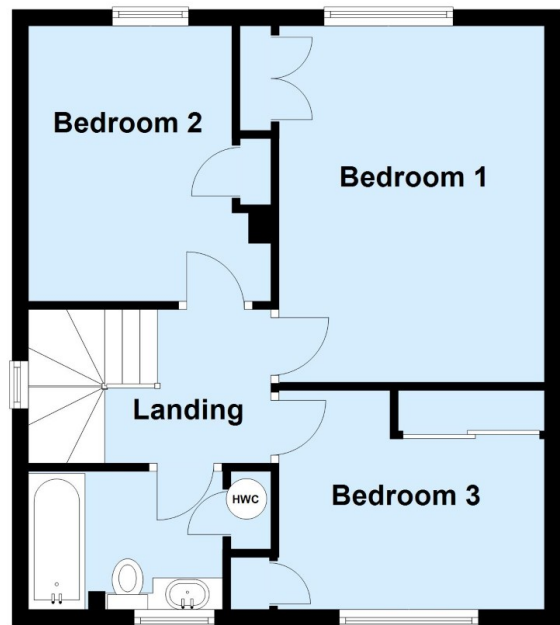
Ground Floor

Approx. 49.2 sq. metres (529.2 sq. feet)



First Floor

Approx. 46.0 sq. metres (494.8 sq. feet)



Total area: approx. 95.1 sq. metres (1024.0 sq. feet)

This plan is for general layout guidance and may not be to scale.
Plan produced using PlanUp.