

FOR SALE

Stowe Road,
Shepherd's Bush, W12

Flat
West London

£425,000 sh of fh

1  1  1 

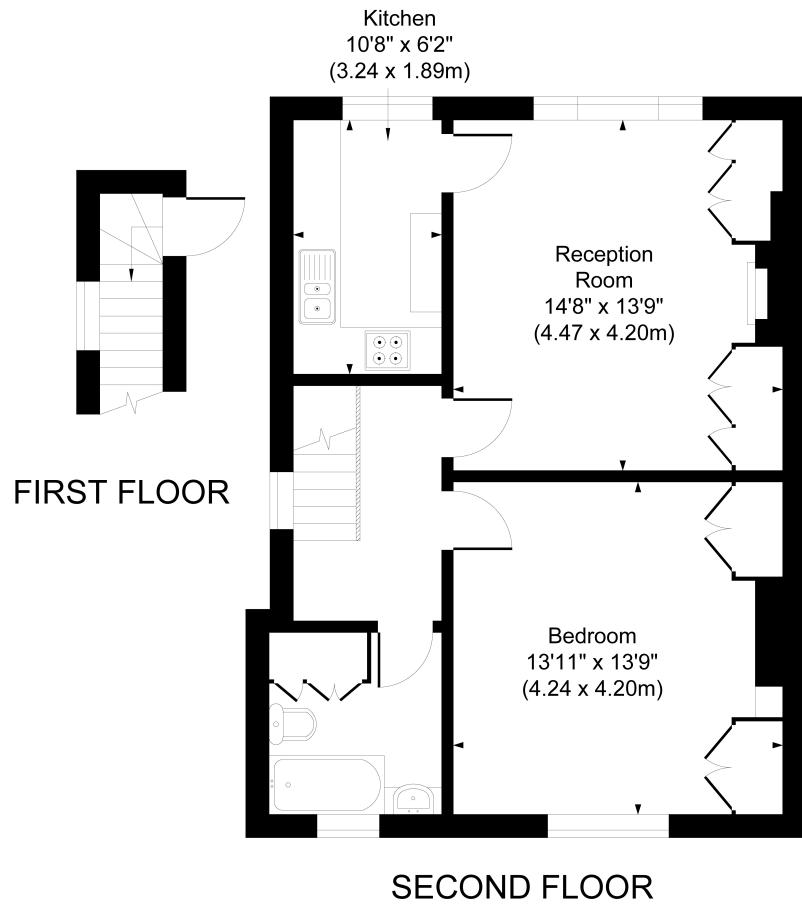


**horton
andgarton**

SALES / LETTINGS / PROPERTY MANAGEMENT

hortonandgarton.co.uk | Sales 020 8819 0510 | Lettings 020 8819 0511
172 King Street, Hammersmith, W6 0QU





**horton
andgarton**

STOWE ROAD, W12
APPROXIMATE GROSS INTERNAL AREA
626 Sq' / 58.14 SqM

Not to scale, for guidance only and must not be relied upon as a statement of fact.
All measurements and areas are approximate only



Top floor conversion flat | One bedroom - One bathroom
| 626 Sq' - 58.14 SqM | Light and airy | EPC rating C |
Shepherd's Bush



hortonandgarton.co.uk
Sales 020 8819 0510
Lettings 020 8819 0511

172 King Street, Hammersmith, W6 0QU