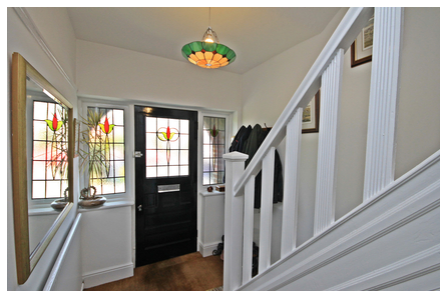


Burnside Avenue, Stockton Heath, Cheshire, £485,000

Offers in Excess of



BAY FRONTED SEMI-DETACHED - CLOSE
TO ALEXANDRA PARK - THREE
RECEPTION ROOMS - SOUTH FACING
REAR GARDEN - SOUGHT AFTER CUL-DE-
SAC.

 x 3  x 2

See more of this house at [ashtons.net](https://www.ashtons.net)

