



**GREGORY BROWN**  
RESIDENTIAL SALES & LETTINGS

OIEO £600,000 Freehold  
**FOR SALE**



## **Grosvenor Road, Staines- upon-Thames, Surrey, TW18 2RN**

SITUATED ALONG ONE OF STAINES' MOST SOUGHT AFTER ROADS IS THIS SPACIOUS THREE BEDROOM SEMI-DETACHED PROPERTY OFFERING GREAT SCOPE FOR EXTENSION/IMPROVEMENT (S.T.R.P.P). The property benefits from a spacious lounge/diner, separate kitchen/breakfast room, downstairs shower room, three well proportioned bedrooms, family bathroom, large secluded rear garden with outbuildings, off-street parking and garage. No Onward Chain. Viewings Highly Recommended!

**Gregory Brown**

127a, High Street, Staines-upon-Thames, TW18 4PD

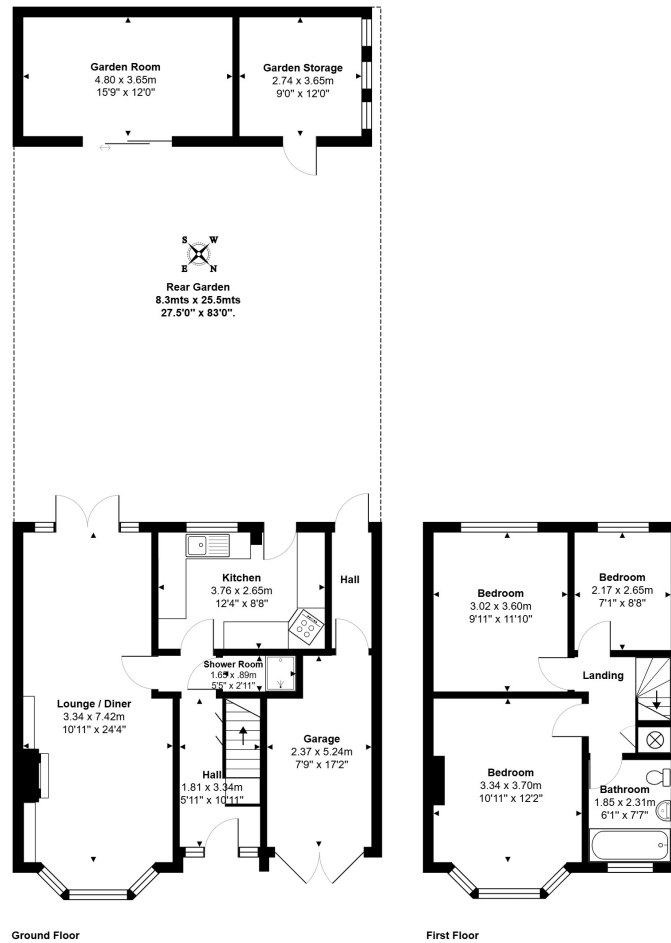
01784 451458

staines@gregory-brown.co.uk

ROOM DESCRIPTIONS

\_\_\_\_\_

# FLOORPLAN



Total Area: 119.2 m<sup>2</sup> ... 1283 ft<sup>2</sup>

All measurements are approximate and for display purposes only.

127a, High Street, Staines-upon-Thames, TW18 4PD

01784 451458

staines@gregory-brown.co.uk