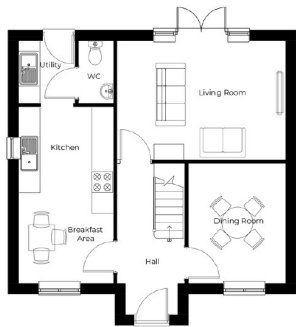
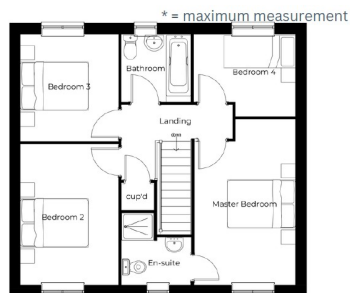




## Plot 1 The Kingston Putters Place, Damgate, Holbeach, Lincolnshire PE13 5DP £135,000



**GROUND FLOOR**  
Living Room - 4.86m x 3.44m  
WC - 1.84m x 1.04m  
Kitchen - 5.12m x 2.74m  
Dining Room - 3.49m x 2.83m  
Utility - 1.84m x 1.63m



**FIRST FLOOR**  
Master Bedroom - 4.65m\* x 2.84m  
En-Suite - 2.04m\* x 1.98m  
Bedroom 2 - 3.95m x 2.74m  
Bedroom 3 - 3m x 2.74m  
Bedroom 4 - 2.84m x 2.3m  
Bathroom - 1.97m x 1.88m



\*\*\* PLOT 1 – THE KINGSTON \*\*\* A stunning 4-bedroom detached family home with an extensive rear garden, located in the beautiful new Damgate, Holbeach development. Each home has been thoughtfully designed with high-quality finishes and modern features, including: • Electric car charging points • Outdoor taps and lighting • Waste water heat recovery systems • Photovoltaic (PV) solar panels Buyers can enjoy a choice of kitchen styles (with fully integrated A-rated appliances) and a full flooring package – ready to move into on completion. Combining modern architecture, energy efficiency, and spacious interiors, Damgate, Holbeach offers the perfect balance of peaceful rural living with easy access to local amenities, schools, and transport links. ✨ Plot 1 – The Kingston: Where modern living meets timeless comfort. ✨ #NewHomes #Holbeach #PropertyForSale #SustainableLiving #FamilyHome.



## PUTTERS PLACE, HOLBEACH

Nestled in the charming South Lincolnshire town of Holbeach, Putters Place is a beautiful, considerably designed development offering a range of 2, 3, 4, and 5-bedroom homes. The land lent itself as a golf course to the Manor House for a number of years and is how its name was coined.

Nursery, primary and secondary schools, independent and national shops, a doctor's office, pubs and restaurants are just a few of the town's many first-rate amenities. The Holbeach region, which is surrounded by rural areas and tiny welcoming villages, is renowned for its vibrant communities and prosperous flower and bulb industries.

Conveniently located near the A16 and A17, Holbeach provides useful access to Peterborough (23 miles away) and Kings Lynn (20 miles away) if commuting is a consideration, both offering direct routes to London via train. If you venture to one of the neighbouring towns, Spalding lies just 8 miles away and is easily accessible via the regular public transport links. The town offers Springfields Shopping Outlet, featuring many big-name outlet stores and beautifully scenic gardens accompanied by a selection of coffee shops and restaurants to enjoy.

Every home in our development includes an extensive range of thoughtful features as standard, such as front and rear garden turf, electric car charging points, outdoor taps and lights, water recovery systems for main showers, and photovoltaic (PV) panels. With every property, buyers are offered a selection of choices for their kitchen (which comes with fully integrated A-rated appliances) and a full flooring package, which ensures all our new homes are move-in ready at completion. So, if you're looking for your new home in a semi-rural, vibrant community, this could be ideal for you.

## SPECIFICATION

All plots include EV chargers, Solar panels and Waste water recovery system.

## DOOR INTO:

## ENTRANCE HALL

Stairs to first floor accommodation with cupboard under.

## DINING ROOM

11' 5" x 9' 3" (3.49m x 2.83m) Window to front.

## LOUNGE

15' 11" x 11' 3" (4.86m x 3.44m) French doors to the rear with windows either side.

## KITCHEN / BREAKFAST ROOM

16' 10" x 9' 0" (5.12m x 2.74m) Window to front and side. Opening to:

## UTILITY ROOM

Door to garden.

## CLOAKROOM

To be fitted with a two piece suite comprising wash hand basin and WC. Extractor fan.

## LANDING

Airing cupboard. Doors to.

## BEDROOM ONE

15' 3" max x 9' 4" (4.65m x 2.84m) Window to front. Door to:

## EN SUITE

To be fitted with a three piece suite comprising shower cubicle, wash hand and WC. Window to the front.

## BEDROOM TWO

13' 0" x 6' 6" (3.95m x 1.98m) Window to front.

## BEDROOM THREE

9' 10" x 9' 0" (3m x 2.74m) Window to rear.

## BEDROOM FOUR

9' 4" x 7' 7" (2.84m x 2.3m) Window to rear.

## BATHROOM

To be fitted with a three piece suite comprising bath, wash hand basin and WC. Window to rear.

## OUTSIDE

Driveway leading to a single garage with EV charger.

## AGENT NOTES

Please note that this property is currently under construction and descriptions are applicable to the finished property. As with most new build developments we are informed there will be an annual charge of circa £200 per annum

## AGENTS NOTE ON IMAGES

⏏ This symbol indicates use of AI to digitally enhance an image. Examples may include removing temporary objects such as vehicles or personal items, adding virtual furniture to an empty space for proportion and lifestyle ideas, or adjusting the sky. The property itself or it's condition are never altered.

