

# HAMPTON PARK

£384,950

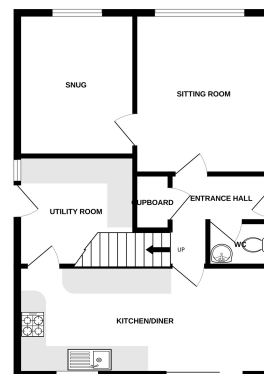


## Key Features

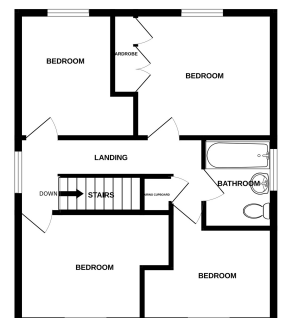
- ✓ 4 bedroom detached family home
- ✓ Kitchen/ Dining room
- ✓ Cloakroom
- ✓ Converted garage into a family room



GROUND FLOOR  
575 sq. ft. (53.5 sq.m.) approx.



1ST FLOOR  
490 sq. ft. (45.6 sq.m.) approx.



TOTAL FLOOR AREA: 1,065 sq. ft. (99.0 sq.m.) approx.  
\*As per Measure 10004