



£400,000 Freehold



Ceres Road, Plumstead, London



PROPERTY DESCRIPTION

RE/MAX are delighted to offer for sale this Victorian house situated on a popular residential road close to schools, amenities, and transport links, including Plumstead station. This property comprises 2 double bedrooms, 2 reception rooms, kitchen, sun room, upstairs family bathroom, and separate w/c. Further benefits include loft room, porch, double glazing, gas central heating, and approximately 60ft south-facing garden.

Total Internal Area approx: 1,138.82 sq ft (105.80 sq m). EPC Rating D56

FEATURES

- Victorian house
- 2 bedrooms
- 2 reception rooms
- Sun room
- Fitted kitchen
- Upstairs family bathroom
- Separate w/c
- Loft room
- 60ft (approx) south-facing rear garden





ROOM DESCRIPTIONS

Ground Floor

Porch

Carpeted.

Hallway

Original Victorian ceiling coving; dado rail, radiator, understairs cupboards; access to cellar.

Living Room

Carpeted, ceiling coving, radiator, decorative fireplace, double glazed windows.

Dining Room

Carpeted, ceiling coving, radiator, double glazed windows.

Kitchen

Tiled flooring, ceiling coving; range of wood wall and base units with tiled splashback; stainless steel extractor hood, fitted electric hob, extractor hood, wall-mounted combination boiler, double glazed windows; space and connections for washing machine; space and connections for fridge/freezer.

Sun Room

Tiled flooring, electrical power.

First Floor

Landing

Carpeted, dado rail.

Bedroom

Carpeted, ceiling coving, radiator, fitted wardrobes, double glazed windows.

Bedroom

Carpeted, ceiling coving, radiator, double glazed windows.

Bathroom

Tiled flooring; bath with shower-mixer; w/c, wash-hand basin, radiator, double glazed windows.

Separate W/C

Tiled flooring, w/c, double glazed windows.

Second Floor

Landing

Carpeted.

Loft Room

Carpeted, eaves storage, dual-aspect double glazed Velux windows.

External

Front Garden

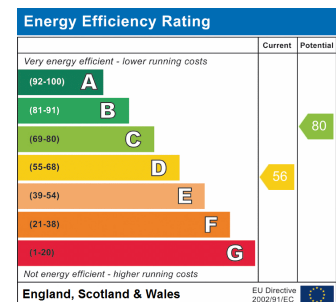
Paved, wall.

Rear Garden

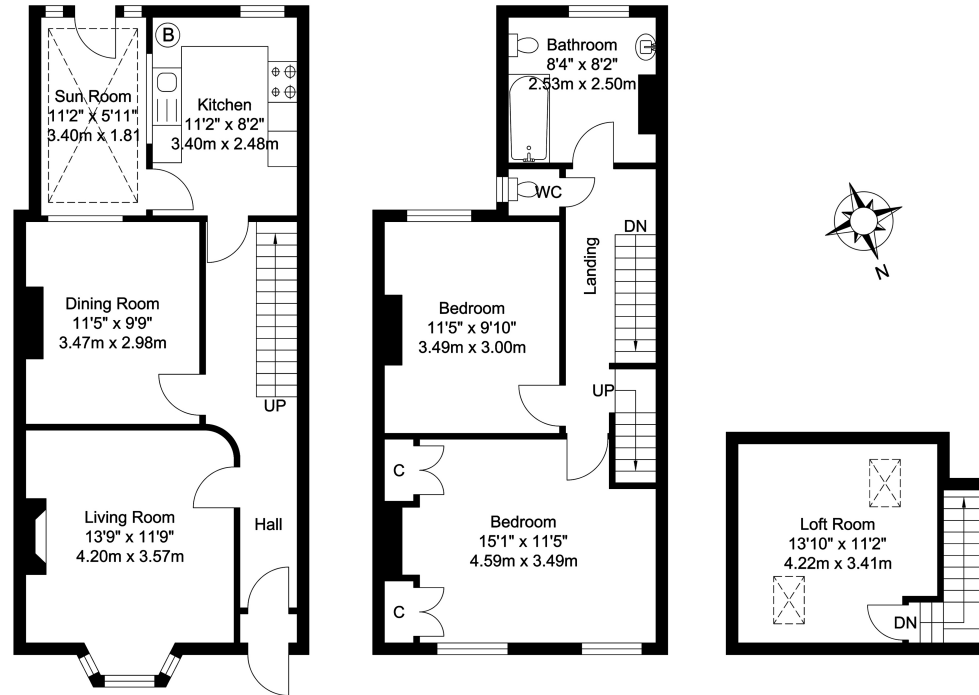
Approximately 60ft, south-facing; patio, lawn, outdoor tap.

Information:

- Council Tax: Band C



FLOORPLAN



Ground Floor
Approximate Floor Area
534.21 SQ.FT.
(49.63 SQ.M.)

First Floor
Approximate Floor Area
456.49 SQ.FT.
(42.41 SQ.M.)

Loft Floor
Approximate Floor Area
148.11 SQ.FT.
(13.76 SQ.M.)

TOTAL APPROX FLOOR AREA 1138.82 SQ.FT. (105.80 SQ. M.)

For Identification Purposes Only.

