

Adcote Road
Liverpool
Merseyside
L14 0LN

Offers In Excess Of £129,000

bettermove

Adcote Road

Liverpool

Bettermove are proud to present this 2 bedroom terraced house in Liverpool, available with no forward chain, welcoming cash buyers only.

The property benefits from off street parking available via the driveway. The council tax band is A.

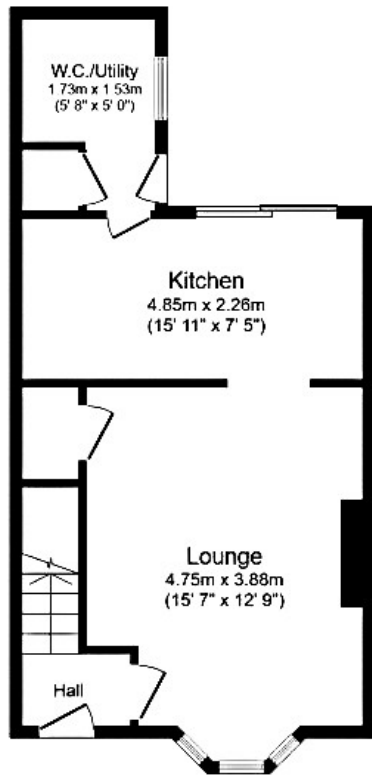
This is a leasehold property of 999 years remaining on the lease; starting from 1981.

The interior of this beautifully presented property comprises a spacious living room, utility/WC and fitted kitchen on the ground floor. The first floor consists of 2 bedrooms and a shower room. The exterior boasts a private rear paved garden, perfect for enjoying the summer months.

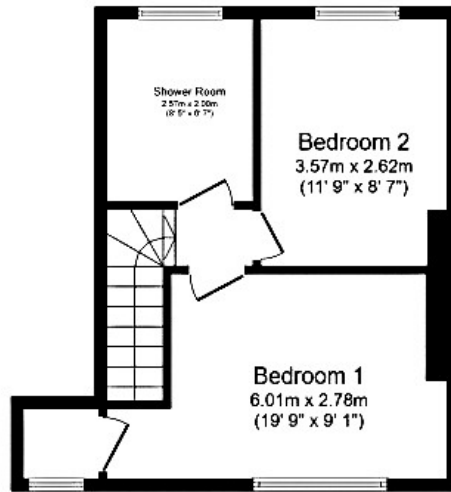
Located in the popular city of Liverpool, the property is close to a range of amenities, including shops, supermarkets, restaurants and pubs. Excellent transport connections can be found from Broad Green and Roby Railway Stations, as well as a range of local bus routes, and quick access to the M62.

This exciting opportunity should not be missed! All enquiries can be made through Bettermove on 0330 004 0050.





Ground Floor



First Floor

Total floor area 71.9 m² (773 sq.ft.) approx

This floor plan is for illustrative purposes only. It is not drawn to scale. Any measurements, floor areas (including any total floor area), openings and orientation are approximate. No details are guaranteed, they cannot be relied upon for any purpose and they do not form part of any agreement. No liability is taken for any error, omission or misstatement. A party must rely upon its own inspection(s). Powered by www.focalagent.com



20-22 Bridge End, Leeds, LS1 4DJ
t: 0330 004 0050 e: hello@bettermove.co.uk
www.bettermove.co.uk