

Entrance Hall

A spacious entrance hall with staircase to the first floor and doors to;

Shower Room

A modern shower room with shower cubical, wash hand basin and W.C.

Utility Room

With plumbing for washing machines and door to the ground floor study/wash room.

Study

9' 9" x 7' 1" (2.97m x 2.16m)

Bedroom Two

15' 9" x 9' 6" (4.80m x 2.90m)

First Floor Landing

Lounge/Kitchen/Dining Room

29' 7" x 16' 7" (9.02m x 5.05m)

W.C

Bedroom One

12' 8" x 10' 8" (3.86m x 3.25m)

Bedroom Three

10' 6" x 7' 5" (3.20m x 2.26m)

Bedroom Four

8' 8" x 7' 6" (2.64m x 2.29m)

Second Office/Bedroom Five

7' 7" x 7' 6" (2.31m x 2.29m)

Off Road Parking

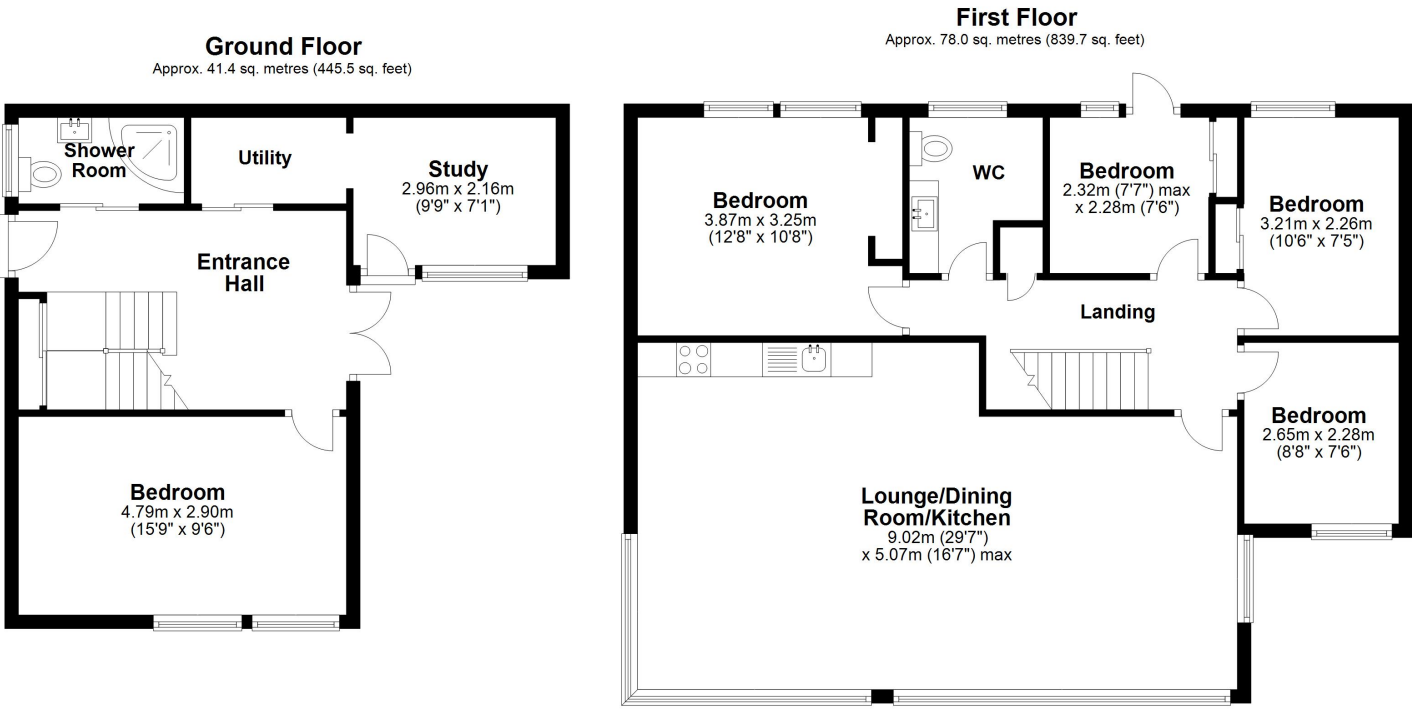
The property offers gated off road parking to the front, with space for two vehicles.

Ground Floor Courtyard

The property has a ground floor courtyard area.

Rear Garden + Roof Terrace

The tiered rear garden has steps to an elevated decking area that looks out to sea.



Total area: approx. 119.4 sq. metres (1285.2 sq. feet)

Whilst every attempt has been made to ensure the accuracy of the floor plan contained here, measurements of doors, windows, rooms and any other items are approximate and no responsibility is taken for any error, omission or mis-statement. This plan is for illustrative purposes only and should be used as such by any prospective purchaser.
Plan produced using PlanUp.

