



This four bedroom terraced townhouse is part of a superb development of six luxurious properties located within Farnham Royal and under construction by Beek's Developments due to be completed in early 2025.

The property stretches to approximately 1648 sqft and is finished to a high specification.

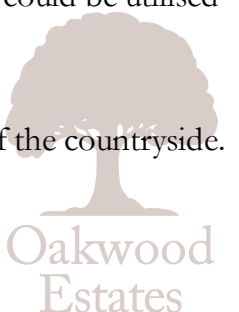
The ground floor features a stunning 20ft 'shaker style' kitchen/diner with quartz worktops and fitted 'Neff' appliances, a 16ft bay fronted living room, a downstairs cloakroom and entrance hall. The property benefits from underfloor heating and an air source heat pump in addition to pre-finished Oak doors throughout.

To the first floor there are two double-sized bedrooms with the master bedroom benefiting from an ensuite shower room in addition to a three piece family bathroom. The bathrooms as a whole benefit from 'Roca' sanitaryware.



The second floor hosts a further two bedrooms and a three piece bathroom. Bedroom four could be utilised as a study if necessary.

Externally, the rear garden is mainly laid to lawn - backing onto equestrian land with views of the countryside.

The property provides parking for at least two cars.



Property Information

-  A FANTASTIC DEVELOPMENT OF SIX LUXURIOUS TOWNHOUSES
-  APPROX. 1648 SQFT
-  20FT QUARTZ FITTED KITCHEN/DINER
-  3 BATHROOMS
-  STUDY/BEDROOM 4
-  COMPLETION DUE IN APRIL 2025
-  UNDERFLOOR HEATING
-  16FT LIVING ROOM
-  DOWNSTAIRS CLOAKROOM
-  BACKING ONTO EQUESTRIAN LAND

					
x4	x2	x3	0	N	N
Bedrooms	Reception Rooms	Bathrooms	Parking Spaces	Garden	Garage

Location

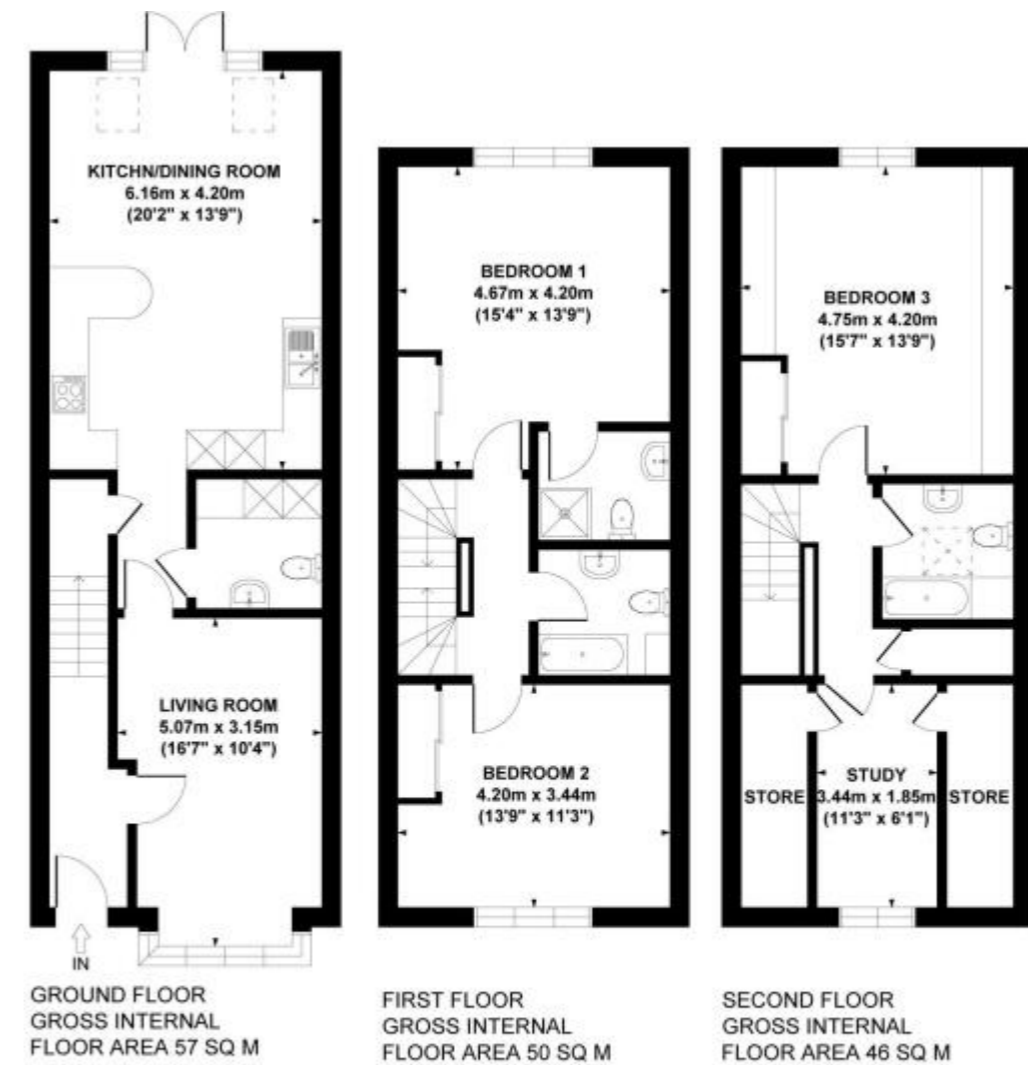
The property is located on a quiet cul-de-sac, close by to Farnham Common, which offers an array of boutique shops, national grocery stores and coffee shops, as well as a selection of interesting restaurants and pubs. There is a well-respected local infant and junior school within walking distance, and private schools in the area include Dair House (with nursery) and Caldicott School for Boys.

Burnham Beeches, a National Nature Reserve, is just 1 mile away, providing acres of peaceful woodland walks, trail runs, and adventures.

For commuters, there is a fast track train line at Gerrards Cross, giving swift access to London Marylebone in under 30 minutes. The recently opened Elizabeth Line is serviced from nearby Burnham Station, just 2.7 miles away. The M40 is within 2 miles, giving access to the M25 and M4, with Heathrow close by.

Buckinghamshire is renowned for its excellent choice of state and independent schools, including Burnham Grammar for girls and boys, Beaconsfield High for Girls,

Floor Plan



PLOTS 2-COBLERS CLOSE, FARNHAM ROYAL, SL2
APPROX. GROSS INTERNAL FLOOR AREA 153 SQ M / 1648 SQ FT
FLOOR PLAN IDENTIFICATION PURPOSES ONLY -NOT TO SCALE

Prospective purchasers should be aware that these sales particulars are intended as a general guide only and room sizes should not be relied upon for carpets or furnishing. We have not carried out any form of survey nor have we tested any appliance or services, mechanical or electrical. All maps are supplied by Goview.co.uk from Ordnance Survey mapping. Care has been taken in the preparation of these sales particulars, which are thought to be materially correct, although their accuracy is not guaranteed and they do not form part of any contract.

