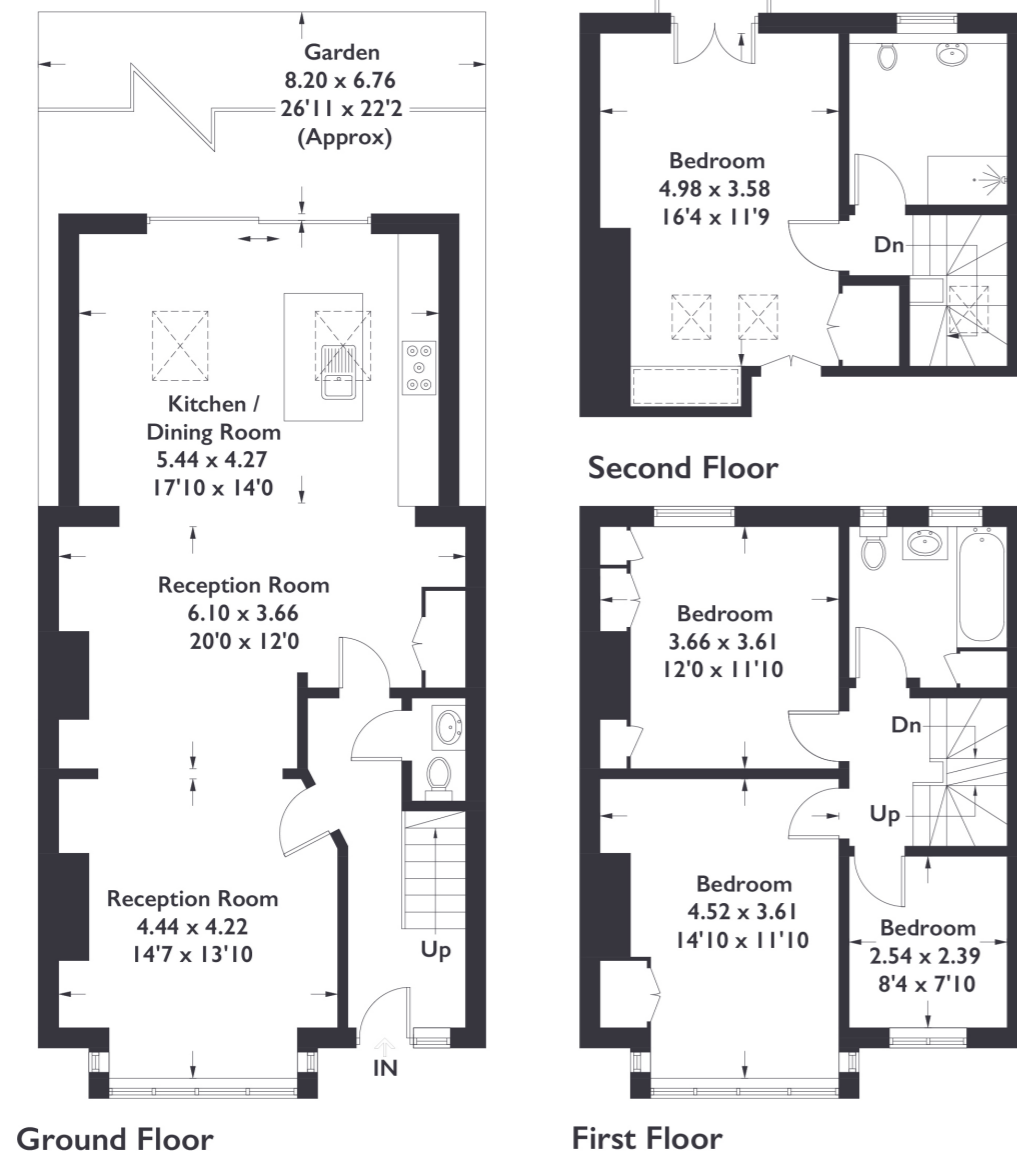


Camborne Avenue, W13

Approximate Gross Internal Area = 152.1 sq m / 1638 sq ft



= Reduced Headroom



Measured in accordance with RICS Code of Measuring Practice. To be used for identification and guidance purposes only. Whilst every care is taken in the preparation of this plan, please check all dimensions, shapes and compass bearings before making any decisions reliant upon them.



4 BEDROOM HOUSE

Camborne Avenue, W13

£1,250,000

This flawless Edwardian four bedroom house is located in one of Northfields' premier roads.

The era of construction is reflected in a magnificent refurbishment which seamlessly mixes period detailing with contemporary style. The result is a fine family home with a fabulous open plan kitchen/ diner leading to the landscaped secluded garden all within moments of Walpole and Lammas parks, Northfields tube station and West Ealing Crossrail.

FEATURES

- Open Plan Ground Floor
- Landscaped South Facing Garden
- Two Luxury Bathrooms
- Close to West Ealing Crossrail
- Dressing Area
- Fielding Primary Catchment



4 BEDROOM HOUSE

Camborne Avenue, W13

With perfectly balanced open plan living, kitchen and dining space mixed with quieter rooms. this fine home is perfect for a growing family.

With Fielding Primary School close by and a high standard of fixtures and fittings throughout, this a turnkey solution for buyers wanting to move straight in.

