

Arundell Road, Weston-Super-Mare, Somerset. BS23 2PD

£185,000 Leasehold

FOR SALE



www.housefox.co.uk



01934 314242
01275 404601
01278 557700
sales@housefox.co.uk

PROPERTY DESCRIPTION

Don't judge a book by it's cover, this purpose built second floor flat needs to be viewed internally, the current owner has updated and decorated the flat to a lovely standard and once inside the property has a lovely light and airy feel to it.

Being on Weston-super-Mare hillside the flat has panoramic views over the town and yet it's within a ten to fifteen minute walk of the town centre, sea front, parks, cafes, restaurants and bars.

The flat comprises hallway, lounge/diner, two double bedrooms, shower room, fitted modern kitchen, plus gas central heating, double glazing and two parking spaces.

FEATURES

- Panoramic views
- Immaculate condition
- Two double bedrooms
- Two parking spaces
- Double glazing
- Gas central heating
- Hillside location
- Fitted modern kitchen
- EPC-D



ROOM DESCRIPTIONS

Communal front door to communal hallway:

Communal hallway:

Entry phone system, stairs or lift to all floors.

Door to flat:

Hallway:

Entry telephone system, two cupboards, doors to shower room, lounge, bedrooms and kitchen.

Lounge/diner

7.57m x 3.77m (24' 10" x 12' 4") A lovely light room with triple aspect, to the the front the double glazed windows open fully giving you panoramic views over the town. Two radiators, television point.

Kitchen:

3.08m x 2.61m (10' 1" x 8' 7") A modern re-fitted kitchen comprising a range of matching floor and wall units, single drainer sink unit, plumbing for washing machine, built in oven, hob and microwave, integrated fridge/freezer, double glazed window giving panoramic views.

Bedroom 1:

3.60m x 3.33m (11' 10" x 10' 11") Built in wardrobes, double glazed window, radiator.

Bedroom 2:

3.60m x 3m (11' 10" x 9' 10") Built in cupboard, double glazed window, radiator.

Shower room:

Re-fitted suite comprising walk in shower cubicle, wash hand basin, low level WC, heated towel rail, two double glazed windows.

Parking:

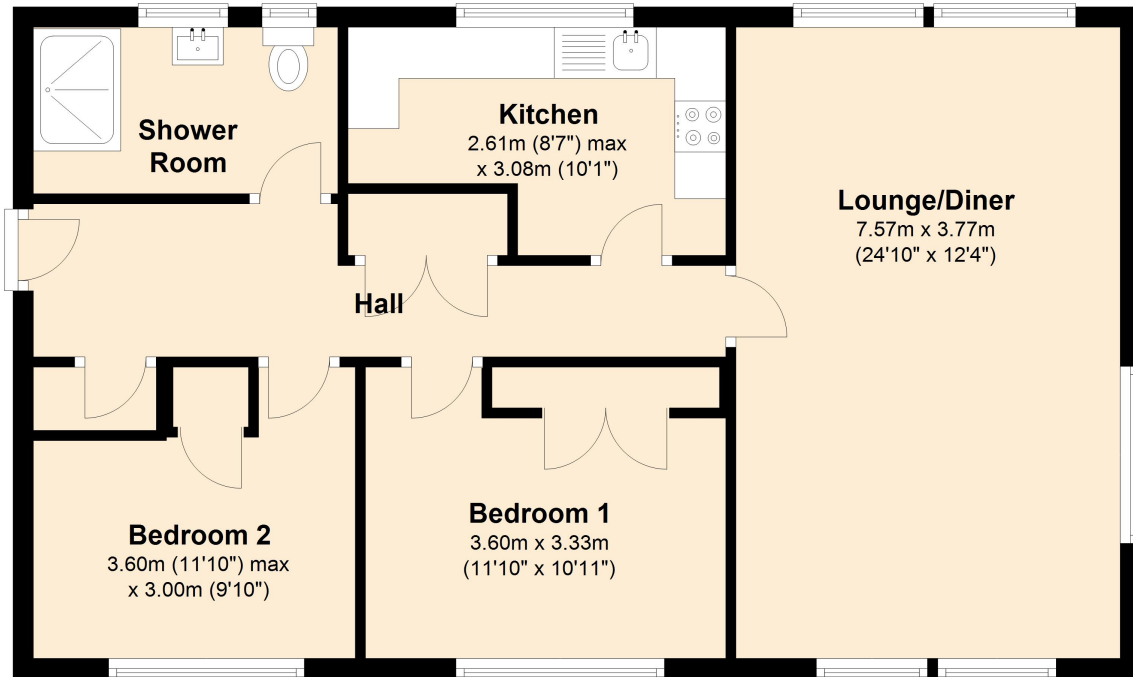
The flat comes with two allocated parking spaces.



FLOORPLAN & EPC

Floor Plan

Approx. 65.9 sq. metres (709.5 sq. feet)



Total area: approx. 65.9 sq. metres (709.5 sq. feet)

