

Swinhoe Place, Culcheth, WA3 4NE £240,000

Offers Over

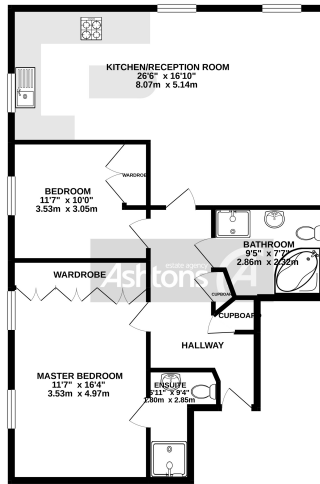


Modern two bedroom first floor apartment situated in the prestigious development of Swinhoe Place in Culcheth, This first floor apartment offers spacious living space with allocated off road parking and two garages which is rare to find in apartments on this development.
[See more of this house at ashtons.net](http://ashtons.net)

 x 2  x 1



SECOND FLOOR
935 sq.ft. (86.8 sq.m.) approx.



TOTAL FLOOR AREA: 935 sq.ft. (86.8 sq.m.) approx.
While every effort has been made to ensure the accuracy of the floor plan, Ashtons, its agents, and its staff, do not accept any responsibility for any errors or omissions. The actual area and dimensions may vary from those shown on the floor plan.

Modern two bedroom first floor apartment situated in the prestigious development of Swinhoe Place in Culcheth, This first floor apartment offers spacious living space with allocated off road parking and two garages which is rare to find in apartments on this development. In brief the accommodation comprises large entrance hallway, open plan lounge/diner with modern fitted kitchen with several built in appliances, master bedroom with en suite shower room, second double bedroom and fitted three piece bathroom suite all in immaculate condition, Communal gardens and grounds with double garage and allocated off road parking to the rear, Electric heating and double glazing. Early viewings are advised to avoid disappointment



www.ashtons.net



Fixtures and fittings: A list of the fitted carpets, curtains, light fittings and other items fixed to the property which are included in the sale (or may be available by separate negotiation) will be provided by the Seller's Solicitors. **Important Notice:** 1. Particulars: These particulars are not an offer or contract, nor part of one. You should not rely on statements by Ashtons in the particulars or by word of mouth or in writing ("information") as being factually accurate about the property, its condition or its value. Neither Ashtons nor any joint agent has any authority to make any representations about the property, and accordingly any information given is entirely without responsibility on the part of the agents, seller(s) or lessor(s). 2. Photos, Videos etc: The photographs, property videos and virtual viewings etc. show only certain parts of the property as they appeared at the time they were taken. Areas, measurements and distances given are approximate only. 3. Regulations etc: Any reference to alterations to, or use of, any part of the property does not mean that any necessary planning, building regulations or other consent has been obtained. A buyer or lessee must find out by inspection or in other ways that these matters have been properly dealt with and that all information is correct. 4. To find out how we process Personal Data, please refer to our Group Privacy Statement and other notices at <https://www.ashtons.net/privacy-policy/>