



Ivydene Ivydene, Wheel Hill, Laxey, Isle of Man. IM4 7NL

The 2-bedroom detached cottage in Laxey, Isle of Man, is a delightful and picturesque dwelling located beneath the iconic Laxey Wheel. Nestled amidst a serene and charming setting, this cottage offers a tranquil retreat for its residents.



350000 £350,000 Leasehold

PROPERTY DESCRIPTION

Detached 2-3 bedroomed cottage Circa 18 century with two sun terrace areas including a views of the Laxey Wheel. In addition there is a BBQ decking area plus there are open terraced gardens, vegetable gardens, 3 potting sheds, detached single garage and walking distance to the shore and beach. The Shore Hotel & Mona Lisa restaurants provide excellent food plus a selection of local shops and pubs and walking distance to the Shed, Ice cream parlor on the Laxey coast and beach. Stunning hill views & views of the electric tram to the Snaefell mountain summit.

Upon entering the cottage, you are greeted by a warm and inviting living area. The interior exudes a rustic yet contemporary feel with its wooden beams, exposed brickwork, and tasteful decor. Natural light floods through the windows. Overall, this 2-bedroom detached cottage in Laxey, Isle of Man, presents a wonderful opportunity to embrace a quintessential countryside lifestyle. Its proximity to the stunning Laxey Wheel adds historical significance and charm to the property, while the serene terraced gardens offer the perfect space to unwind and enjoy the beauty of nature.

INCLUSIONS Floor coverings.

FEATURES

- Delightful Detached Cottage with Terraced Gardens
- One Garage plus parking for two – three cars
- Lounge, Dining Room or Bedroom 3
- Cottage Kitchen & Separate W.C
- First Floor 1 Double Bedroom plus single Bedroom & Large Bathroom
- Sunny Terraced Area to front with hill views
- uPVC Windows & Gas Fired Central Heating & Insulated Water Tank
- Decking with Hot Tub
- Open Storage area to rear, Outside Tap
- 2 Garden Sheds, 1 Summer House
- Hen Enclosure, Raised Vegetable Beds

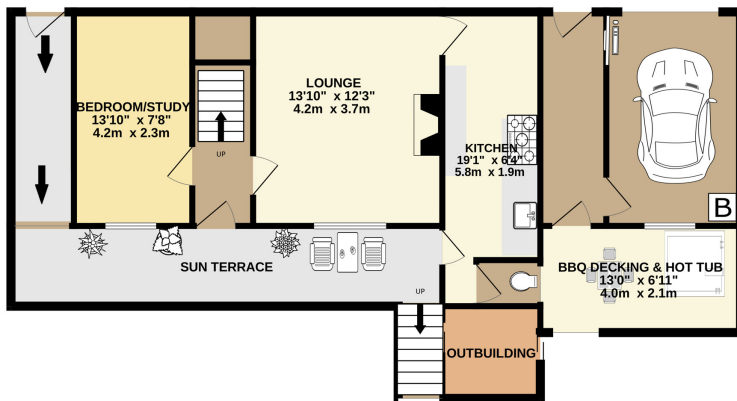


Property Images

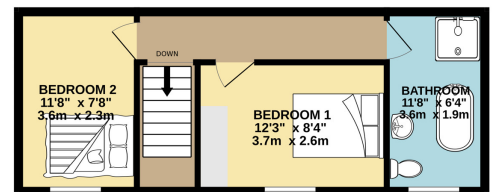


FLOORPLAN

GROUND FLOOR



1ST FLOOR



DETACHED COTTAGE WITH GARDENS & GARAGE NEXT TO LAXEY WHEEL

Whilst every attempt has been made to ensure the accuracy of the floorplan contained here, measurements of doors, windows, rooms and any other items are approximate and no responsibility is taken for any error, omission or mis-statement. This plan is for illustrative purposes only and should be used as such by any prospective purchaser. The services, systems and appliances shown have not been tested and no guarantee as to their operability or efficiency can be given.
Made with Metropix ©2023



DISCLAIMER: Whilst Manxmove Ltd believe that these details are correct, neither Manxmove Ltd or their clients guarantee their accuracy in any way. Consequently, these details are not to be used to form part of any legally binding contract. Prospective purchasers or tenants are advised to visit this property to satisfy themselves as to the correctness of these details. Please note, we use wide angle camera lenses in order to show as much of each room as possible. This is not intended to mislead any prospective purchasers or tenants in any way and an honest verbal description is always available prior to viewing if required.