

# FOR SALE

Oxford Gardens,

Terraced House

£1,200,000 fh

4  3  2 

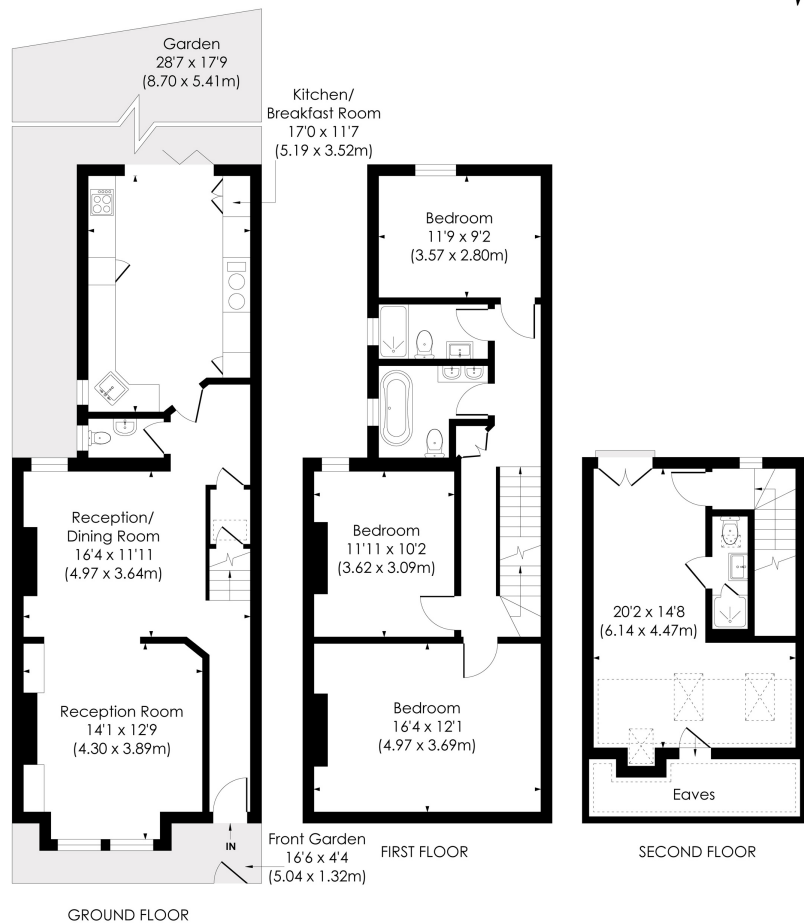


**horton  
andgarton**

SALES / LETTINGS / PROPERTY MANAGEMENT

[hortonandgarton.co.uk](https://hortonandgarton.co.uk) | Sales 020 3989 6464 | Lettings 020 3989 5454  
161 Chiswick High Road, London, W4 2DT





### OXFORD GARDENS, W4

Approx. Gross Internal Floor Area

**1666 Sq'/154.76 SqM (Incl RHH)**

**1526 Sq'/141.80 SqM (Excl RHH)**

**horton  
andgarton**

This floor plan has been prepared for the purpose of illustration only in accordance with the latest RICS code of measuring practice and is not to scale. All measurements and areas are approximate and whilst every effort has been made to ensure the accuracy of the plan contained here, no responsibility is taken for any error, omission or misstatement.



Mid terrace family house | Four bedrooms - Three bathrooms | 1526 Sq' - 141.80 SqM | Superbly presented | EPC rating C | Gunnersbury



hortonandgarton.co.uk

Sales 020 3989 6464

Lettings 020 3989 5454

161 Chiswick High Road, London, W4 2DT