

Virgo Fidelis The Penthouse, 76a Shorncliffe Road

FOLKESTONE, Kent
CT20 2UN

£750,000 LEASEHOLD

FOR SALE WITH BURNAP + ABEL... Welcome to the epitome of luxury living at Virgo Fidelis, located on Shorncliffe Road in beautiful Folkestone. This breath-taking 2 bedroom penthouse boasts elegance and sophistication at every turn. Step inside and be greeted by a private lift that effortlessly transports you into the grand hallway. The open-plan lounge, kitchen, and dining room showcase a modern design with high-end finishes and plenty of natural light streaming in from the private balconies and floor to ceiling windows. With two parking spaces included, convenience is key when calling this penthouse home. Whether you're relaxing in the spacious living area or enjoying al fresco dining on one of the two balconies, this property offers a lifestyle unmatched by any other. Don't miss your chance to experience luxury living at its finest in Virgo Fidelis - schedule your viewing today!



Porch

Entrance Hall

A spacious entrance hall with private lift and doors leading to;

Lounge

24' 2" x 18' 4" (7.37m x 5.59m)

Kitchen/Dining Room

30' 4" x 17' 6" (9.25m x 5.33m)

Balcony from Kitchen/Diner

Bedroom One

18' 11" x 10' 8" (5.77m x 3.25m)

Walk-In Wardrobes

En-Suite

Balcony From Bedroom One

Bedroom Two

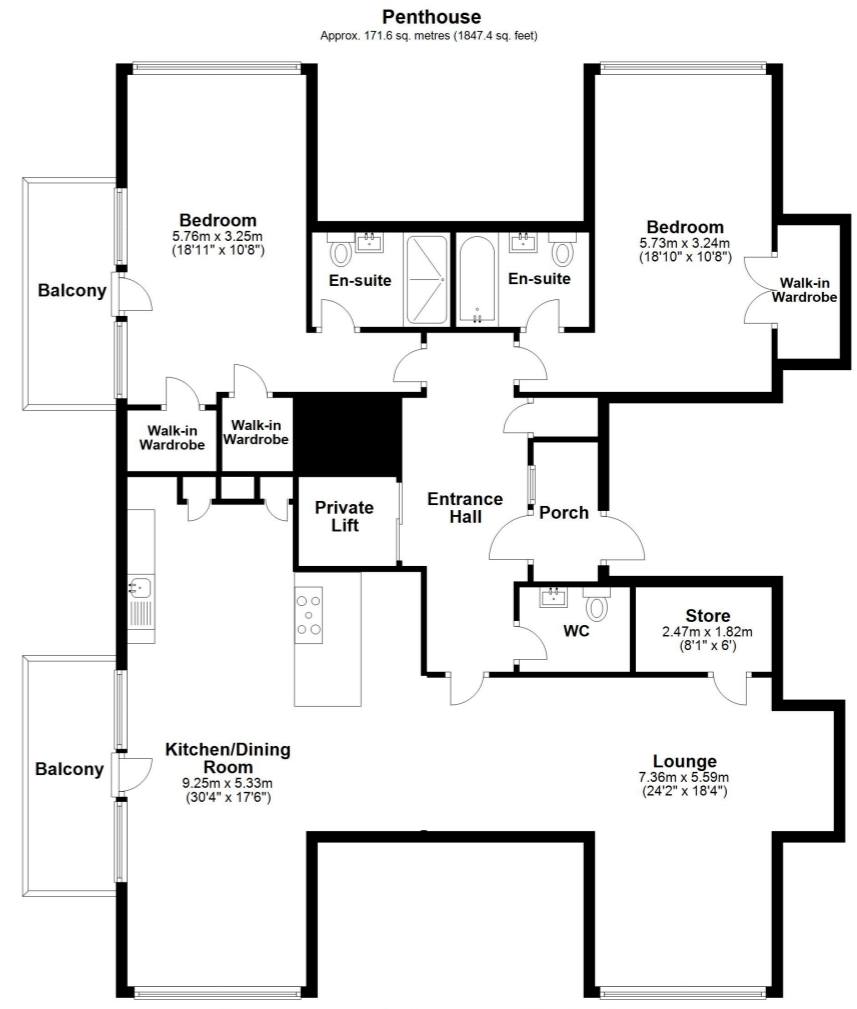
18' 10" x 10' 8" (5.74m x 3.25m)

Walk-In Wardrobe

En-Suite

Allocated Parking

The property has two allocated parking spaces and an EV charging point.



Total area: approx. 171.6 sq. metres (1847.4 sq. feet)

Whilst every attempt has been made to ensure the accuracy of the floor plan contained here, measurements of doors, windows, rooms and any other items are approximate and no responsibility is taken for any error, omission or mis-statement. This plan is for illustrative purposes only and should be used as such by any prospective purchaser. Plan produced using PlanUp.

