

FOR SALE

Lawford Road,
Grove Park, W4

Semi-Detached House
Grove Park

£1,500,000 fh

4  2  2 



**horton
andgarton**

SALES / LETTINGS / PROPERTY MANAGEMENT

hortonandgarton.co.uk | Sales 020 3989 6464 | Lettings 020 3989 5454
161 Chiswick High Road, London, W4 2DT



FOR SALE

Lawford Road,
Grove Park, W4

Semi-Detached House
Grove Park

£1,500,000 fh

4  2  2 



**horton
andgarton**

SALES / LETTINGS / PROPERTY MANAGEMENT

hortonandgarton.co.uk | Sales 020 3989 6464 | Lettings 020 3989 5454
161 Chiswick High Road, London, W4 2DT



FOR SALE

Lawford Road,
Grove Park, W4

Semi-Detached House
Grove Park

£1,500,000 fh

4  2  2 

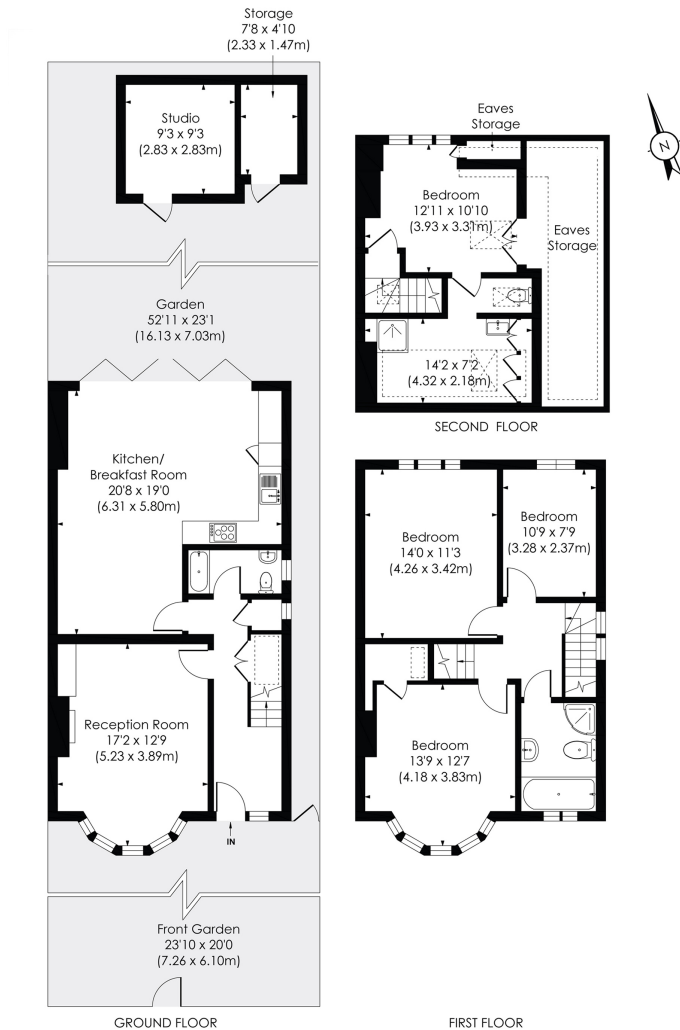


**horton
andgarton**

SALES / LETTINGS / PROPERTY MANAGEMENT

hortonandgarton.co.uk | Sales 020 3989 6464 | Lettings 020 3989 5454
161 Chiswick High Road, London, W4 2DT





LAWFORD ROAD, W4

Approx. Gross Internal Floor Area (Excl. Garden Studio and Storage)

1694 Sq'/157.38 SqM (Incl. RHH)

1501 Sq'/139.45 SqM (Excl. RHH)

Garden Studio and Storage: 98 Sq'/9.09 SqM

© Pixangle Property Marketing Ltd. info@pixangle.com Tel: 0208 870 2118

**horton
andgarton**

This floor plan has been prepared for the purpose of illustration only in accordance with the latest RICS code of measuring practice and is not to scale. All measurements and areas are approximate and whilst every effort has been made to ensure the accuracy of the plan contained here, no responsibility is taken for any error, omission or misstatement.



Semi detached family home | Four bedrooms - Two bathrooms | 1501 Sq' - 139.45 SqM | 52' garden with studio | EPC rating D | Grove Park



hortonandgarton.co.uk

Sales 020 3989 6464

Lettings 020 3989 5454

161 Chiswick High Road, London, W4 2DT