



6 Harebell Close

Widnes, WA8 9EA



0151 424 5100  
[info@mylerestates.com](mailto:info@mylerestates.com)





# Harebell Close

Widnes, WA8 9EA

£260,000

This link detached house, ideal for first-time buyers or families, is located in a sought-after area with excellent amenities and transport links, featuring three bedrooms, including a master with en-suite, a bright reception room with garden views, and a well-equipped kitchen.



MYLER&Co



## Ground Floor

Entrance Hall

Cloakroom

Lounge

4.93m x 3.23m (16' 2" x 10' 7")

Kitchen

3.53m x 2.8m (11' 7" x 9' 2")

## First Floor

Master Bedroom

4.4m x 2.64m (14' 5" x 8' 8")

En-Suite

Bedroom Two

4.1m x 2.57m (13' 5" x 8' 5")

Bedroom Three

2.64m x 2.18m (8' 8" x 7' 2")

Family Bathroom

External

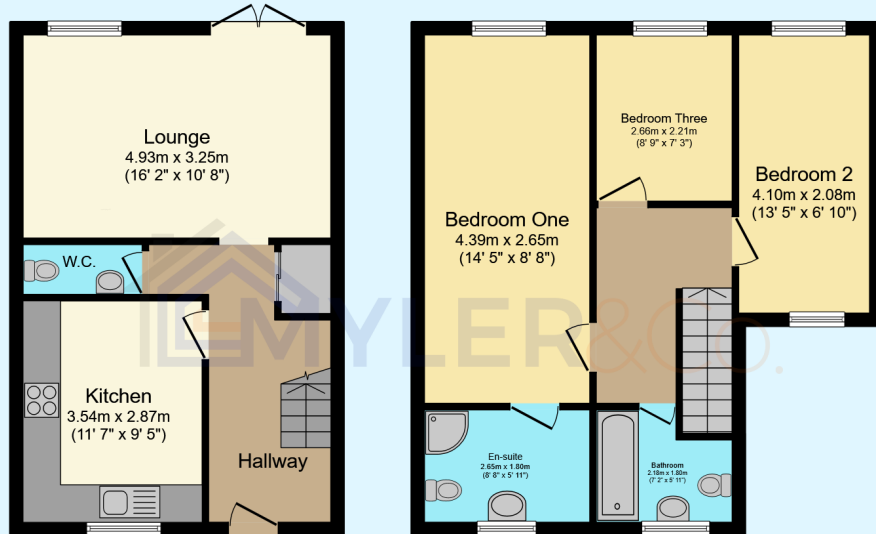
Front

Garage

Rear Garden



6 Harebell Close, Widnes, WA8 9EA



Ground Floor

Floor area 38.4 sq.m. (413 sq.ft.)

First Floor

Floor area 48.2 sq.m. (519 sq.ft.)

Total floor area: 86.6 sq.m. (932 sq.ft.)

This floor plan is for illustrative purposes only. It is not drawn to scale. Any measurements, floor areas (including any total floor area), openings and orientations are approximate. No details are guaranteed, they cannot be relied upon for any purpose and do not form any part of any agreement. No liability is taken for any error, omission or misstatement. A party must rely upon its own inspection(s). Powered by [www.Propertybox.io](http://www.Propertybox.io)



Myler & Co

77, Albert Road, Widnes, Cheshire, WA8 6JS

0151 424 5100

[info@mylerestates.com](mailto:info@mylerestates.com)