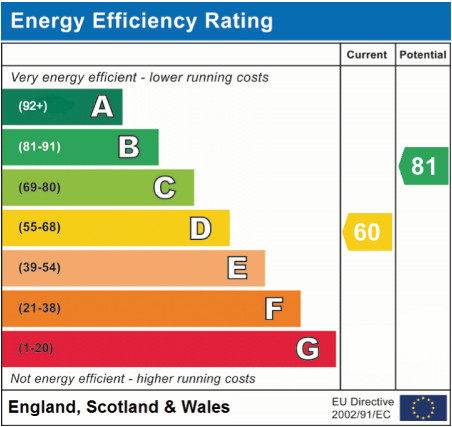
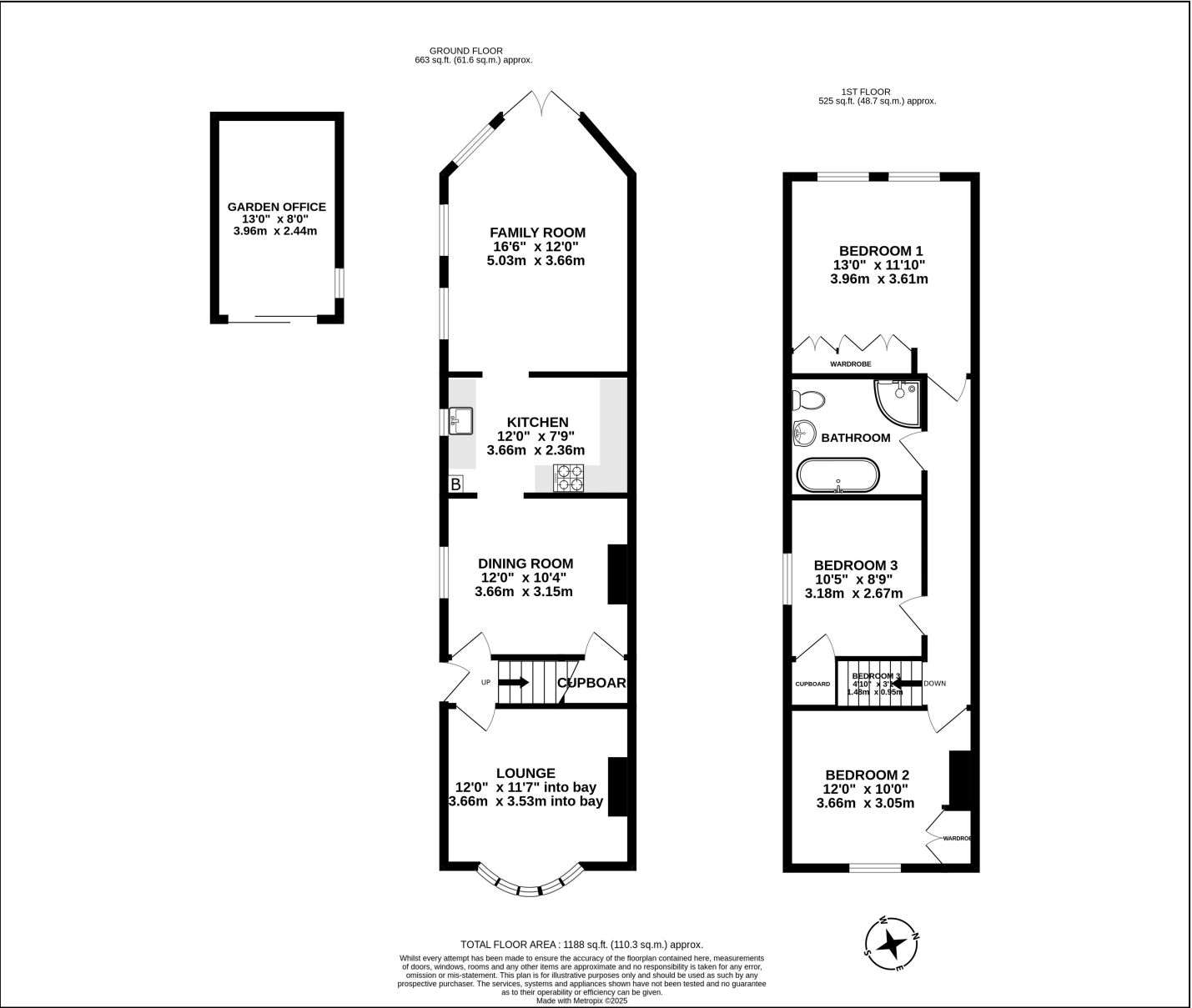


## Watersplash Road, Shepperton, TW17 0EE

**£599,950**



- Semi Detached Edwardian Cottage
- Three Double Bedrooms
- Two Reception Areas
- Garden Office
- Beautifully Presented Throughout
- Four Piece Bathroom
- Modern Kitchen
- 80ft Westerley Facing Garden



We have not tested the services or domestic appliances so we cannot verify that they are in working order. The buyer is advised to obtain verification from their solicitor or surveyor. There particulars form no part of any offer or contract and their accuracy cannot be guaranteed.