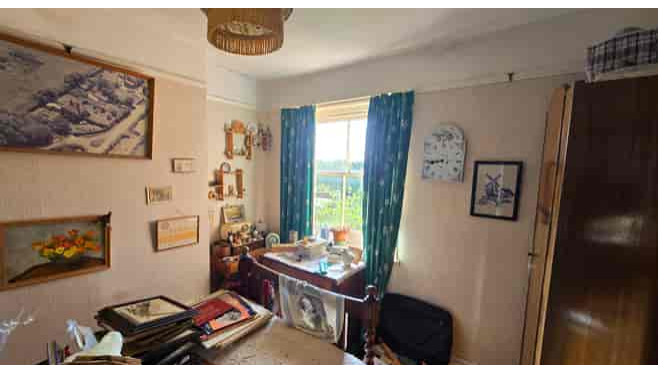




2 Thorne Farm Cottages, Ninfield Road,
Bexhill-on-Sea, East Sussex, TN39 5JP

£279,950

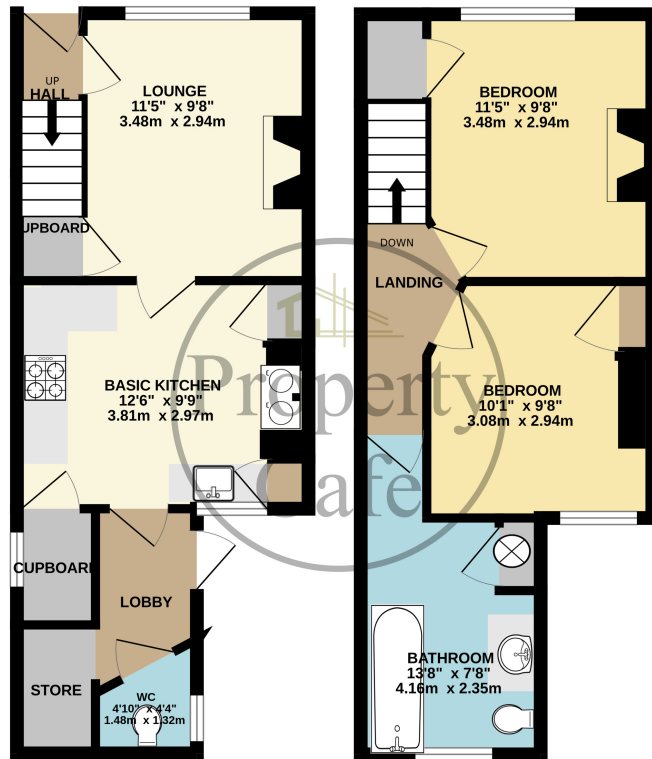


- Two Bed Mid Terrace Character Cottage
- In Need Of Complete Renovation
- Two First Floor Bedrooms
- Basic First Floor Bathroom
- Additional Ground Floor W.C
- Excellent Scope & Potential To Improve
- Kitchen With Aga Style Cooker
- Amazing Views To The Rear
- Single Garage Via Access Drive
- Sought After Semi-Rural Location
- Sold With No Onward Chain
- To Arrange to View Please Call 01424 224488



GROUND FLOOR
334 sq.ft. (31.0 sq.m.) approx.

1ST FLOOR
335 sq.ft. (31.1 sq.m.) approx.



TOTAL FLOOR AREA : 669 sq.ft. (62.2 sq.m.) approx.

Whilst every attempt has been made to ensure the accuracy of the floorplan contained here, measurements of doors, windows, rooms and any other items are approximate and no responsibility is taken for any error, omission or mis-statement. This plan is for illustrative purposes only and should be used as such by any prospective purchaser. The services, systems and appliances shown have not been tested and no guarantee as to their operability or efficiency can be given.
Made with Metropix (2024)