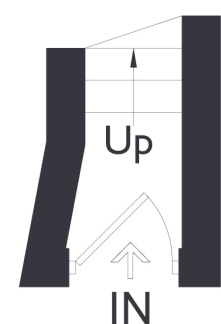
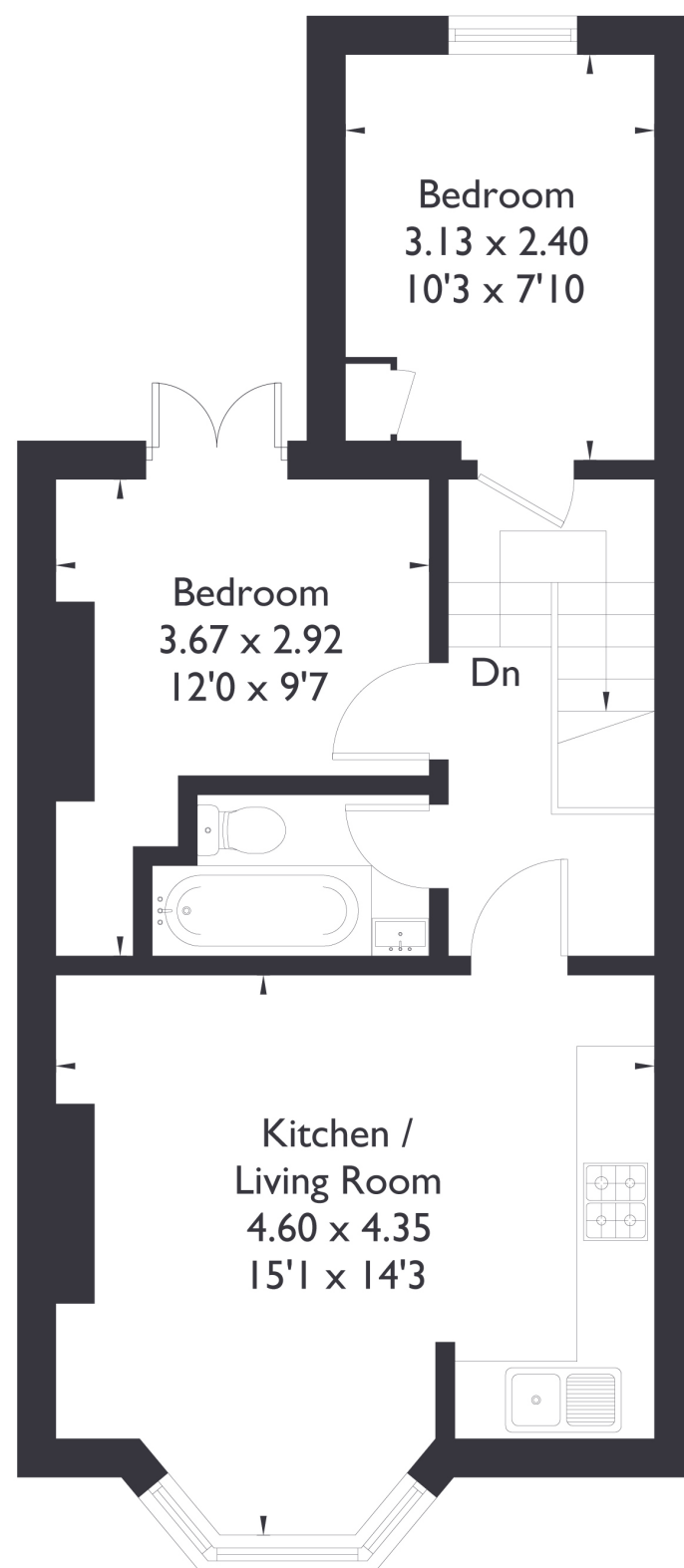


Lower Boston Road , W7

Approximate Floor Area = 45.4 sq m / 489 sq ft



Ground Floor



First Floor



2 BEDROOM FLAT

Lower Boston Road, W7

£399,000

Welcome to this two bedroom, one bathroom first-floor flat, perfectly positioned in the heart of Hanwell. This lovely home boasts a bright and airy open plan kitchen and living space, enhanced by a large bay window that fills the room with natural light.

FEATURES

- Two Bedrooms
- One Bathroom
- Open Plan Kitchen/ Living
- Hanwell Station (Elizabeth Line)
- Hanwell High Street Amenities
- St Mark's Primary School Catchment
- EPC Rating C.





## 2 BEDROOM FLAT

# Lower Boston Road, W7 £399,000

Both bedrooms are generously sized doubles, with the second bedroom featuring a Juliet balcony, adding to the property's charm.

With plenty of potential, this flat offers an excellent opportunity to make it your own. Ideally located just 10 minutes from Hanwell Station, the property also falls within the catchment area for the highly regarded St. Mark's Primary School, making it a fantastic choice for families and commuters alike.

EPC Rating C.

