



10 Park Terrace, Markinch, Glenrothes, Fife, KY7 6BN

Well-Presented, Two-Bedroom, Mid-Terrace Villa with Gardens & Driveway

Up to date price and viewing info at mov8realestate.com/property

éspsc rightmove[®] Zoopla
find your happy

Property Description

Well-presented, two-bedroom, mid-terrace villa, with private gardens and a driveway. Set in an established residential area, in the Markinch area, near Glenrothes, Fife.

Comprises an entrance hall, living/dining room, kitchen, two double bedrooms and bathroom.

Features include a modern fitted kitchen, gas central heating, three double-glazed doors, single-glazed windows, and a loft space.

There is low-maintenance landscaping to the front, incorporating a paved driveway, whilst a generous rear garden includes a lawn, patio and store shed.

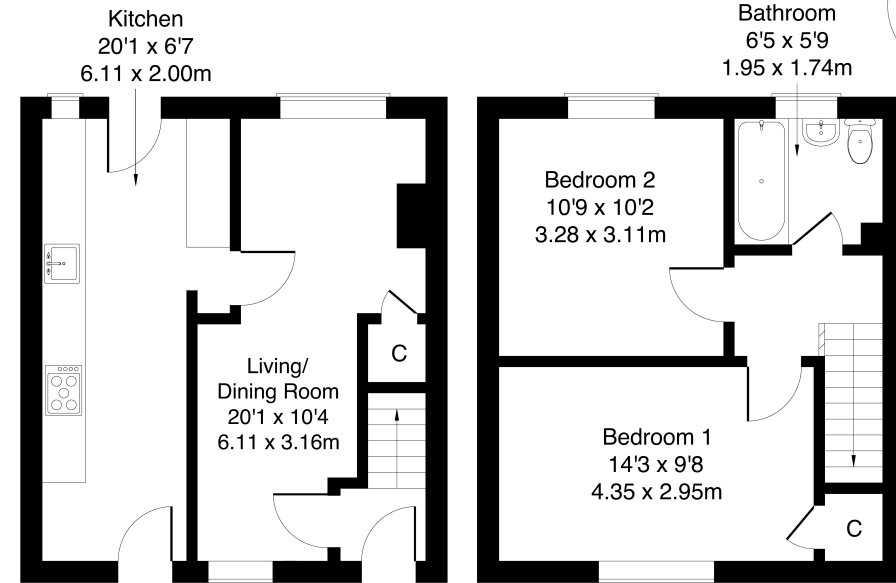
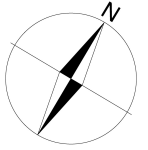
A bright entrance hall leads into a dual-aspect reception room, spanning the entire depth of the property and providing plenty of flexible space for both lounge and dining furniture. Conveniently leading off this bright versatile room, a kitchen, with front and rear external access, enjoys similar, generous dimensions. Fitted with wood-effect units and neutrally toned worktops and splashbacks, the kitchen provides room for casual dining. A range-style cooker, a stainless-steel canopy and an integrated microwave are included, whilst space is available for further appliances.

Set to either aspect, upstairs, two double bedrooms are well-proportioned, with the main, front-facing bedroom further benefiting from built-in cupboard storage. Completing the accommodation, a bathroom comprises a three-piece suite, a shower-over-bath and both tiled and panel splash walls.



10 Park Terrace, Markinch, Glenrothes KY7 6BN

Approximate Gross Internal Area: (700 sq ft - 65 sq m.)



Ground Floor

First Floor

Legal Disclaimer : Floor-plan and measurements are for illustrative guidance only, and not intended to form part of any contract.

Area Description

Markinch is a small residential town in the heart of Fife, two miles from Glenrothes, with excellent transport and commuter links by car to the A92, and linked to Dundee, Aberdeen and Edinburgh via rail from Markinch Railway Station. The town enjoys a range of local facilities including football, bowling, tennis, a

curling club, and parks, the largest of which is Balbirnie Park which includes Balbirnie House Hotel and golf course, with excellent walks through long-established deciduous woodland. The nearby town of Glenrothes has a large range of supermarkets, a retail centre, pubs, restaurants and a modern leisure centre.





Our Services

- Free pre-sale property valuations
- Great value fixed estate agency fees
- Extensive buyer matching database
- Purchase and sale conveyancing

Contact Us

0345 646 0208

sales@mov8realestate.com

www.mov8.com

Head Office

6 Redheughs Rigg, Edinburgh, EH12 9DQ

Glasgow Office

77 Renfrew Street, Glasgow, G2 3BZ



Estate Agents and Solicitors

