





Station Lane, Codnor, Ripley, Derbyshire DE5 9SL
£399,950 - Freehold

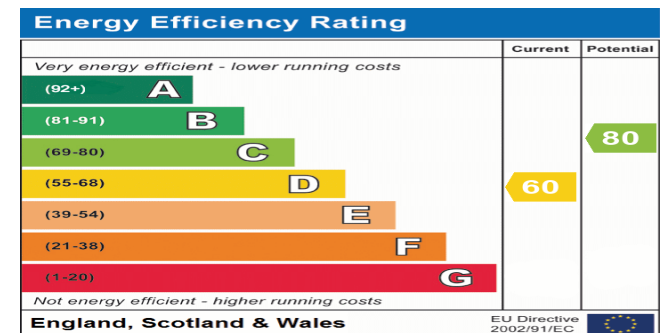


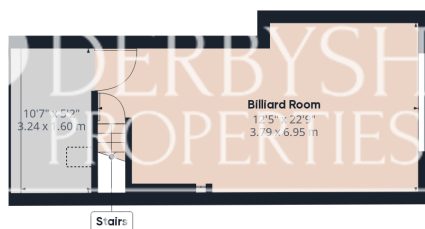
PROPERTY DESCRIPTION

Derbyshire Properties are pleased to present this substantial split level detached family home located within a non-state semi rural position. The property boasts numerous living spaces and well proportion bedrooms with sizable garden with open views. The property briefly comprises of:- lower ground - games room and storeroom. Ground floor - entrance hallway, bathroom, large master bedroom, extended lounge, dining room, conservatory, kitchen, attached garage incorporating utility room and downstairs toilet. First floor.- galleried landing, four bedrooms and a bathroom. externally the property is situated on a sizable plot with a well maintained low maintenance frontage, side driveway and attach garage. The rear garden mainly comprises of a lawn garden, sizable decking entertaining Terrace, vegetable plot all facing open views. We recommend the property will ideally suit families and an early internal inspection is truly essential to appreciate the accommodation on show.

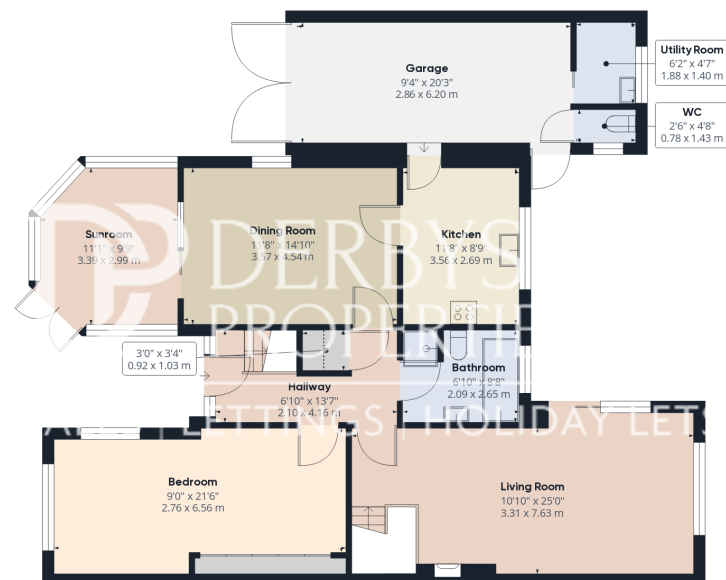
POINTS OF INTEREST

- Split Level Detached Family Home
- 4 Bedrooms, 3 Reception Rooms
- 2 Bathrooms
- Large Private Garden To Rear
- Semi-Rural Location
- Open Aspect With Views
- Ideal Family Purchase
- Driveway & Garage
- View Absolutely Essential!

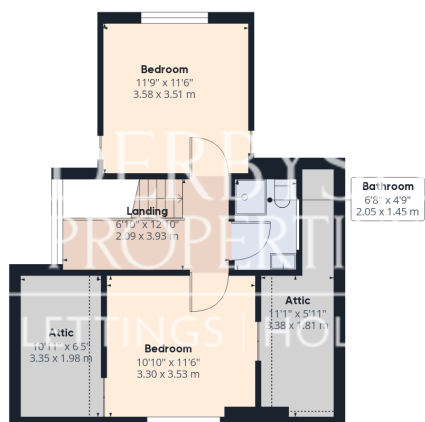




Floor -1



Ground Floor



Floor 1

Approximate total area⁽¹⁾

2102.21 ft²

195.3 m²

Reduced headroom

133.5 ft²

12.4 m²

(1) Excluding balconies and terraces

Reduced headroom

..... Below 5 ft/1.5 m

While every attempt has been made to ensure accuracy, all measurements are approximate, not to scale. This floor plan is for illustrative purposes only.

Calculations are based on RICS IPMS 3C standard.

GIRAFFE360