



21 Aspen Close, Staines-upon-Thames, Surrey. TW18 4SW.
1 Bedroom Terraced House - £280,000 Freehold

21 Aspen Close, Staines-upon-Thames, Surrey. TW18 4SW.

01784 451458

1 Bedroom Terraced House - £280,000 Freehold

SPACIOUS ONE BEDROOM FREEHOLD HOUSE SITUATED WITHIN MUCH SOUGHT AFTER PRIVATE CLOSE IDEALLY LOCATED WITHIN MOMENTS OF STAINES TOWN CENTRE & MAINLINE TRAIN STATION. The property benefits from a spacious lounge/diner, fitted kitchen, large double bedroom, modern white bathroom suite, garden to front and allocated parking. No Onward Chain. Viewings Highly Recommended!

Key Features

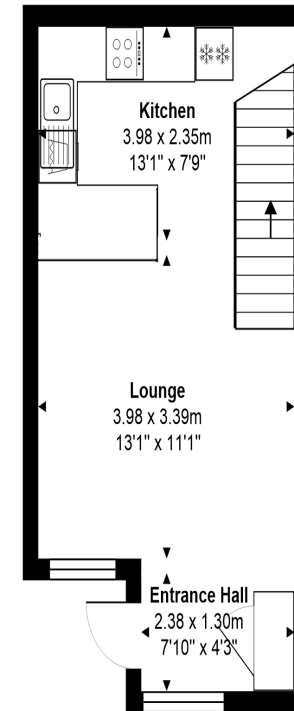
FREEHOLD

NO ONWARD CHAIN

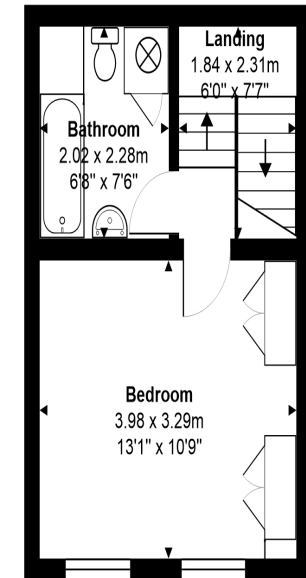
SOUGHT AFTER PRIVATE CLOSE

WITHIN MOMENTS OF STAINES TOWN CENTRE & MAINLINE TRAIN STATION

PARKING



Ground Floor



First Floor

Total Area: 50.0 m² ... 538 ft²

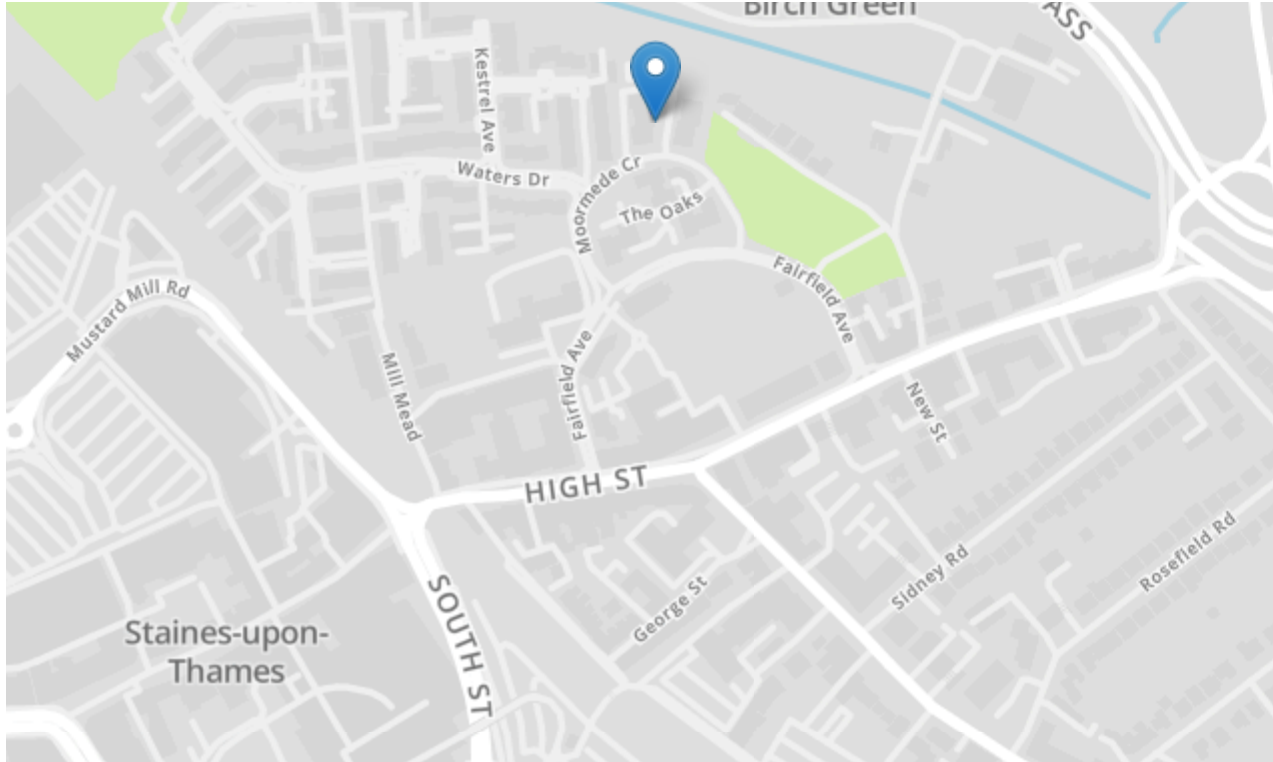
All measurements are approximate and for display purposes only.





21 Aspen Close, Staines-upon-Thames, Surrey. TW18 4SW.

gregory-brown.co.uk



Tenure	Freehold
Lease Term	
Ground Rent	
Service Charge	To Be Confirmed
Local Authority	
Council Tax	

We have prepared these property particulars as a general guide to a broad description of the property. They are not intended to constitute part of an offer or contract. We have not carried out a structural survey and the services, appliances and specific fittings have not been tested. All photographs, measurements, floorplans and distances referred to are given as a guide only and should not be relied upon for the purchase of carpets or any other fixtures or fittings. Lease details, service charges and ground rents (where applicable) and council tax are given as a guide only and should be checked and confirmed by your solicitor prior to exchange of contracts. The copyright of all details, photographs and floorplans remain exclusive to Gregory Brown.

