

26 Marlborough Court Earls Avenue

Folkestone
CT20 2PN

£250,000 FREEHOLD

FOR SALE WITH BURNAP + ABEL... Welcome to this stunning 2 bed penthouse located on Earls Avenue in the desirable West End of Folkestone. With a prime location just a short walk from the Folkestone Central Station, this property offers both convenience and luxury. Step inside to find a spacious lounge/diner with beautiful parquet flooring, perfect for entertaining guests or relaxing after a long day. The modern kitchen is equipped with all the necessary appliances for whipping up delicious meals, while the bathroom requires some modernisation. One of the highlights of this penthouse is the private south facing balcony, where you can enjoy your morning coffee or soak up the sun during warmer days. With its unbeatable location, a lift, potential to rent secure underground parking spaces, this property truly has it all. Don't miss out on your chance to call Marlborough Court home - schedule a viewing today!



Entrance Hall

Lounge/Dining Room

15' 7" x 10' 3" (4.75m x 3.12m)

Kitchen

11' 7" x 8' 9" (3.53m x 2.67m)

W.C

Bathroom

8' 4" x 5' 7" (2.54m x 1.70m)

Bedroom One

13' 1" x 10' 3" (3.99m x 3.12m)

Bedroom Two

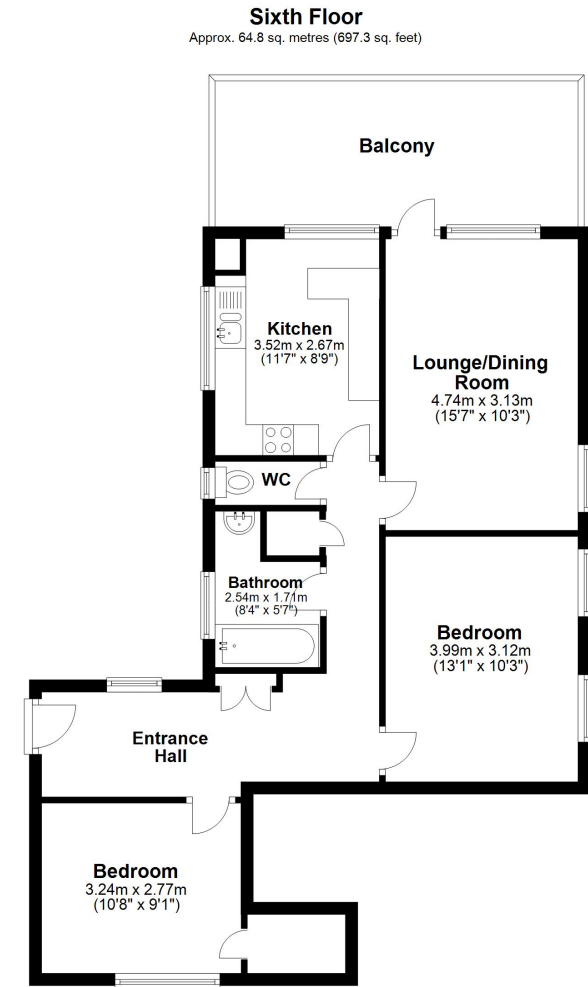
10' 8" x 9' 1" (3.25m x 2.77m)

Balcony

Lease + Service Charge Information

The lease is 999 years from 25 December 1965 leaving 941 years remaining.

We are awaiting confirmation of the service charges.



Total area: approx. 64.8 sq. metres (697.3 sq. feet)

Whilst every attempt has been made to ensure the accuracy of the floor plan contained here, measurements of doors, windows, rooms and any other items are approximate and no responsibility is taken for any error, omission or mis-statement. This plan is for illustrative purposes only and should be used as such by any prospective purchaser. Plan produced using PlanUp.

