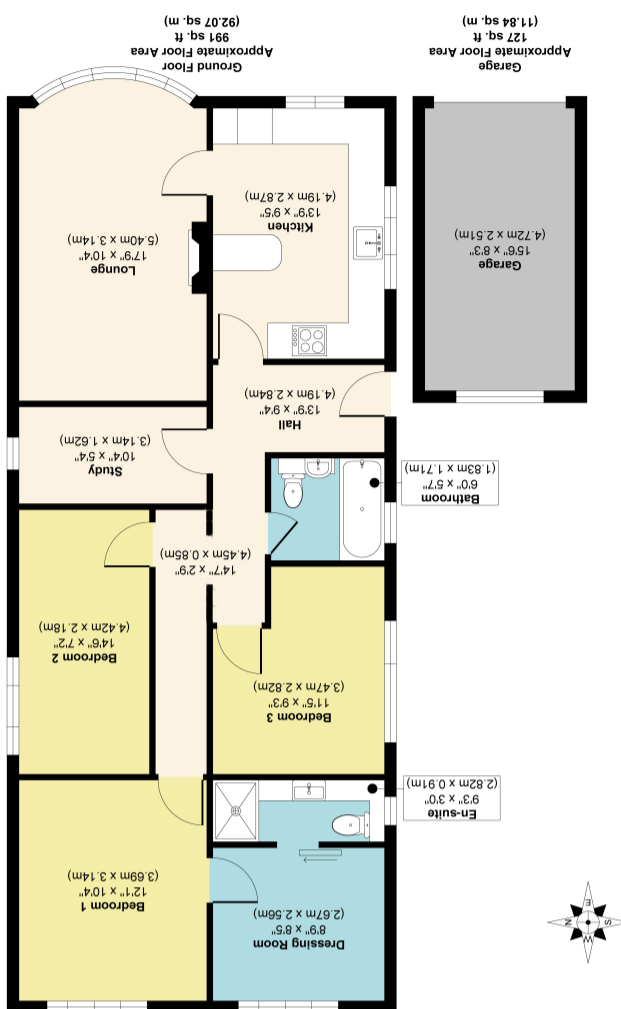


Approx. Gross Internal Floor Area 118 sq. ft / 103.91 sq. m (Including Garage)  
Illustration for identification purposes only, measurements are approximate, not to scale.  
Produced by Elements Property





## New Lane, Huntington, York YO32 9ND

A fantastic opportunity to purchase this skilfully extended detached bungalow in the highly desirable area of Huntington. Boasting an entrance hallway, smart country style kitchen with oak worktops and fitted appliances, large lounge with bright bay window and cosy log burner, home office / study, two double bedrooms, a modern three piece house bathroom and a master suite comprising double bedroom, large dressing room and an ensuite shower room.

Externally the property benefits from a gravelled front garden and a driveway for ample off street parking with a hedged border for privacy, a detached garage and an enclosed west facing rear garden complete with lawn and patio areas, perfect for entertaining with family and friends. Located within easy walking distance to the local amenities on Brockfield Park Drive and to Monks Cross and Vangarde, within easy access to regular bus routes, great schools and road links, we feel this property is likely to generate high interest levels and so early viewing is highly recommended.

- Extended
- Detached Bungalow
- Large Driveway
- Bay Window
- Local Amenities Nearby
- Ensuite and Dressing Room to Master
- Modern Bathroom
- Log Burner
- Garage
- West Facing Garden

Travelling from Monks Cross onto New Lane. At the mini roundabout the bungalow will be seen to the left and can be identified by our for sale sign.

Huntington is ideal for the commuters travelling to York and also the A1237 leading to the A59 or A64. Huntington has a primary school and also Huntington Secondary a reputable school in the area. For shopping Monks Cross, and Vangarde Retail Parks are in the vicinity with various shops and supermarkets.

