

100 Kingsway, North Finchley, N12 0EN

O.I.R.O £550,000

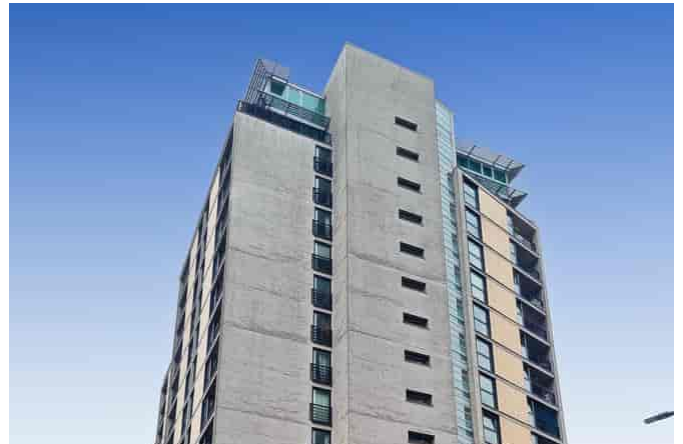
A stunning two bedroom, two bathroom split-level penthouse apartment with panoramic views over London. Benefits include a jacuzzi bath, lift, balcony, parking and concierge. Conveniently located for North Finchley's shopping & transport amenities and within 0.5 miles of Woodside Park tube station. Chain free. Council Tax Band F.



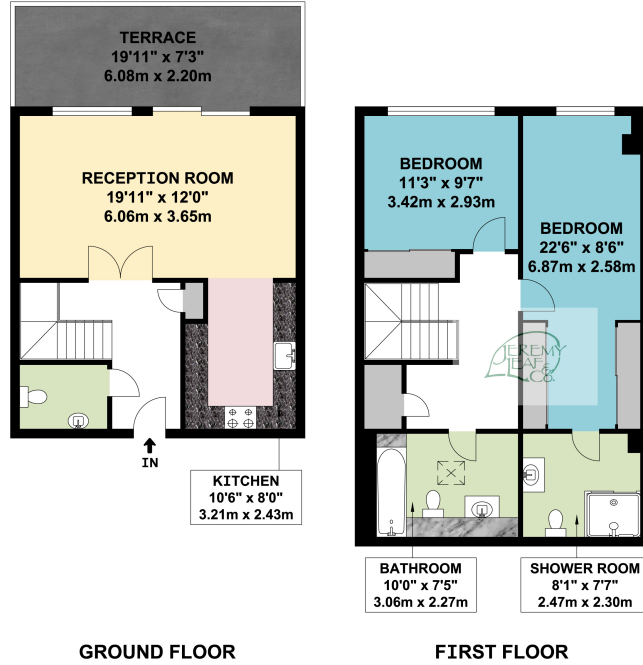
- Open Plan Reception/Kitchen
- Two Bathrooms (One En-suite)
- Lift
- Secure underground parking
- 0.5 miles to Woodside Park Tube Station
- Ground Rent £300 p.a.
- Two Bedrooms
- Guest W.C.
- Balcony
- Concierge
- Long Lease (106 years)
- Service Charge £5,750 p.a.







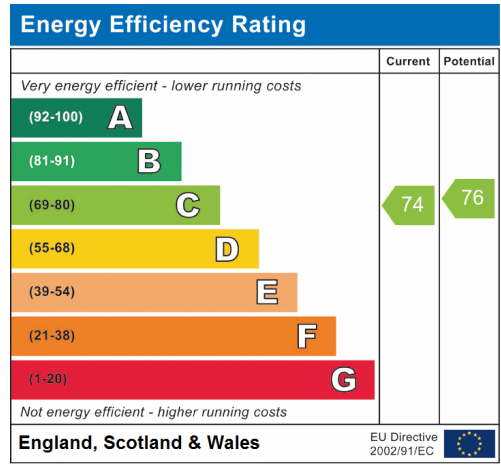
**KINGSWAY
LONDON N12**



GROUND FLOOR **FIRST FLOOR**

APPROX. GROSS INTERNAL FLOOR AREA 1050.77 SQ. FT / 97.62 SQ. M
 APPROX. GROSS INTERNAL FLOOR AREA INCLUDING THE TERRACE 1198.99 SQ. FT / 111.39 SQ. M

WHILST EVERY ATTEMPT HAS BEEN MADE TO ENSURE THE ACCURACY OF THE FLOOR PLAN CONTAINED HERE, MEASUREMENTS OF DOORS, WINDOWS, ROOMS AND ANY OTHER ITEMS ARE APPROXIMATE AND NO RESPONSIBILITY IS TAKEN FOR ANY ERROR, OMISSION, OR MIS-STATEMENT. THIS PLAN IS FOR ILLUSTRATIVE PURPOSES ONLY AND SHOULD BE USED AS SUCH, BY ANY PROSPECTIVE PURCHASER. FLOOR PLANS ARE NOT DONE TO "SCALE".



When you are considering a property we recommend that you instruct a surveyor to ensure the property is in sound structural order and that equipment, fitting, services, etc are in working order and/or fit for their purpose and a solicitor to verify tenure and title of the property. We can give no assurances in this regard nor can we verify accuracy of measurements or distance.

Jeremy Leaf & Co., for themselves and for their client, whose agent they are, give notice that:

- Under the terms of the Anti Money Laundering Act 2007, intending purchasers will be asked to produce identification documentation at a later stage and we would ask for your cooperation in order that there will be no delay in agreeing the sale.
- These particulars do not constitute any part of an offer or a contract.
- All statements contained in these particulars are made without responsibility on the part of Jeremy Leaf & Co or their client.
- None of the statements contained in these particulars is to be relied upon as a statement, warranty or representation of fact.
- Please note we have not tested the services or any of the equipment or appliances in this property, accordingly we strongly advise prospective buyers to commission their own survey or service reports before finalising their offer to purchase.
- Any intending purchaser or tenant must satisfy himself by inspection, or otherwise as to the correctness of each of the statements contained in these particulars.
- No person in the employment of Jeremy Leaf & Co has any authority to make any representation or warranty whatsoever in relation to this property.
- Unless otherwise stated, all prices and rents are quoted exclusive of Value Added Tax (VAT). Any intending purchasers or lessees must satisfy themselves independently as to the incidents of VAT in respect of any transaction.
- This document is not intended for distribution and may not be reproduced or further distributed or published for any purpose. In particular, any tenants detailed in this property should not be approached without prior written permission.