







- Modern Semi-Detached Home
- Good Size Living Room
- Fully Equipped Kitchen
- Three Bedrooms
- Modern Bathroom
- Private Garden
- Off Road Parking

### Description

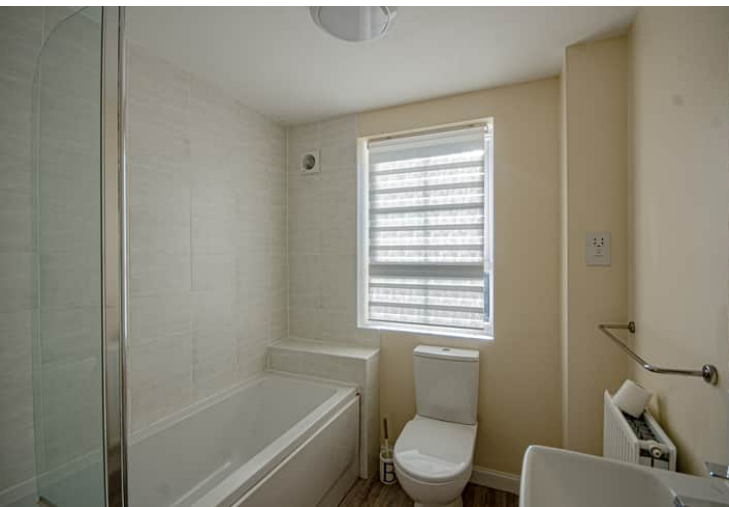
A modern, semi-detached family home in popular location with good local amenities at hand. Gas central heating and PVCu double glazing. Entrance hall, cloakroom/WC, fully equipped kitchen, good size living room, first floor landing, three bedrooms and bathroom. Externally there is a private rear garden and a driveway with parking for at least two cars. The property is immediately available and restrictions apply.



**Location**  
**Tenure**

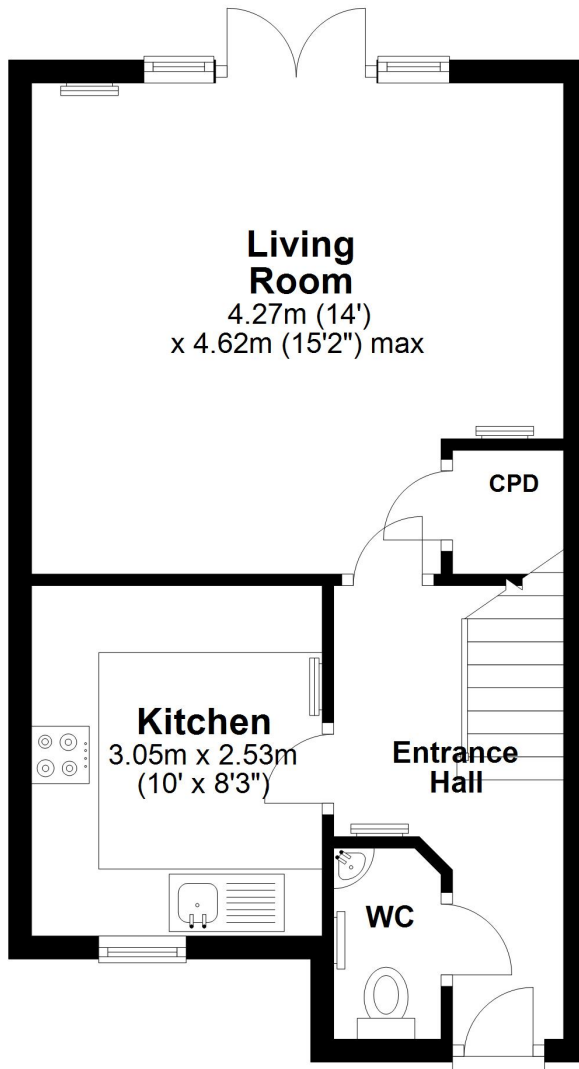
**EPC Rating: C**

**Important Notes**  
Type Here



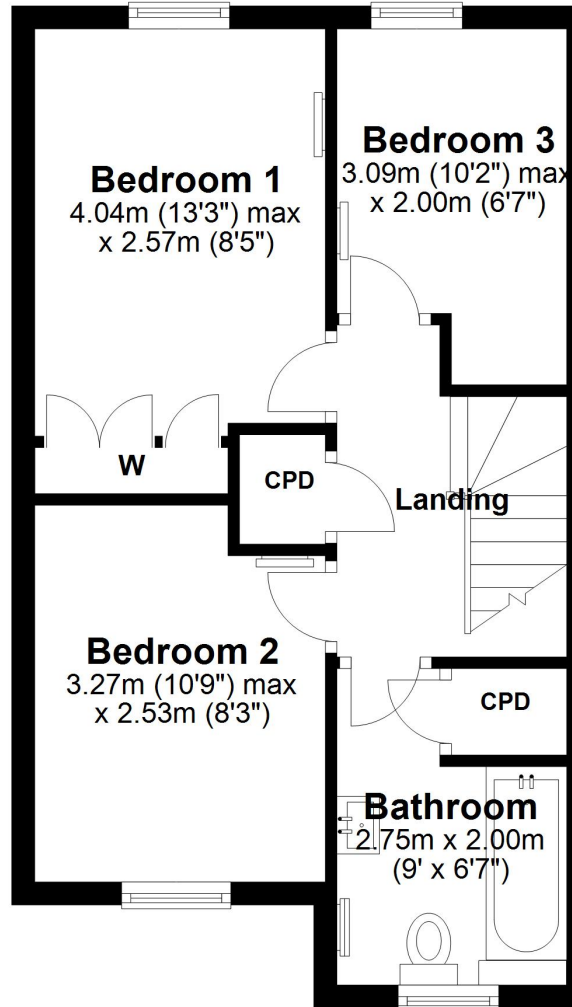
## Ground Floor

Approx. 36.0 sq. metres (388.0 sq. feet)



## First Floor

Approx. 36.2 sq. metres (389.7 sq. feet)



Total area: approx. 72.3 sq. metres (777.8 sq. feet)