



Offers Over £225,000
Plot 2



DELMOR

01333 421 816

leven@delmorestateagents.co.uk



Plot 2

Kinnesswood, Fife, KY13 9HN

A FABULOUS EXTENDED BUILDING PLOT boasting the best of locations and offering simply stunning views over beautiful open countryside. Nestled in the ideal corner of a development that will total five prestigious properties, the plot has been extended to allow more garden ground. Full planning is in place for a substantial EXECUTIVE FAMILY HOME. It is understood the services will be provided.



Proposed South-West Elevation



Proposed North East Elevation

Scale 1:50
0m 1m 2m 3m 4m 5m



SONIC TAPE

All measurements have been taken using a sonic tape measure and therefore, may be subject to a small margin of error.

MEASUREMENTS

All measurements are approximate.

APPLIANCES/SERVICES

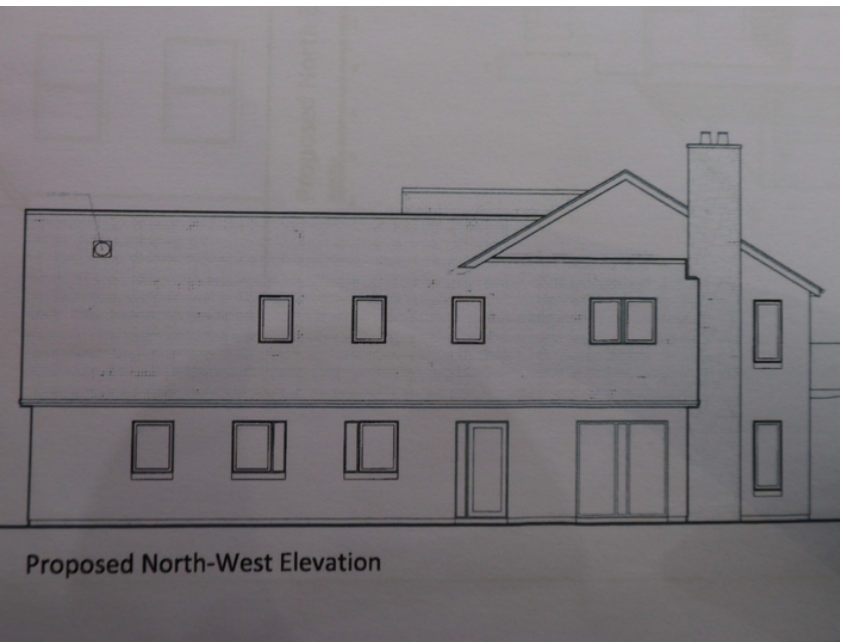
The mention of any appliances and/or services within these Sales Particulars does not imply they are in fully working order.

MORTGAGE & FINANCIAL ADVICE

Qualified Mortgage and Financial Consultants can provide you with up to the minute information on many of the rates available. To arrange an appointment telephone this office. **YOUR HOME IS AT RISK IF YOU DO NOT KEEP UP REPAYMENTS ON A MORTGAGE OR OTHER LOANS SECURED ON IT.** Full written quotation available on request. A suitable life policy may be required. Loans are subject to status. Minimum age 18.

FREE VALUATION

How much is your property worth?. We can provide you with the answer. We offer a free valuation service without cost or obligation. Please call this office for an appointment.







52 Commercial Street, Leven, KY8 4LA
 01333 421 816
 leven@delmorestateagents.co.uk