

FOR SALE

£299,950 Leasehold



WOODHOUSE
PROPERTY CONSULTANTS

56 Bury Green Road, WALTHAM CROSS, Hertfordshire. EN7 5AG

Head Office
7, Turners Hill, Cheshunt, Waltham Cross, EN8 8NQ

01992 637777
info@woodhouseproperty.co.uk

ABOUT THE PROPERTY

(Fresh photos pending, please excuse Homeowner till then, details below). OFFERED CHAIN-FREE.

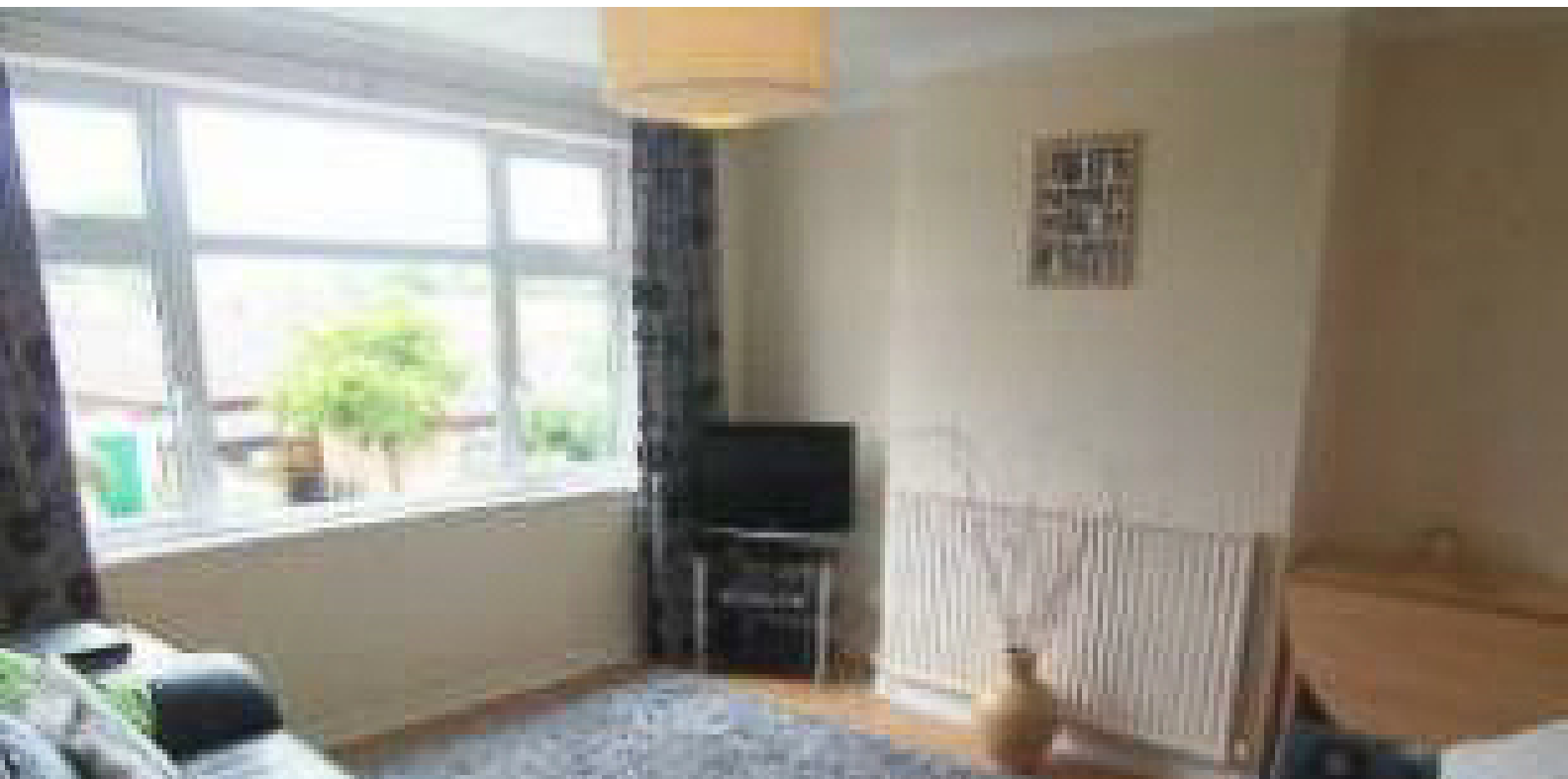
Woodhouse are pleased to offer this very well-presented maisonette in a desirable part of West Cheshunt. This 1st floor property comes with its own front door and benefits from its own large rear garden approx 70ft.

This home comprises of fitted kitchen, 2 x double bedrooms, gas central heating and double-glazed windows. The maisonette is within easy reach of amenities. A short drive away are the amenities of Cheshunt, Goffs Oak and Cuffley. Nearby train stations include Cheshunt, Cuffley and Theobalds Grove - all with direct links to London.

With a super long lease and low service charges this lovely maisonette with large garden is ideal for a First-Time Buyer or BTL Investor. Contact Woodhouse today to arrange a viewing.

FEATURES

- NO ONWARD CHAIN
- Maisonette
- 2 bedrooms
- 1st Floor
- Large garden approx. 70 feet
- Fitted Kitchen
- Low service charges
- Popular West Cheshunt neighbourhood
- Ideal for First-Time Buyer or BTL Investor
- 933 year lease
- Contact Woodhouse today



ROOM DESCRIPTIONS

Photos

The current residents have asked us to forego current photos as they are in the middle of a re-arrange. We have had to source archived photos which although not of quality will hopefully give you at least a guide of the layout. Thank you for your patience while we await updated photos!





Head Office
01992 637777
info@woodhouseproperty.co.uk
7, Turners Hill, Cheshunt, Waltham Cross, EN8 8NQ