

Martins Grove, Worle, Weston-Super-Mare, Somerset. BS22 6EL

£280,000 Freehold

FOR SALE



www.housefox.co.uk



01934 314242
01275 404601
01278 557700
sales@housefox.co.uk

PROPERTY DESCRIPTION

HOUSE FOX ESTATE AGENTS PRESENTS.....Nestled just off Worle High Street, this charming older-style house awaits. Situated in a peaceful cul-de-sac, the property boasts convenience with a plethora of shops just moments away.

Upon entry, you're greeted by an inviting open-plan hallway leading to the kitchen. The spacious lounge provides a cosy retreat, while the adjacent dining room, complete with double doors opening onto the great size garden, offers an ideal space for entertaining guests or simply enjoying alfresco dining. With three bedrooms, a convenient shower room, a driveway leading to the garage, and the added comforts of gas central heating and double glazing, this home provides both practicality and comfort. Outside, the generous garden beckons for outdoor gatherings and relaxation, making it a perfect retreat for enjoying the outdoors.

FEATURES

- WALK THROUGH 360 VIDEO TOUR AVAILABLE
- Semi-detached house
- Set just off Worle High Street
- Lovely size garden
- 3 bedrooms
- Lounge & dining room
- Driveway to the Garage
- In need of a bit of TLC
- Gas central heating
- EPC-tbc



ROOM DESCRIPTIONS

Main front door to the hallway

Hallway:

The hallway is open planned to the kitchen.....Stairs to the first floor, door to the lounge

Kitchen:

7.78m x 2.72m (25' 6" x 8' 11") (this measurement is the hallway and kitchen) Sink unit, floor and wall units, double glazed window, built in oven and hob, opening to dining room

Living room:

4.19m x 3.70m (13' 9" x 12' 2") Double glazed window, radiator

Dining room:

3.32m x 3.22m (10' 11" x 10' 7") Radiator, double glazed double doors to the garden

First floor landing:

Cupboard

Bedroom 1:

3.77m x 3.18m (12' 4" x 10' 5") Radiator, double glazed window

Bedroom 2:

3.73m x 3.66m (12' 3" x 12' 0") Radiator, double glazed window

Bedroom 3:

Radiator, double glazed window

Bathroom:

Shower cubicle, was hand basin basin, double glazed window, heated towel rail

Garage & parking

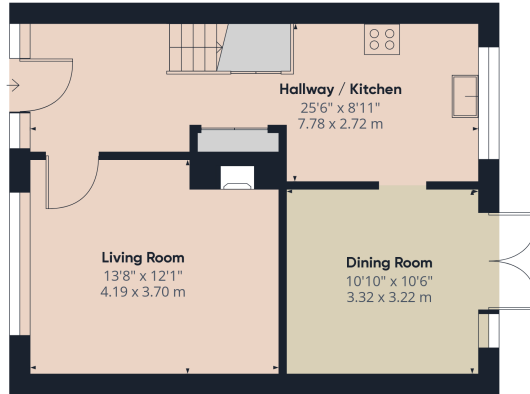
The driveway leads to the SINGLE GARAGE

Rear garden:

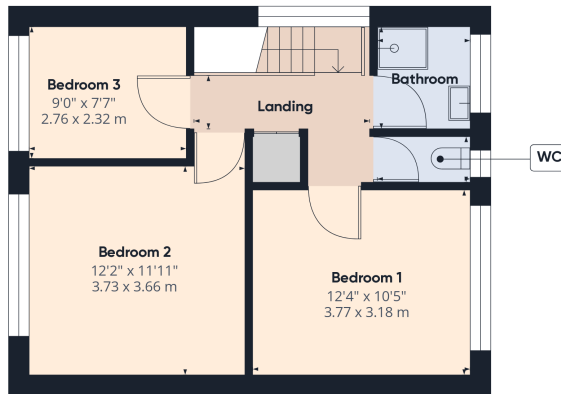
A lovely size garden which is mainly laid to lawn, with a nice size decked area, and a under cover area, perfect for a hot tub area, or alfresco dining



FLOORPLAN & EPC



Floor 0



Floor 1



Approximate total area⁽¹⁾
938.95 ft²
87.23 m²

(1) Excluding balconies and terraces

While every attempt has been made to ensure accuracy, all measurements are approximate, not to scale. This floor plan is for illustrative purposes only.

GIRAFFE360