



Greencroft Gardens, South Hampstead, NW6

£725,000



Greencroft Gardens, South Hampstead, NW6

An exciting opportunity to purchase an unmodernised garden apartment on one of South Hampstead's premier roads. This apartment has been in the same family for close to 50 years and benefits from a share of the freehold, "first come first serve" off street parking and direct access to a communal garden.

This flat is being sold with enormous potential including the possibility of converting it into a two bedroom, two bathroom apartment (subject to the necessary consent).

Greencroft Gardens is perfectly positioned just 0.5 miles from Finchley Road Underground (Metropolitan Line & Jubilee Line) and 0.5 miles from West Hampstead Underground (Jubilee Line), Overground and Thameslink.

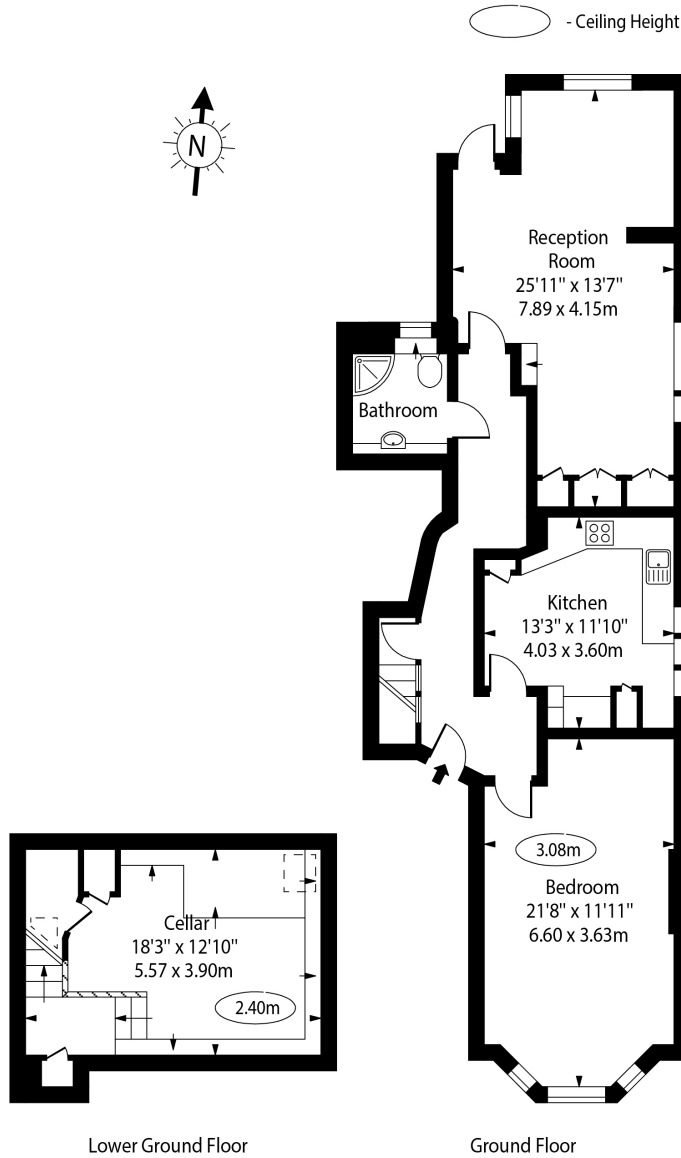
Features

- Garden Apartment
- Direct Access To Communal Garden
- Sold With Enormous Potential
- First Come First Serve Off Street Parking
- Located Within A Gorgeous Period Building
- Cellar Storage Space
- Ground Floor Apartment
- Unmodernised Apartment



**Greencroft Gardens,
South Hampstead,
NW6**

Greencroft Gardens, NW6



Approx Gross Internal Area 1096 Sq Ft - 101.78 Sq M
(Including Cellar)

Approx Gross Internal Area 856 Sq Ft - 79.52 Sq M
(Excluding Cellar)

For Illustration Purposes Only - Not To Scale. Floor Plan by www.nogaphotostudio.com Ref: No.44728

This floor plan should be used as a general outline for guidance only. Any intending purchaser or lessee should satisfy themselves by inspection, searches, enquiries and full survey as to the correctness of each statement. Any areas, measurements or distances quoted are approximate and should not be used to value a property or be the basis of any sale or let.