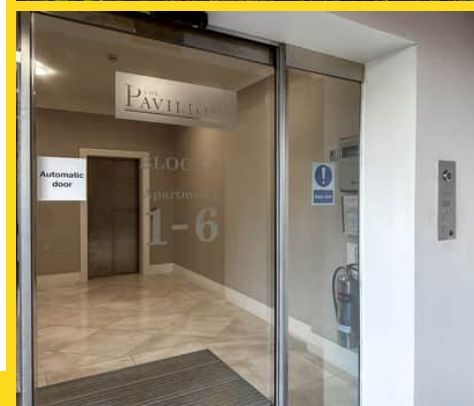




## Apartment 5, The Pavilions, Fairway Drive, Ramsey, Isle of Man. IM8 2BA

Stunning top floor apartment within the highly regarded Pavilions, an exclusive development of just 15 apartments



**£399,950 Leasehold**

## PROPERTY DESCRIPTION

---

**SITUATION** From Parliament Square turn into Brookfield Avenue past The Spar store. Continue up the hill past the entrance into Ramsey Golf Club and take the next right onto Fairway Drive and immediate right into The Pavilions, proceed through the gates and the two allocated parking spaces are the first on the left hand side.

This immaculate top floor apartment within The Pavilions development in Ramsey, Isle of Man, offers luxurious living in a stunning setting. The highlight of the property is undoubtedly the spacious lounge/diner, which measures over 30 feet long. This bright and airy space is perfect for both relaxing and entertaining, with plenty of room for a dining area and comfortable seating. The modern kitchen, seamlessly integrated into the living space, is beautifully designed and well-equipped with top-of-the-line appliances. From this exceptional living area, residents can enjoy breath-taking views towards The Albert Tower, adding an element of charm and character to the space.

The apartment comprises two well-appointed bedrooms, each offering a tranquil retreat. The master bedroom boasts an en suite shower room, providing privacy and convenience. The second bedroom, serviced by a guest bathroom, offers ample space and is versatile enough to be used as a home office or study if desired. With high-quality fixtures and finishes throughout, this top floor apartment offers truly luxurious living in a desirable location. The Pavilions is a gated community which makes it an ideal lock and leave property, residents can also enjoy direct access onto Ramsey golf course.

## FEATURES

---

- Immaculate Penthouse Apartment
- Convenient Central Location
- Direct Access to Ramsey Golf Course
- Lift Access to All Floors
- Superior Acoustic and Thermal Insulation
- 34ft Lounge/Diner with Triple Aspect Windows
- Superb Fitted Kitchen with Granite Worktops
- Master Bedroom with En Suite Shower Room
- Two Allocated Parking Spaces





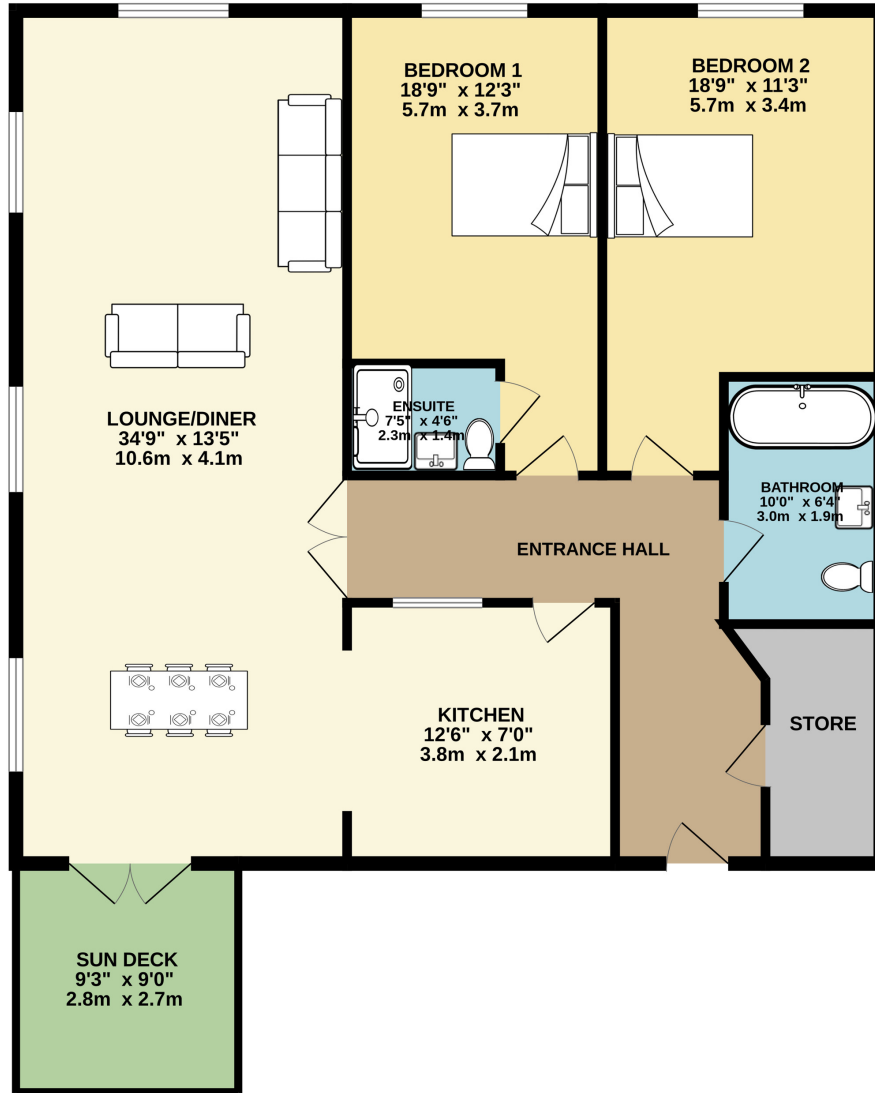
## Property Images

---



# FLOORPLAN

## GROUND FLOOR



Whilst every attempt has been made to ensure the accuracy of the floorplan contained here, measurements of doors, windows, rooms and any other items are approximate and no responsibility is taken for any error, omission or mis-statement. This plan is for illustrative purposes only and should be used as such by any prospective purchaser. The services, systems and appliances shown have not been tested and no guarantee as to their operability or efficiency can be given.  
Made with Metropix ©2024

**DISCLAIMER:** Whilst Manxmove Ltd believe that these details are correct, neither Manxmove Ltd or their clients guarantee their accuracy in any way. Consequently, these details are not to be used to form part of any legally binding contract. Prospective purchasers or tenants are advised to visit this property to satisfy themselves as to the correctness of these details. Please note, we use wide angle camera lenses in order to show as much of each room as possible. This is not intended to mislead any prospective purchasers or tenants in any way and an honest verbal description is always available prior to viewing if required.