

# Lower Woodcock Street

Castle Cary, BA7 7BH

COOPER  
AND  
TANNER



**£300,000 Freehold**

A quaint three bedroom cottage in the heart of Castle Cary. Viewing highly recommended and offered with no onward chain.



# Lower Woodcock Street Castle Cary BA7 7BH

 3  1  1 EPC D

## £300,000 Freehold

### DESCRIPTION

Introducing this charming three-bedroom mid-terrace cottage nestled in the heart of Castle Cary. A perfect blend of classic character and modern comfort, this home offers a delightful living experience.

As you enter, you'll immediately notice the inviting living room and snug room, providing a cosy space that welcomes you with its warm ambiance and original features, creating an ideal spot for relaxation.

The heart of the home is the stunning modern kitchen, adorned with skylights that flood the space with natural light, creating an airy and inviting atmosphere. The sleek and functional kitchen boasts contemporary cabinetry and ample countertop space making it a great space for culinary enthusiasts and a hub for social interactions.

The cottage offers a modern bathroom situated downstairs as well as benefitting from an upstairs W/C designed to provide some convenience. With stylish fixtures, tasteful tiling, and modern amenities, these bathrooms allow for easy maintenance and a quality look.

Throughout the home, a carefully curated neutral interior colour palette sets the tone for a subdued living environment. This provides a versatile backdrop for any

design style and allows for personal touches to be added with ease. On the first floor you will find three bedrooms that provide plenty of space and can accommodate for the needs of its occupiers.

One of the highlights of the cottage is the rear garden. This outdoor space offers a perfect blend of landscaped areas and open spaces, ideal for hosting gatherings, gardening, or simply unwinding amidst nature's beauty.

Furthermore, this property comes with the advantage of no onward chain, streamlining the buying process and ensuring a smoother transition for the new homeowners. In summary, every aspect of this home has been thoughtfully presented to offer a lifestyle of comfort and convenience. Don't miss the opportunity to make this delightful cottage your own.

### TENURE

Freehold

### COUNCIL TAX BAND

B





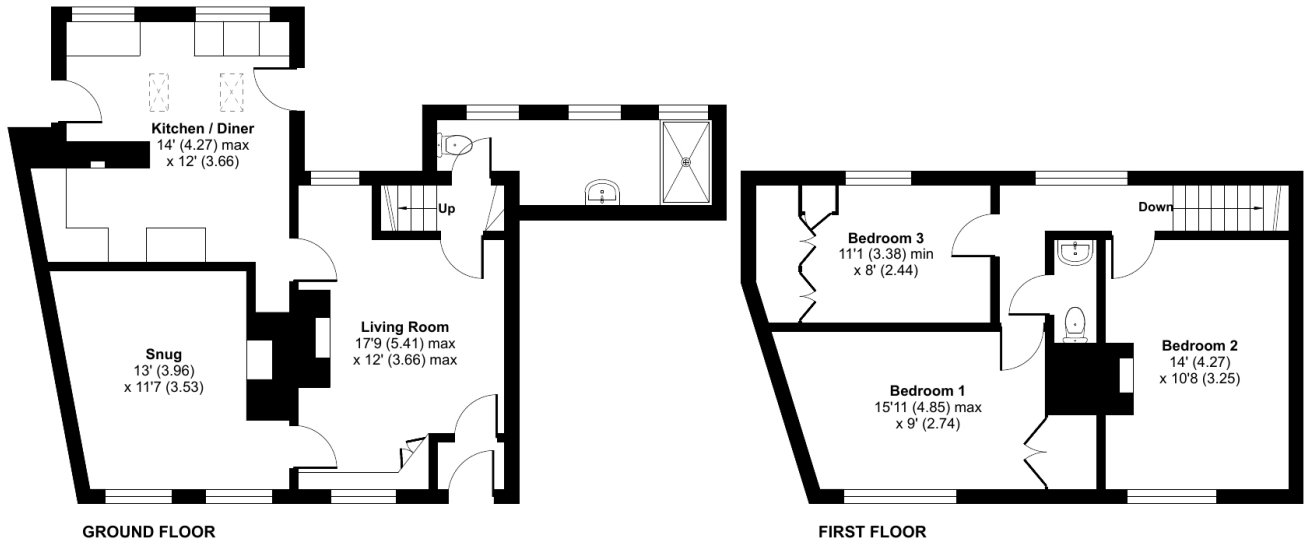




## Lower Woodcock Street, Castle Cary, BA7

Approximate Area = 1184 sq ft / 110 sq m

For identification only - Not to scale



Floor plan produced in accordance with RICS Property Measurement Standards incorporating International Property Measurement Standards (IPMS2 Residential). © nitchecom 2023. Produced for Cooper and Tanner. REF: 1025020

### CASTLE CARY OFFICE

Telephone 01963 350327

Fore Street, Castle Cary, Somerset BA7 7BG

[castlecary@cooperandtanner.co.uk](mailto:castlecary@cooperandtanner.co.uk)

**COOPER  
AND  
TANNER**

Important Notice: These particulars are set out as a general outline only for the guidance of intended purchasers and do not constitute, nor constitute part of, an offer or contract. All descriptions, dimensions, reference to condition and necessary permissions for use and occupation, warranties and other details are given without responsibility and any intending purchasers should not rely on the measurements or representations of fact but must satisfy themselves by inspection or otherwise as to the correctness of each of them.

