



BarrettMove



**6 Churchill Drive, Marlow, Buckinghamshire SL7 1TW
Offers in Region of £450,000 - Freehold**

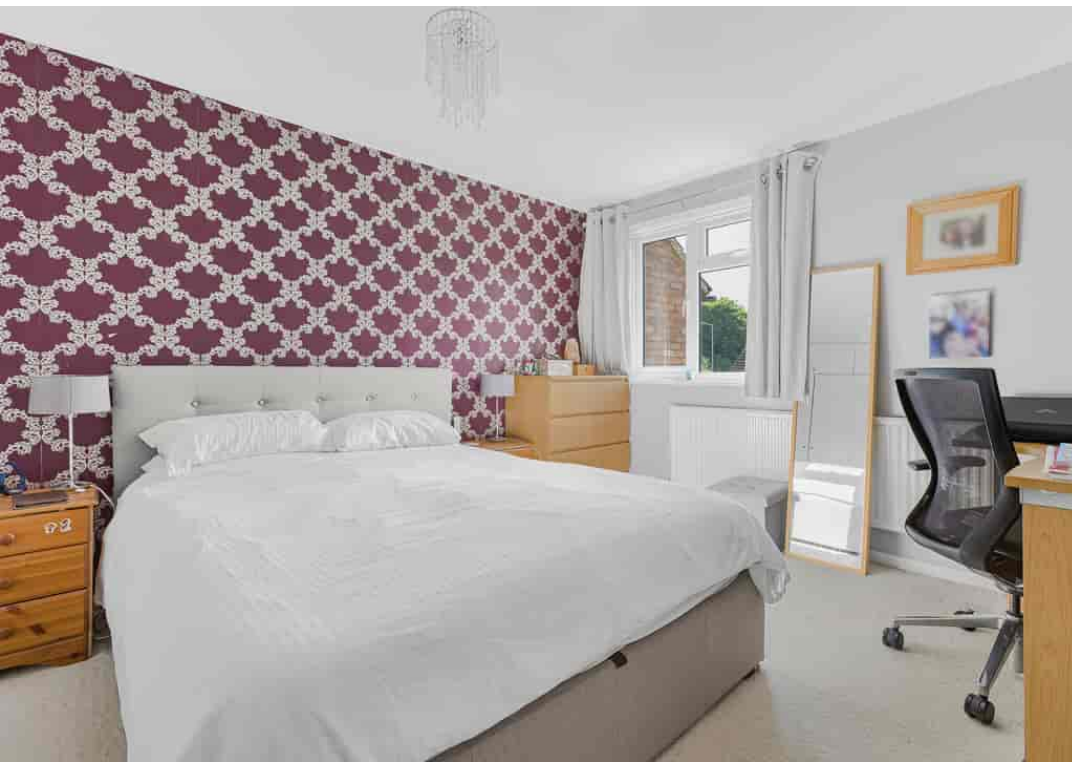


PROPERTY SUMMARY

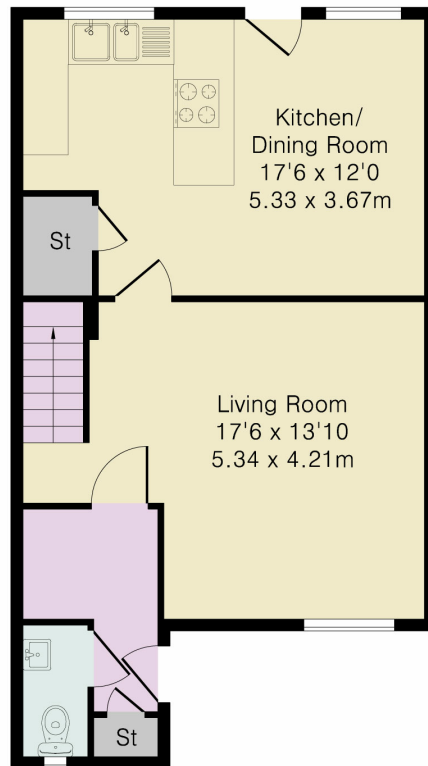
Barrett Move presents a charming three bedroom mid terraced home with off street parking and a garden with rear access on a popular road in the edge of Marlow.

POINTS OF INTEREST

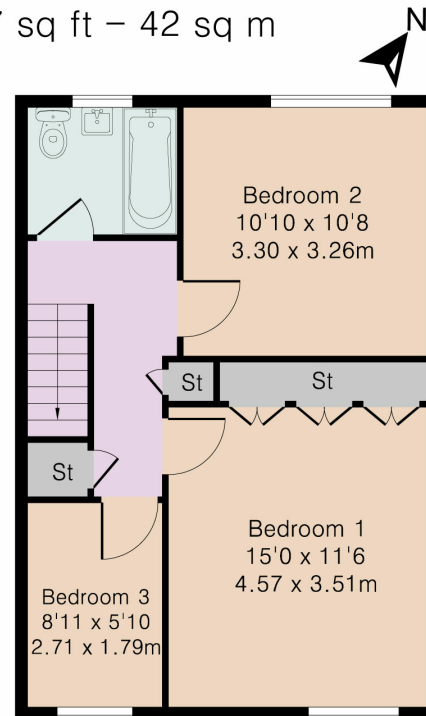
- Large kitchen diner
- spacious living accommodation
- recently fitted boiler
- Rear access
- double glazing
- off street parking
- Three bedroom terraced house
- In catchment for excellent primary and secondary schools
- Ideal for first time buyers and young families
- Onward chain agreed



Approximate Gross Internal Area 949 sq ft – 88 sq m
 Ground Floor Area 492 sq ft – 46 sq m
 First Floor Area 457 sq ft – 42 sq m



Ground Floor



First Floor