



# Bluebell Drive

Seabridge

Newcastle-under-Lyme, ST5 3UD



# OneAgency

01782 970222

[hello@oneagencygroup.co.uk](mailto:hello@oneagencygroup.co.uk)





£485,000

Simply stunning detached residence with large plot and double garage, situated in the highly regarded location of Seabridge. The property has been extensively improved by the present vendor and provides high quality accommodation throughout with a high specification contemporary kitchen with under floor heating which is continued into the conservatory.





#### ENTRANCE PORCH

Door and double glazed window to front, radiator.

#### HALLWAY

Stairs to first floor, radiator, timber flooring, under stairs storage area.

#### DINING ROOM

3.46m x 3.63m (11' 4" x 11' 11") Double glazed window to front, radiator, tiled flooring.

#### LOUNGE

4.49m x 5.55m (14' 9" x 18' 3") Double glazed french doors and window to rear, timber flooring, inset stainless steel feature gas living flame fire, radiator.

#### SNUG

4.29m x 2.85m (14' 1" x 9' 4") Double glazed windows to front, tiled flooring.

#### CLOAKS

Double glazed frosted window to side, W.C., hand wash basin, heated towel rail, tiled flooring, part tiled walls, vertical radiator.

#### BREAKFAST KITCHEN

5.95m x 3.33m (19' 6" x 10' 11") High specification contemporary Alno fitted kitchen with Siemens appliances, induction hob, remote control extractor fan, integral fridge, integral freezer, integral dishwasher, drinks/wine cooler, instant hot water tap, vertical radiator, under floor heating.

#### UTILITY

Plumbing for automatic washing machine, space for dryer, stainless steel sink and drainer unit with mixer tap, fitted storage cupboards, part tiled walls, tiled floor.

#### CONSERVATORY

3.06m x 4.65m (10' 0" x 15' 3") Tiled floor, radiator, under floor heating.

#### FIRST FLOOR

#### LANDING

Access to loft, radiator, double glazed window to front.

#### MASTER BEDROOM

4.10m x 3.48m (13' 5" x 11' 5") Double glazed window to rear, radiator, fitted wardrobes, laminate flooring.

#### EN SUITE BATHROOM

Panelled bath with mains shower over, W.C., hand wash basin with fitted storage, double glazed frosted window, heated towel rail, tiled floor, tiled walls.

#### BEDROOM TWO

3.48m x 3.27m (11' 5" x 10' 9") Double glazed window to front, radiator, laminate flooring, fitted wardrobes.

#### EN SUITE SHOWER ROOM

Shower cubicle with mains shower, W.C., hand wash basin with fitted storage, heated towel rail, tiled walls, tiled flooring.

#### FAMILY BATHROOM

Panelled bath with mains shower over, hand wash basin with fitted storage, W.C., tiled walls, tiled flooring, double glazed frosted window.

#### BEDROOM THREE

3.42m x 3.05m (11' 3" x 10' 0") Laminate flooring, radiator, double glazed window to rear, fitted wardrobes.

#### BEDROOM FOUR

2.40m x 2.82m (7' 10" x 9' 3") Double glazed window to rear, laminate flooring, fitted wardrobes.

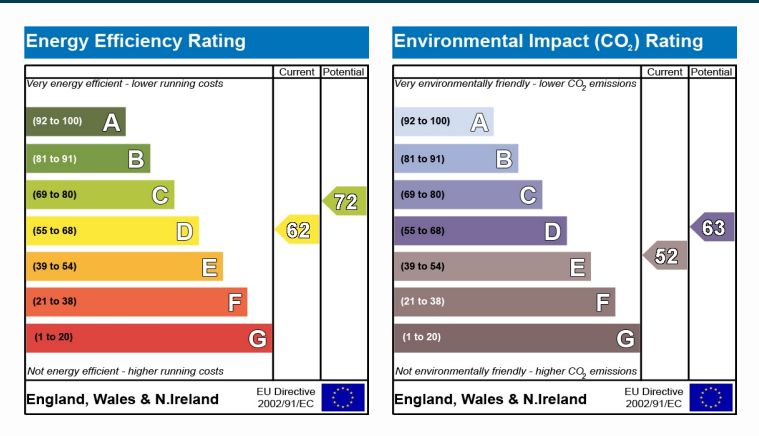
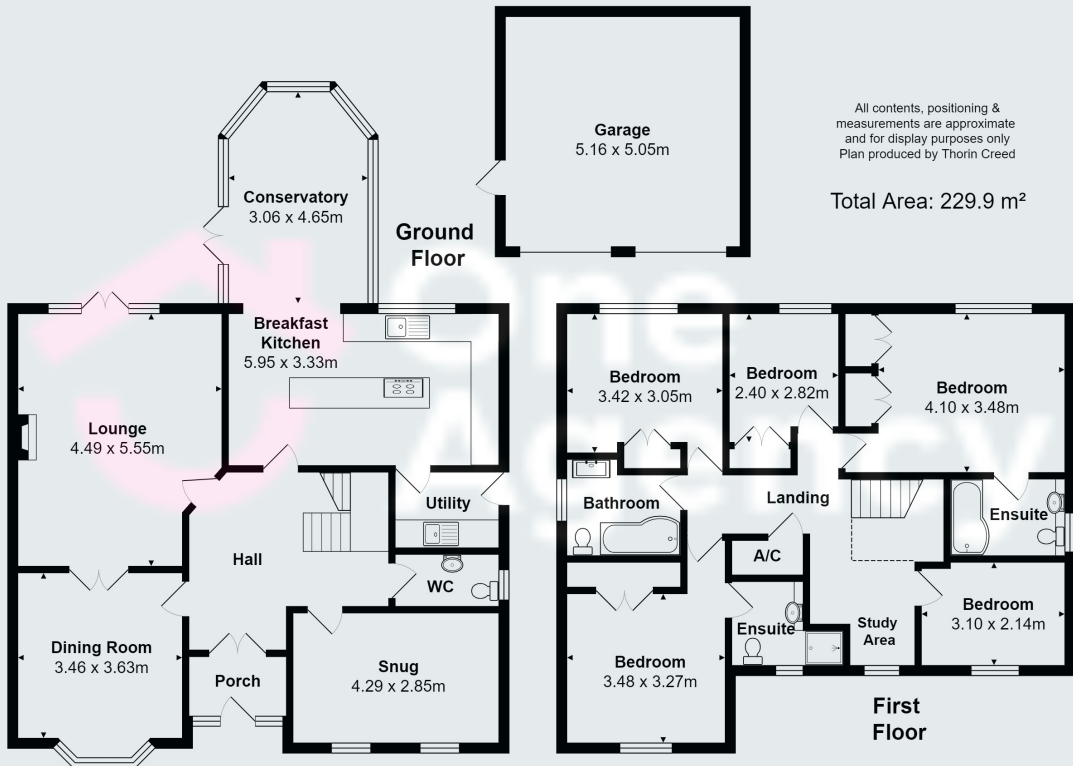
#### BEDROOM FIVE

3.10m x 2.14m (10' 2" x 7' 0") Double glazed window to front, radiator, laminate flooring.

#### OUTSIDE

Large plot with attractive barbecue area and double garage. Driveway providing a substantial off road parking area.





OneAgency, 9 & 10 Ridge House Drive, Festival Park, Stoke-on-Trent, ST1 5SJ

01782 970222

hello@oneagencygroup.co.uk

Every attempt has been made to ensure accuracy, however, all measurements are approximate and for illustrative purposes only. **Not to scale.**

In accordance with The Consumer Protection from Unfair Trading Regulations 2008 the following particulars have been prepared in good faith and they are not intended to constitute part of an offer or contract. We have not carried out a structural survey and the services, appliances and specific fittings have not been tested. All photographs, measurements, floor plans and distances referred to are given as a guide only and should not be relied upon for the purchase of carpets or any other fixtures and fittings. Lease details, service charges and ground rent (where applicable) are given as a guide only and should be checked and confirmed by your Solicitor prior to exchange of contracts.