

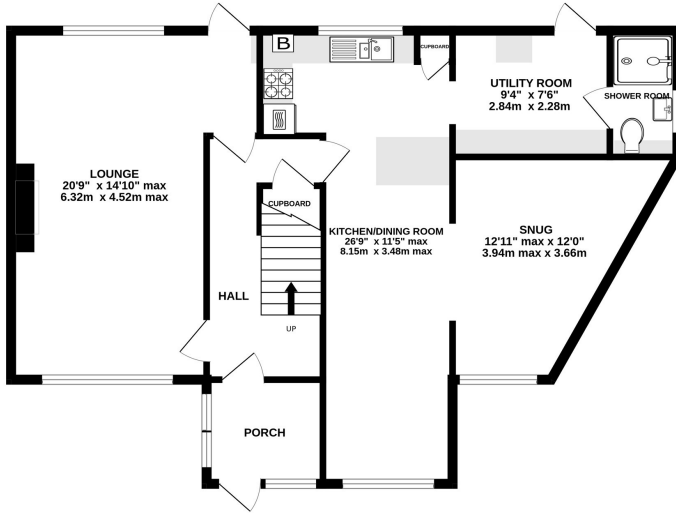
Grant Close, Shepperton, TW17 9AF

£699,950

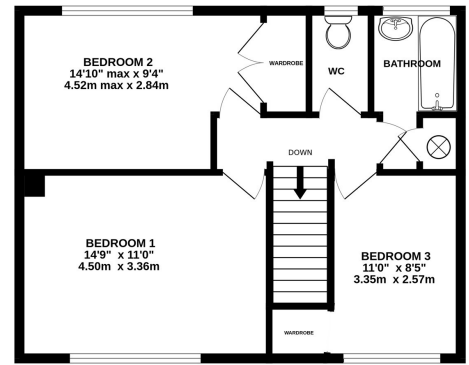


- Three Bedroom Detached Family Home
- Kitchen/Diner and Utility Room
- Family Bathroom And Separate Shower Room
- South West Facing Garden
- Sought After Cul-De-Sac in Village Centre
- Three Double Bedrooms
- Second Lounge/Snug
- Driveway for 3 Cars

GROUND FLOOR
850 sq.ft. (78.9 sq.m.) approx.



1ST FLOOR
536 sq.ft. (49.8 sq.m.) approx.



TOTAL FLOOR AREA: 1386 sq.ft. (128.7 sq.m.) approx.

Whilst every attempt has been made to ensure the accuracy of the floorplan contained here, measurements of doors, windows, rooms and any other items are approximate and no responsibility is taken for any error, omission or mis-statement. This plan is for illustrative purposes only and should be used as such by any prospective purchaser. The services, systems and appliances shown have not been tested and no guarantee as to their operability or efficiency can be given.
Made with Metropix ©2025



Energy Efficiency Rating		
	Current	Potential
Very energy efficient - lower running costs		
(92+) A		
(81-91) B		
(69-80) C	72	80
(55-68) D		
(39-54) E		
(21-38) F		
(1-20) G		
Not energy efficient - higher running costs		
England, Scotland & Wales		
EU Directive 2002/91/EC		

We have not tested the services or domestic appliances so we cannot verify that they are in working order. The buyer is advised to obtain verification from their solicitor or surveyor. These particulars form no part of any offer or contract and their accuracy cannot be guaranteed.