

3 Frome Road, Beckington, BA11 6TD

COOPER
AND
TANNER



OIEO £475,000 Freehold

This delightful cottage offers a cozy yet spacious retreat, centrally located in one of the region's most sought-after villages.

3 Frome Road Beckington, BA11 6TD

 3  2  2 EPC D

OIEO £475,000 Freehold

DESCRIPTION

An attractive village centre house offered with no onward chain. With three double bedrooms, two reception rooms, a low maintenance courtyard garden and a wealth of period features, this property is perfect for both residents and investors.

3 Frome Road is an immaculate home, having been recently refurbished to a very high standard. It offers neutral carpeting throughout, cast iron radiators, designer sanitary ware and modern fixtures and fittings throughout.

You enter the home via a well-lit porch, which leads directly into the comfortable lounge, with dual aspect views and log burning stove, providing ample space for family gatherings. There is also a dining area, with room for a family sized table and chairs, with large niche and under stairs storage. From here you can access the generous, fully-equipped kitchen, with high-end appliances, including a single AGA. There is a small breakfast bar, illuminated by a skylight, and a small WC. There is also a door out to the quaint and sunny courtyard, perfect for entertaining.

On the first floor the master bedroom is currently furnished with a king-sized bed, and has a small built-in cupboard. There is another, more compact double and the family bathroom, with marble tiling, free standing bath and brushed gold brassware.

On the second floor there is a further bedroom in the eaves, with en-suite wet room.

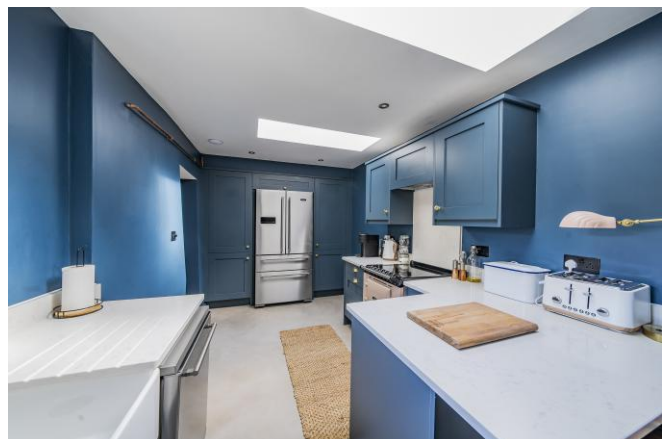
OUTSIDE

Outside there is a south facing raised garden and easy to manage additional courtyard with views out to the village. To the front of the property is a small secure enclosed area that houses the bin and log stores, with plenty of room for bikes. Potential for parking a small car if adapted.

LOCATION

The thriving village of Beckington offers a lively Anglican church, two public houses, tennis, football and cricket clubs, village hall, village school and Springmead private day nursery and prep school. Recreational facilities locally are good with Babington House, Orchardleigh Golf club, fishing, shooting and beautiful open countryside all on the doorstep. The excellent farmers' co-operative, Mole Valley Farmers, where you can purchase a huge selection of goods and the award winning Whiterow Farm Shop, with a first-class butchery, fishmonger, bakery, and delicatessen are both nearby.

The historic market town of Frome is four miles away and features the highest number of listed buildings in Somerset. Longleat House and safari park and its many attractions are nearby. Private schools are to be found in Bath, Bruton, Castle Cary, Cranmore, Glastonbury, Street, Warminster, and Wells.



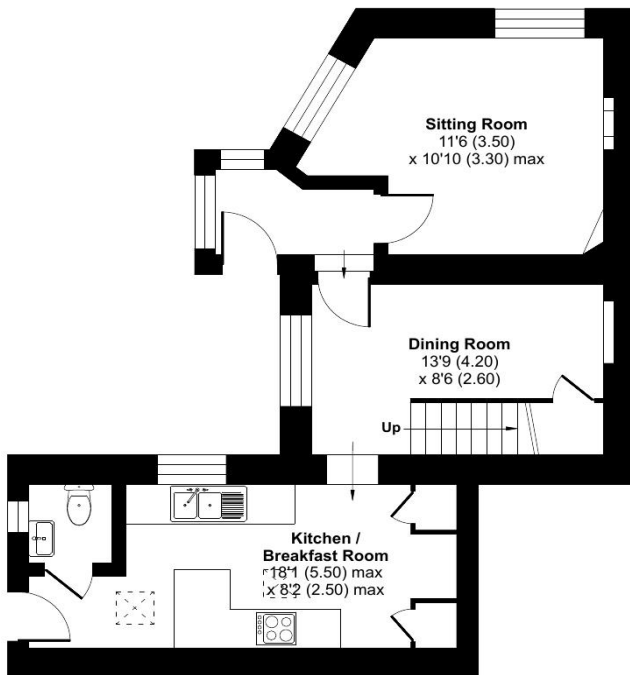




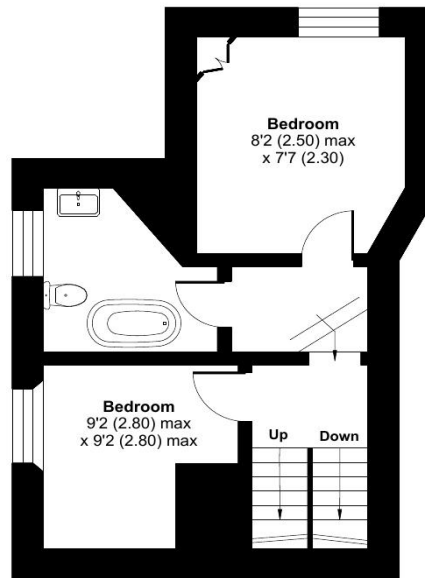
Frome Road, Frome, BA11

Approximate Area = 1019 sq ft / 94.7 sq m

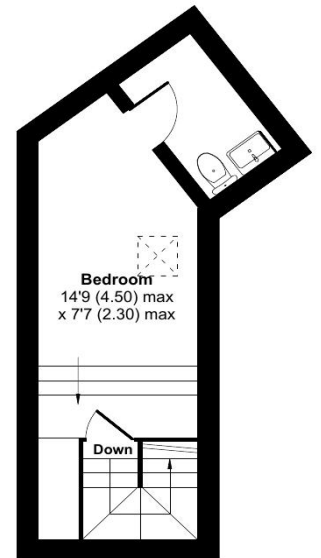
For identification only - Not to scale



GROUND FLOOR



FIRST FLOOR



SECOND FLOOR



Floor plan produced in accordance with RICS Property Measurement Standards incorporating International Property Measurement Standards (IPMS2 Residential). © nitchcom 2024. Produced for Cooper and Tanner. REF: 1190007



FROME OFFICE

Telephone 01373 455060

6 The Bridge, Frome, Somerset, BA11 1AR

frome@cooperandtanner.co.uk

**COOPER
AND
TANNER**

Important Notice: These particulars are set out as a general outline only for the guidance of intended purchasers and do not constitute, nor constitute part of, an offer or contract. All descriptions, dimensions, reference to condition and necessary permissions for use and occupation, warranties and other details are given without responsibility and any intending purchasers should not rely on them as statements or representations of fact but must satisfy themselves by inspection or otherwise as to the correctness of each of them.



RICS



OnTheMarket