



Hillary Court,
Freshfield Road,
Formby, L37 3PS

Offers Over £145,000

SM

STEPHANIE MACNAB
ESTATE AGENT

A SECOND FLOOR self-contained apartment, located within Phase II of this popular development.

The purpose-built 60+ development comprises 86 self-contained apartments that were constructed in two phases during the early 2000s.

There is resident management staff, Careline alarm service, lift, laundry, residents' lounge, kitchen, and guest facilities. We understand cats and dogs are generally accepted (subject to the terms of the lease and landlord permission).

The apartment comprises - entrance hall with storage, lounge/diner with access to the balcony at the rear and kitchen, TWO DOUBLE BEDROOMS, and SHOWER-ROOM.

Immaculate communal gardens and on-site Residents' parking.

The property is being offered with NO ONWARD CHAIN.

Lease term - 125 years from 01/05/2005

Service charge - TBC

Ground rent - TBC

Call to view 01704 516 626

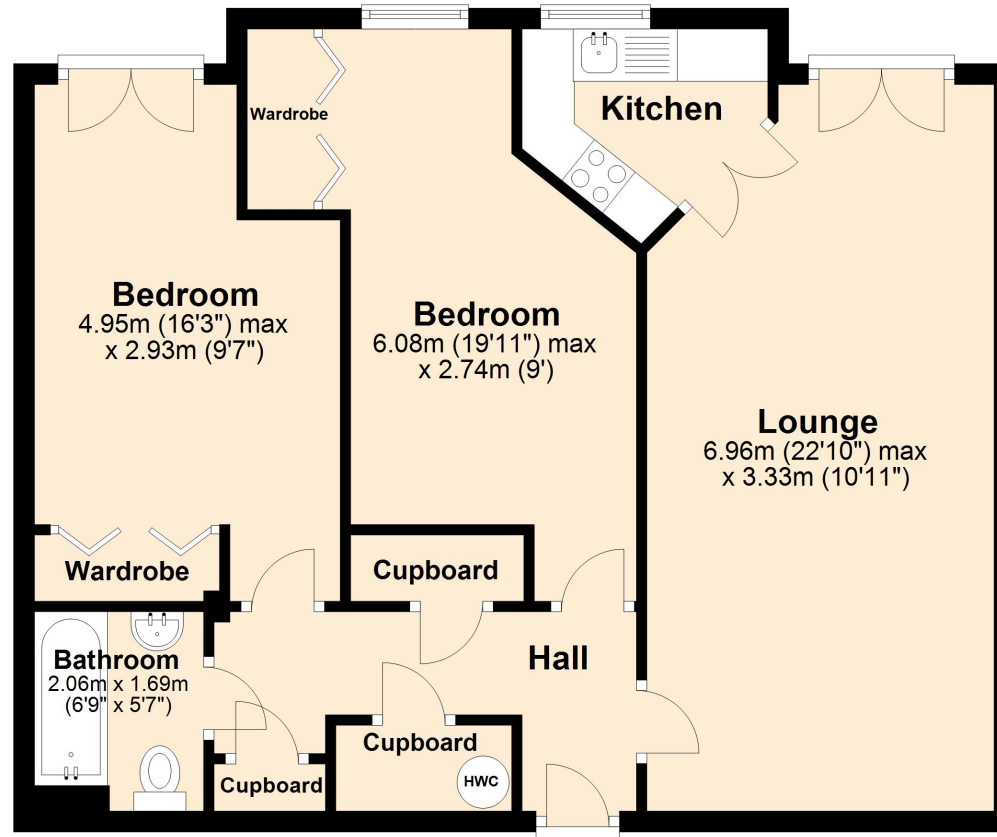
Follow us on Facebook and Instagram.





Ground Floor

Approx. 66.8 sq. metres (719.0 sq. feet)



Total area: approx. 66.8 sq. metres (719.0 sq. feet)

Plan produced using PlanUp.

