



 **DERBYSHIRE
PROPERTIES**
— SALES & LETTINGS —



Lodge Drive, Belper, Derbyshire DE56 2TP
£450,000 - £475,000 £450,000 - Freehold

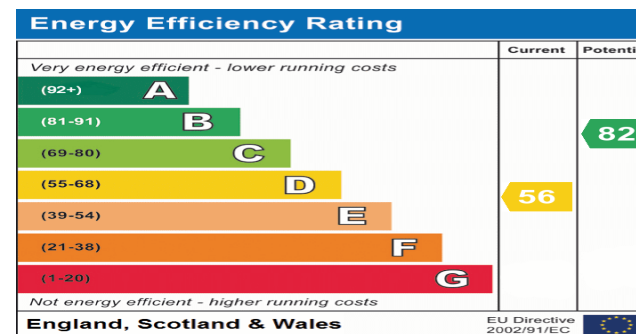


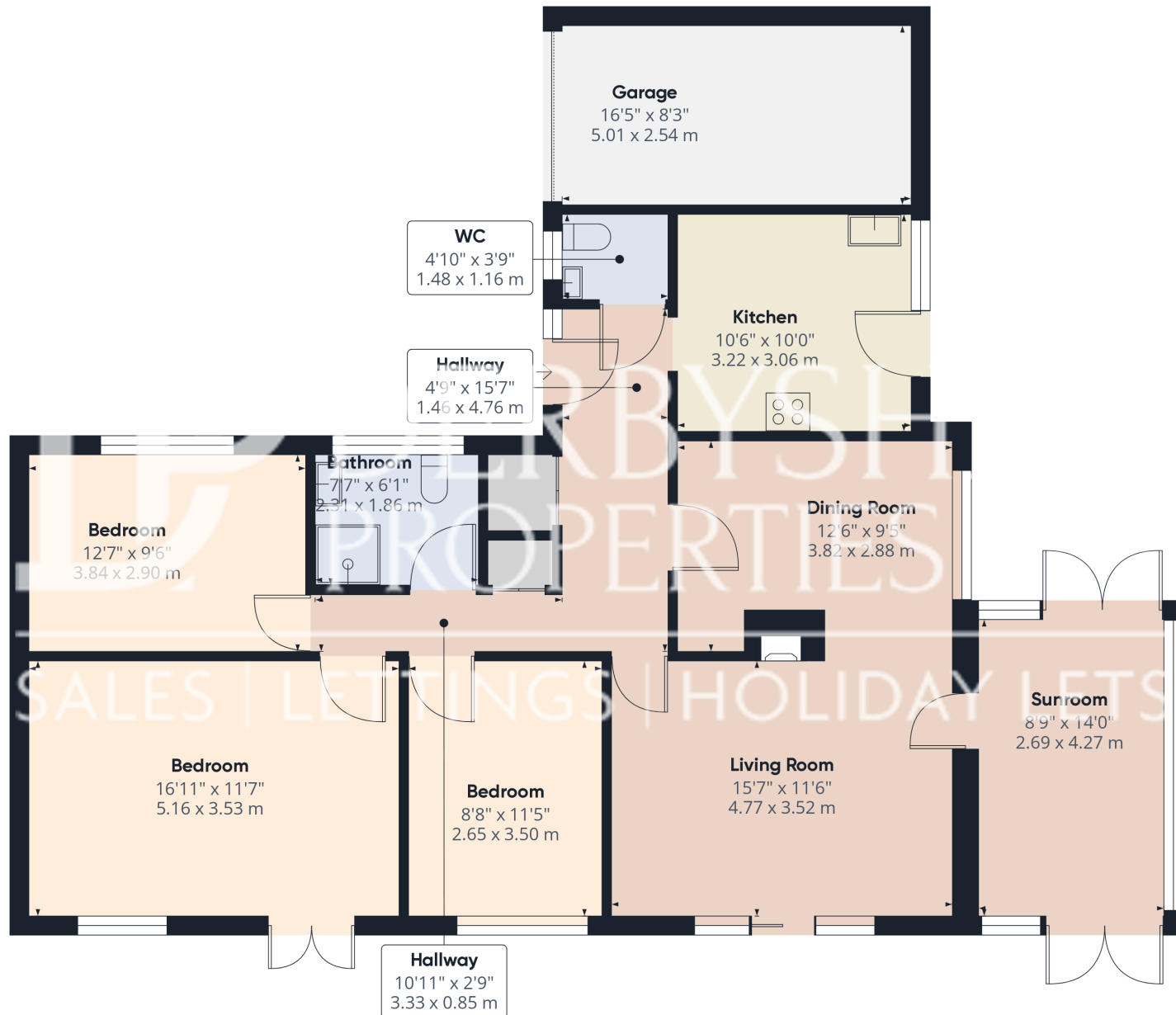
PROPERTY DESCRIPTION

GUIDE PRICE £450,000-£475,000 Derbyshire Properties are delighted to present this well proportioned detached family bungalow located in a highly sought-after and regarded area. The property benefits from an elevated position offering stunning views across Belper. The location is in walking distance of Belper town centre with all its amenities on offer, beautiful countryside and useful road links including the A6 and A38. The property should be considered not just a downsize but also potential for families and we recommend an early internal inspection to avoid disappointment.

POINTS OF INTEREST

- ***GUIDE PRICE £450,000-£475,000***
- Large Detached Family Bungalow
- Sought After Premium Location
- 3 Double Bedrooms
- Open Plan Lounge/Diner
- Sun Room
- Elevated Location With Stunning Views
- Private Plot With Enclosed Garden & Ample Parking
- Garage
- Large Living Spaces
- COUNCIL TAX BAND D





Approximate total area⁽¹⁾

1296.62 ft²
120.46 m²

(1) Excluding balconies and terraces

While every attempt has been made to ensure accuracy, all measurements are approximate, not to scale. This floor plan is for illustrative purposes only.

GIRAFFE360