



Le Sycomore

10 Maison des Arbes | Les Hubits de Haut | St Martins | GY4 6LU

This spacious top floor apartment is located in a highly desirable area in the lanes of St Martin, on the edge of St Peter Port but with the village amenities also a short walk away. The property is presented in move-in condition but would also allow for some modernisation. Accommodation comprises a large lounge/kitchen/diner, two double bedrooms and a bathroom. Le Sycomore benefits from a personal shed/workshop and two parking spaces. There is also access to the communal patio space with a picnic table. This is an ideal option for both first time buyers and those looking for a buy-to-let.

2 BEDROOMS

1 BATHROOM

1 RECEPTION

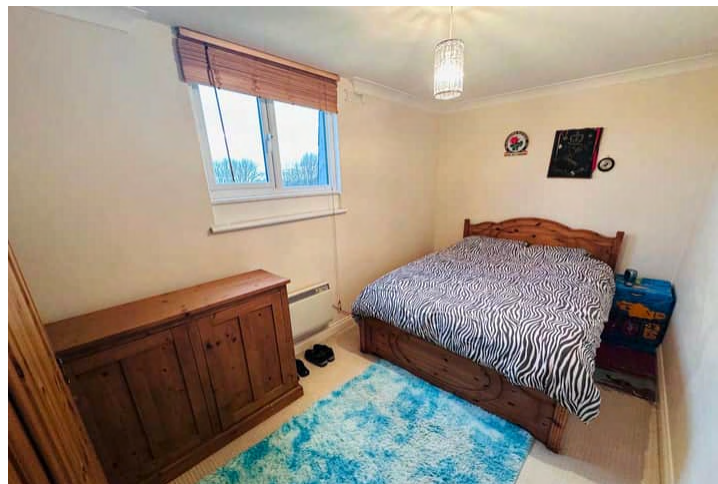
£397,500

ESTATE AGENTS & PROPERTY MANAGERS

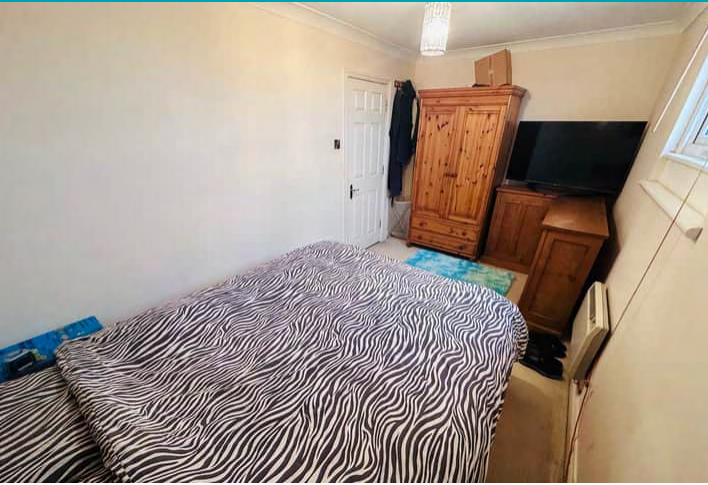
Shields
& Rutland

OPENING DOORS SINCE 1993

PHOTOS



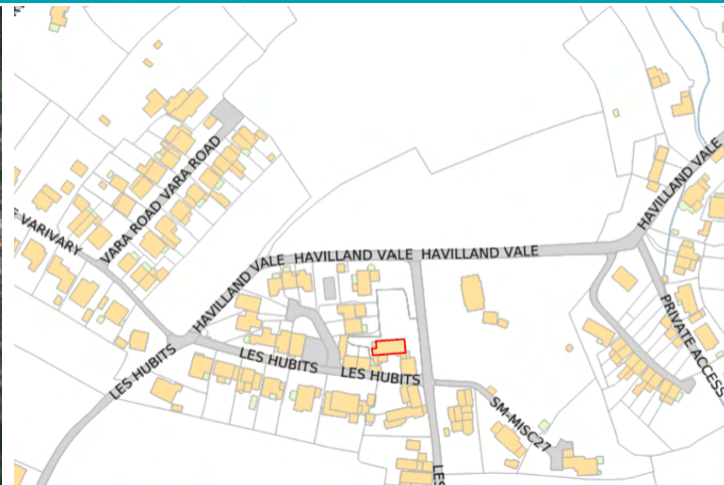
PHOTOS



PHOTOS



SPECIFICATIONS



Entrance Hall

3.94m x 0.88m (12' 11" x 2' 11")

Lounge/Kitchen/Diner

6.05m x 5.64m (19' 10" x 18' 6")

Bedroom 1

4.45m x 2.48m (14' 7" x 8' 2")

Bedroom 2

4.28m x 2.43m (14' 1" x 8' 0")

Bathroom

2.50m x 2.42m (8' 2" x 7' 11")

Garden

The property benefits from a personal shed/workshop and also access to the communal patio space with a picnic table.

Parking

There are two allocated parking spaces.

PRICE INCLUDES

Curtains, carpets and light fittings

SPECIAL FEATURES

- Light and spacious accommodation
- Communal patio
- Quiet location
- Two allocated spaces

SERVICES

Mains water, electricity and drainage. Electric night storage heaters.

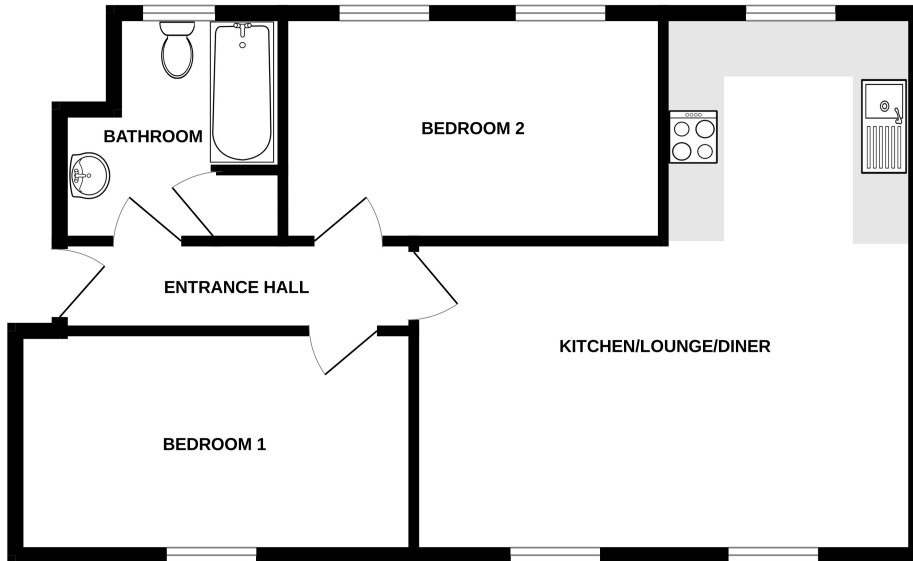
APPLIANCES INCLUDED

- Indesit washing machine
- Neff oven
- Four ring hob
- Extractor fan
- Integrated fridge/freezer

SCHOOL CATCHMENT

St Martins Primary School and Les Beaucamps High School

TOP FLOOR



LE SYCOMORE, 10 MAISON DES ARBES

Whilst every attempt has been made to ensure the accuracy of the floorplan contained here, measurements of doors, windows, rooms and any other items are approximate and no responsibility is taken for any error, omission or mis-statement. This plan is for illustrative purposes only and should be used as such by any prospective purchaser. The services, systems and appliances shown have not been tested and no guarantee as to their operability or efficiency can be given.
Made with Metropix ©2024