

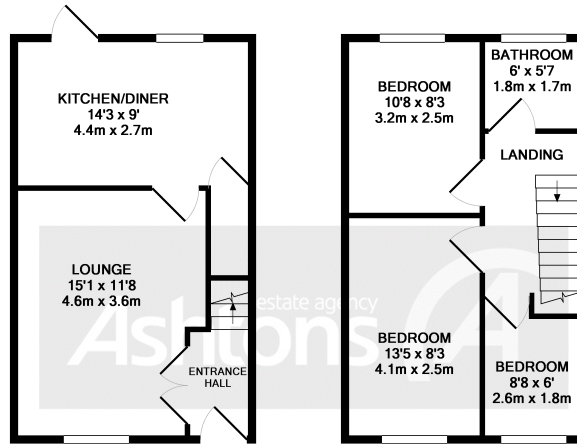
Winchester Avenue, Great Sankey, £190,000



Welcome to the heart of Great Sankey, where an exquisite three-bedroom mid-terrace property awaits you. Nestled away from the bustling road, this charming home offers a tranquil retreat from the daily hustle and bustle. Don't miss the opportunity to make this delightful three-bedroom mid-terrace your new home. Contact us today to arrange a viewing

 x 3  x 1





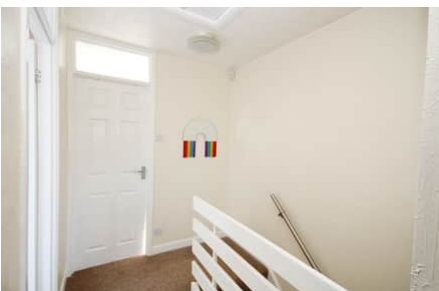
GROUND FLOOR
APPROX. FLOOR
AREA 343 SQ.FT.
(31.9 SQ.M.)

1ST FLOOR
APPROX. FLOOR
AREA 343 SQ.FT.
(31.9 SQ.M.)

TOTAL APPROX. FLOOR AREA 686 SQ.FT. (63.8 SQ.M.)

Whilst every attempt has been made to ensure the accuracy of the floor plan contained here, measurements of doors, windows, rooms and any other items are approximate and no responsibility is taken for any error, omission, or mis-statement. This plan is for illustrative purposes only and should be used as such by any prospective purchaser. The services, systems and appliances shown have not been tested and no guarantee as to their operability or efficiency can be given.
Made with Metropix ©2018

Welcome to the heart of Great Sankey, where an exquisite three-bedroom mid-terrace property awaits you. Nestled away from the bustling road, this charming home offers a tranquil retreat from the daily hustle and bustle. As you step inside, you'll be greeted by a warm and inviting atmosphere that permeates throughout the entire residence. The carefully designed layout maximizes both space and functionality, creating an ideal environment for comfortable living. The well-appointed kitchen is a chef's delight, boasting modern appliances, ample storage, and sleek countertops that inspire culinary creativity. Upstairs, you'll find three generously sized bedrooms, each offering a peaceful sanctuary for relaxation and privacy. Outside, the property delights with a rear garage, ensuring secure parking and additional storage options. The outdoor space has been thoughtfully designed, providing a charming setting for al fresco dining or simply unwinding.



www.ashtons.net



Fixtures and fittings: A list of the fitted carpets, curtains, light fittings and other items fixed to the property which are included in the sale (or may be available by separate negotiation) will be provided by the Seller's Solicitors. **Important Notice:** 1. Particulars: These particulars are not an offer or contract, nor part of one. You should not rely on statements by Ashtons in the particulars or by word of mouth or in writing ("information") as being factually accurate about the property, its condition or its value. Neither Ashtons nor any joint agent has any authority to make any representations about the property, and accordingly any information given is entirely without responsibility on the part of the agents, seller(s) or lessor(s). 2. Photos, Videos etc: The photographs, property videos and virtual viewings etc. show only certain parts of the property as they appeared at the time they were taken. Areas, measurements and distances given are approximate only. 3. Regulations etc: Any reference to alterations to, or use of, any part of the property does not mean that any necessary planning, building regulations or other consent has been obtained. A buyer or lessee must find out by inspection or in other ways that these matters have been properly dealt with and that all information is correct. 4. To find out how we process Personal Data, please refer to our Group Privacy Statement and other notices at <https://www.ashtons.net/privacy-policy/>