

*Silverdale Avenue*  
OXSHOTT



**Hawksman**

18 SILVERDALE AVENUE  
OXSHOTT  
SURREY  
KT22 0LB

4 Double Bedrooms - 1 ensuite  
4 Reception Rooms | Kitchen/Breakfast  
Room | Utility Area | Original Features  
Scope to Update and Improve  
Freestanding Work/Hobby Room  
Lovely Garden and Patio | Quiet Cul de Sac  
Location | Walking Distance to Oxshott  
village, rail station, Royal Kent and Danes Hill  
Schools

HAWKSMAN.COM  
01372 237800  
OXSHOTT@HAWKSMAN.COM











KITCHEN/FAMILY ROOM

27'8" X 18'9"















DINING/FAMILY ROOM











PRINCIPAL BEDROOM SUITE

16'6" X 15'3"





BEDROOM

14'5" X 10'0"





BEDROOM

12'3" X 11'7"



EN SUITE SHOWER ROOM













# Charlwood Drive

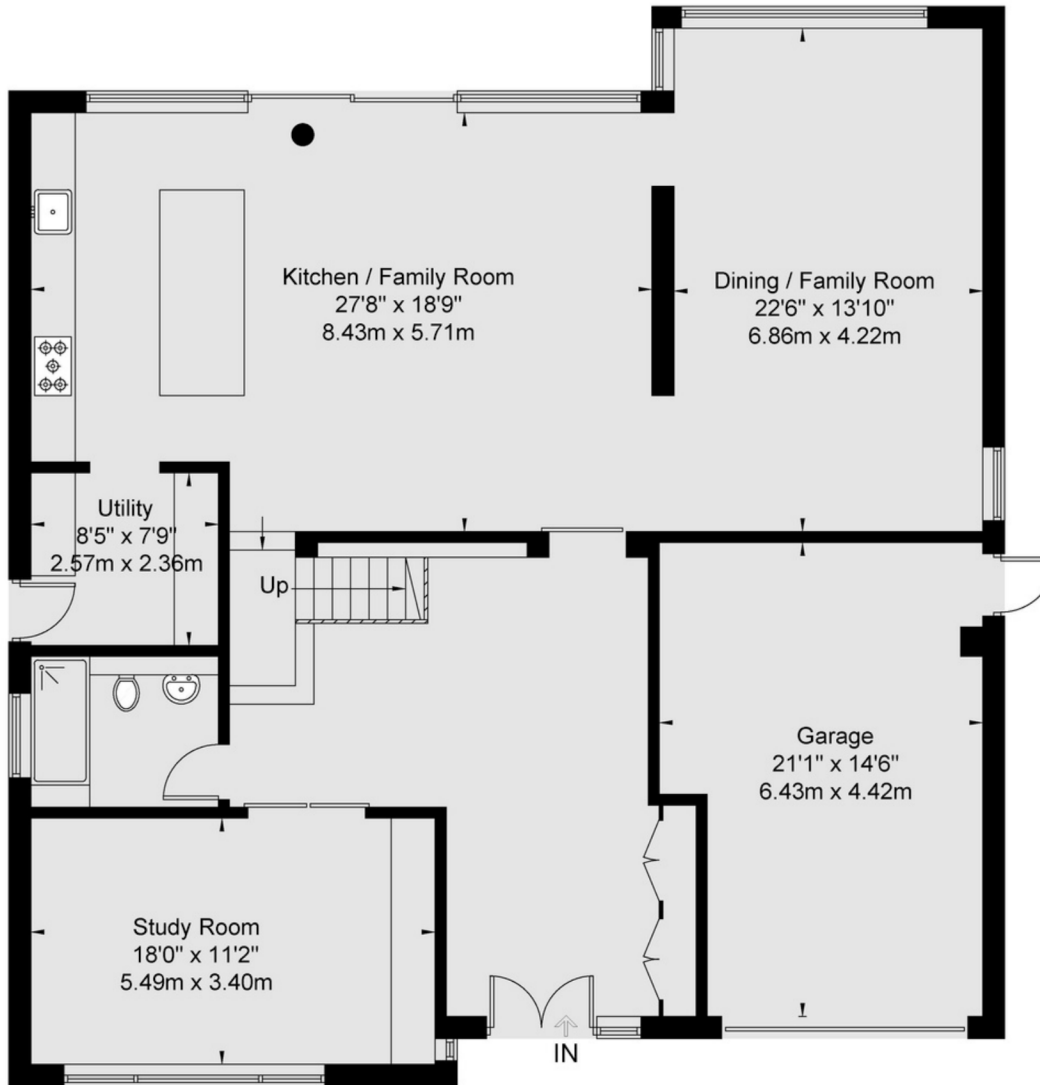
Approx Gross Internal Area

Ground Floor = 139.5 Sq m 1501 Sq Ft

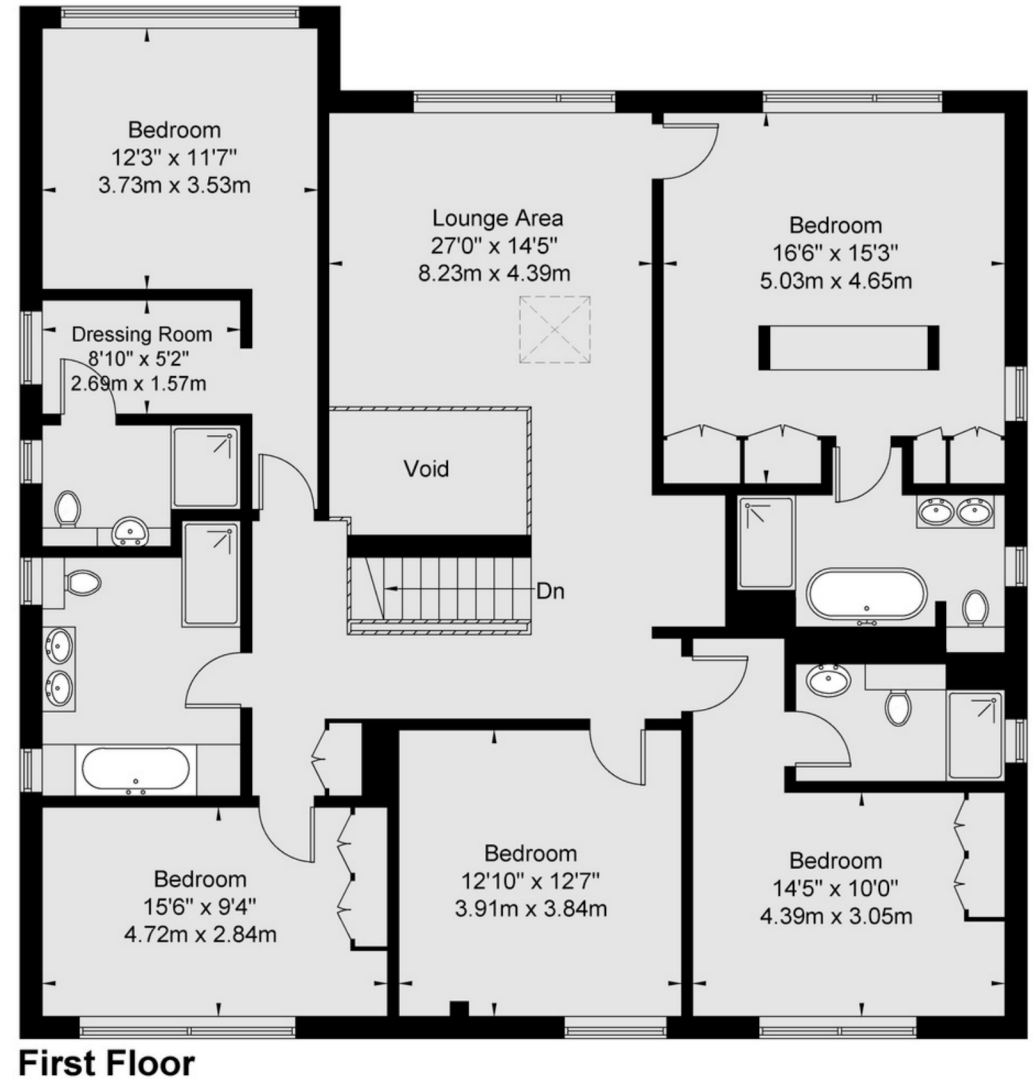
First Floor = 165.4 Sq m 1780 Sq Ft

Garage = 26.4 Sq m 284 Sq Ft

Total = 331.3 Sq m / 3565 Sq Ft



Ground Floor



First Floor

Viewmedia @ 2023  
Viewmedia.co.uk

Whilst every attempt has been made to ensure the accuracy of this floor plan, measurements of doors, windows and rooms are approximate and no responsibility is taken for any error or omission. This illustration is for identification purpose only. Measured and drawn accordance with RICS guidelines. Not drawn to scale, unless stated. Dimensions shown are to the nearest 3" and are to the points indicated by the arrow heads.