



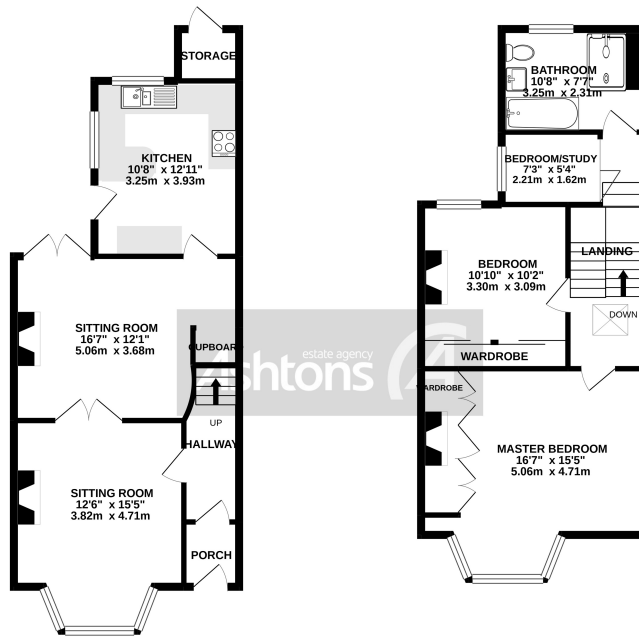
North Road, St Helens. Offers in Excess of £150,000

Two Bedroom Terrace House | Double Glazing - Central Heating | Ideal For First Time Buyer & Families | Walking Distance To Town Center | Popular Park Around The Corner | Sought After & Desirable Area |



GROUND FLOOR
567 sq.ft. (52.7 sq.m.) approx.

1ST FLOOR
545 sq.ft. (50.7 sq.m.) approx.



TOTAL FLOOR AREA: 1112 sq.ft. (103.4 sq.m.) approx.
 While every attempt has been made to ensure the accuracy of the floorplans contained herein, measurements of doors, windows, rooms and any other items are approximate and no responsibility is taken for any error, omission or mis-statement. This plan is for illustrative purposes only and should be used as such by any prospective purchaser. The services, appliances and fixtures shown have not been checked and no guarantee as to their operability or efficiency can be given.
 Made with Metaphor ©2012

A balance between modern and contemporary with this character period property. Situated in a great spot within walking distance to the town center, easy access to the East Lancs plus schools, and parks around.

These period terrace properties offer a tremendous amount of space and come with a versatile layout. This property was originally a three-bedroom but has undergone some alteration to enhance the bathroom space. We feel it could be converted back should you need extra space.



Contact your local office to arrange a viewing:

- Padgate: 01925 479334
- Great Sankey: 01925 454300
- Winwick: 01925 232146
- Stockton Heath: 01925 453400
- St.Helens: 01744 754120
- Wigan: 01942 498862
- Culcheth: 01925 764744
- Ashton-In-Makerfield: 01942 364446
- Newton-Le-Willows: 01925 907770
- Commercial Office: 01925 907709
- Lettings Head Office: 01925 873533
- Financial Services: 01925 221234

Viewing Arrangements

Viewing is strictly by appointment only through Ashtons Estate Agency.

Disclaimer Property Details

These particulars, whilst being believed to be accurate are set out as a general outline only for guidance and do not constitute any part of an offer or contract. Intending purchasers should not rely on them as statements of representation of fact, but must satisfy themselves by inspection or otherwise as to their accuracy. We have not carried out a detailed survey nor tested the services, appliances and specific furnishings. The measurements given are approximate. No person in this firm's employment has the authority to make or give any representation or warranty in respect of the property.

All details, photographs and floorplans are the copyright of Ashtons Estate Agency.



How much you can borrow?
 Speak to a mortgage expert in your local office.

Ashtons Financial Services